

214 Discovery Camps

To Register online: ce.d214.org | phone: 847-718-7700

Summer 2019

This activity is not sponsored by Community Consolidated School District 59, any of its schools, or groups officially associated with the District.

District 214 Community Education is thrilled to offer **214 Discovery Camps** for the first time. Starting June 10 to August 1, we are offering a robust variety of camps to choose from, including STEM (Science Technology Engineering and Math) classes, languages, performing arts and personal enrichment classes.

Kids can enjoy full or half day camps Monday through Thursday to keep them active and engaged. Learn Italian or Spanish, discover how bugs transform and how they protect themselves from enemies, create a cloud in a bottle, launch a rocket, be a “grossologist” and study stinky, slimy and oozy stuff, and so much more!

Camps include:

- **STEM Camps**
 - Explorations in Manufacturing Engineering
 - **Camp 214**
 - Arts & Crafts | Group Game | Fun with Food Challenges
 - **Performing Arts**
 - Teen Beech Musical
 - **World Language**
 - Spanish | Italian
- and so much more!*



Languages

World Language Italian Camp Ages 6-12 years
 Take a virtual trip through Italy with our first-ever D214 World Language Italian Camp. Stops on our trip will include Rome, Venice and Verona. Campers will learn basic speaking phrases and vocabulary, and be introduced to the culture, regions and foods through fun activities, art, music and games.
 (Stella Weber)

Forest View Educational Center-C201, Door TBD
1560 | 6/17-6/27 | Mon-Thurs | 9 am-12 pm

World Language Spanish Camp Ages 6-12 years
 Take a virtual trip through Latin Countries with our first-ever D214 World Language Spanish Camp. Stops on our trip will include Spain, Mexico and South America. Campers will learn basic speaking phrases and vocabulary. They will be introduced to the culture, regions and foods through fun activities, art, music and games.

Forest View Educational Center-C201, Door TBD
1561 | 7/8-7/18 | Mon-Thurs | 9 am-12 pm

Number of camper(s) | Price

1 | \$399.00 2 | \$319.20 3 | \$279.30
4 | \$239.40 5 | \$199.50

Camp Cancellation Procedures

We don't like to cancel programs, but each one must meet its minimum enrollment in order to run. Camp cancellations due to insufficient registration will be made two-weeks before the scheduled start date. Community Education reserves the right to cancel a camp for which there is insufficient registration or for any reasonable cause or circumstances beyond our control. If a program is canceled, registrants will be contacted immediately and a full refund will be issued.

Camp Refund/Withdrawal Policy

If you wish to withdraw your child from a camp program, notification must be in writing. Your written request to cancel registration may be emailed to ceoperations@d214.org or mailed to Forest View Educational Center C/o Community Education, 2121 S. Goebbert Rd., Arlington Heights, IL 60005.

Performing Arts

Teen Beech Musical: Dance, Sing, Act, and Perform on Stage

Grades 2-6
 Join the Children's Theatre Co. for a fun-filled musical theatre camp culminating in our final show, Teen Beech Musical. This camp provides children an opportunity to explore a wide variety of performing arts in an environment of encouragement and support. Boost your camper's confidence with activities including improv, vocal and dance workshops. Go behind the scenes and discover the world of art and set design, costuming and stage makeup. Students will learn the basics of vocal technique, choreography and acting while working together to produce a performance for family and friends.

Performance is July 18.
 (Margo Proeh, Gabrielle Garza, and Children's Theatre Co.)
 Forest View Educational Center-C112, Door 2
1562 | 7/8-7/18 | Mon-Thurs | 10 am-3 pm | \$399

Refunds will be granted on the following basis once written notification is received:

- Up to 15 calendar days prior to the first day of camp, camp fees less a \$25 cancellation fee per camper per session will be refunded.
- 14 calendar days or less prior to the first day of camp, no refunds will be given except in the case of doctor documented injury or illness.
- 214 Discovery Camp \$40 registration fee is not refundable.
- No refunds or prorating of sessions will be issued for days missed throughout a session. Refunds are not issued to campers dismissed for disciplinary issues.



Discover. Create. Learn. Have fun!

Camp 214 Ages 4-12 years

Each day of camp will be a new and exciting experience for our campers, as no two days are exactly alike! Our days begin with Hello Camp—where, through an assortment of organized activities, campers and staff get to know each other, review the day’s schedule and sing our special camp song. We’ll end our days with Goodbye Camp, a time for wrap-up activities and reflections, SMILE Bands and snacks. The bulk of camp will be spent participating in a wide variety of activities throughout the day that may include arts and crafts, group games and teambuilding activities, fun with foods challenges, super science projects, STEM challenges, sports and recreation, and much more! Nonrefundable \$40 registration fee per camper; includes two t-shirts. 10% Sibling discount available. Before care 8:30-9 am and after care 3:30-5 pm available. Camps are Monday-Thursday. Register Online. Forest View Educational Center-kecamps.com or call 877-671-2267

FULL DAY: 9 am-3:30 pm | FEE: \$315 or

HALF DAY: 9 am-12:30 pm | FEE: \$199

1170 | Start Day Options for both Full and Half Days:

6/17-6/20 | 6/24-6/27 | 7/8-7/11 | 7/15-7/18 |

7/22-7/25 | 7/29-8/1

STEM | Wheeling STEM Camp

Explorations In Manufacturing Engineering Ages 12-16

This course allows campers to explore the “makerspace” world of engineering, a place where students can gather to create, invent, tinker, explore and discover using a variety of tools and materials. You will be introduced to CNC (Computer Numerical Control) machines, laser cutters, and hands-on equipment to create a variety of projects. Activities will focus on providing a foundation for our Next Generation Engineers (NGE), designing for manufacturing and essential skills and principals necessary for taking your ideas from concept to design and fabrication. (Wheeling High School, Nuts, Bolts and Thingamajigs Manufacturing Camp)

Scholarships available for qualifying students.

Students living in Wheeling High School sender elementary districts and demonstrating financial need may qualify, and are eligible to apply for a scholarship to cover tuition costs. Scholarships are limited. If applying for a scholarship, please contact us as soon as possible at ceoperations@d214.org or 847-718-7700.

WHS-TBD, Door TBD

1415 | 6/10-6/13 | Mon-Thurs | 10:45 am-4:15 pm | \$199

1416 | 6/17-6/20 | Mon-Thurs | 10:45 am-4:15 pm | \$199

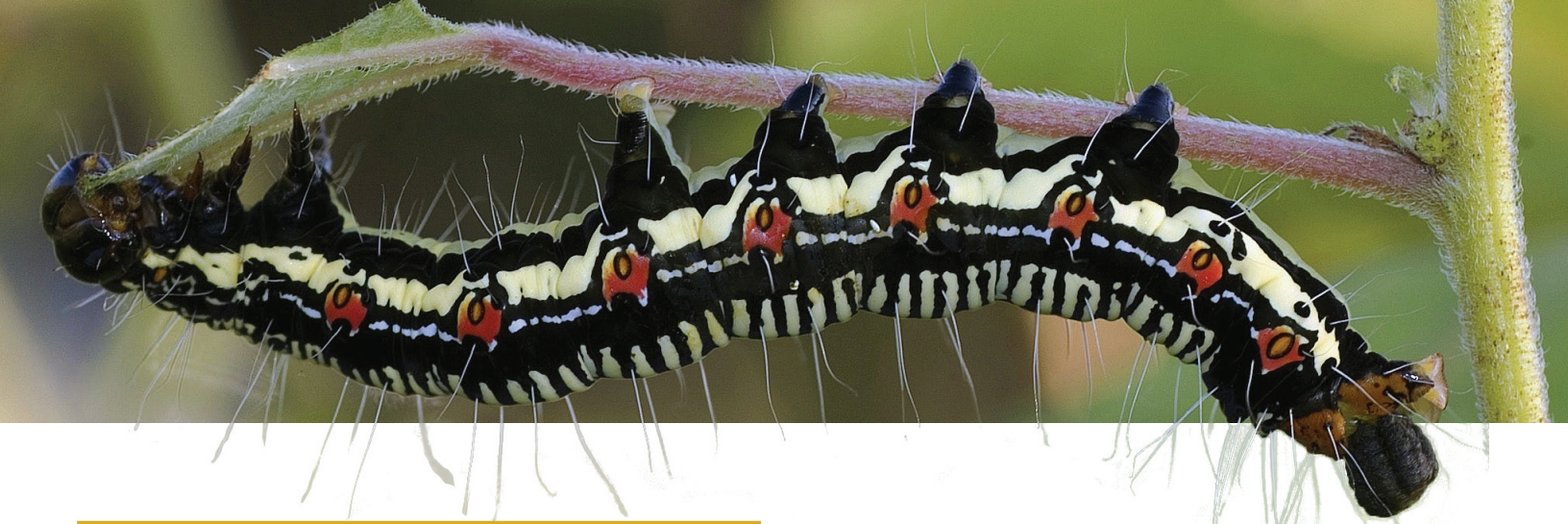
Wheeling STEM Camp Grades 1-8

We are very excited to welcome you to experience the fun and excitement of math, science, technology and engineering this summer. Our staff has planned a variety of hands-on, fun experiences in all areas of Science, Technology, Engineering and Math. We embrace the concept of STEM FOR ALL! Camps are open to the community.

Scholarships available for qualifying students.

Students living in Wheeling High School sender elementary districts and demonstrating financial need may qualify, and are eligible to apply for a scholarship to cover tuition costs. Scholarships are limited. If applying for a scholarship, please contact us as soon as possible at ceoperations@d214.org or 847-718-7700.





Grades 1-2 | Wheeling STEM Camp

A Bug's Life

Do you enjoy playing with bugs? Would you like to learn more about them? You will meet an insect or arachnid each day and learn what it eats, how it transforms, and how it protects itself from enemies. It will be a buggy afternoon.

What's My Shape?

Are you intrigued by the shapes around us and their properties? Students will learn about shapes by building models using food, finding perimeters of different types of crackers, going on a treasure hunt and playing games.

Wheeling High School, Door 29

1563 | 6/10-6/13 | Mon-Thurs | 1-4:15 pm | \$199

1563A | 6/17-6/20 | Mon-Thurs | 1-4:15 pm | \$199

Do Worms Like Snow in April?

Is it snowing in April? What is happening to our climate? Is there anything that I can do to help? Students will learn about climate change, causes of global warming, benefits of recycling, and how they can help to keep our Earth green! Students will make a mini-composting bin complete with organic materials and worms! Please bring in an empty plastic 1-gallon container on the first day of class.

Healthy Snacks

Children will actively become a part of preparing healthy snacks by participating in various activities and becoming familiar with MyPlate.

Wheeling High School, Door 29

1568 | 6/10-6/13 | Mon-Thurs | 1-4:15 pm | \$199

1568A | 6/17-6/20 | Mon-Thurs | 1-4:15 pm | \$199

You Can't Taste a Pickle With Your Ear!

Can you taste a pickle with your ear? Of course not! But if you are reading this, you are seeing the words, feeling the book, and hearing whatever is going on around you. If you happen to be chewing gum, you are tasting, and if someone is wearing perfume, you are smelling too! You will enjoy this intro to the five senses with your eyes, fingers, ears, nose and mouth!

Fun With Fluids

Fluids are liquids and gases making them perfect for all kinds of activities! Investigate bubbles and use them to make fluffy treats. Get a little messy making a strange liquid that sometimes acts like a solid. Start a chemical reaction, create a cloud in a bottle, launch a rocket and much more in this hands-on class.

Wheeling High School, Door 29

1566 | 6/10-6/13 | Mon-Thurs | 1-4:15 pm | \$199

1566A | 6/17-6/20 | Mon-Thurs | 1-4:15 pm | \$199

Grades 1-3 | Wheeling STEM Camp

Busy Builders! An Introduction to Engineering

Plan your designs and then make your own unique buildings and structures! You will have to use problem solving skills to determine your own materials, size, and shape. Will marshmallows or gumdrops make a taller toothpick tower? What materials work best in the water?

Pockets

Have fun with Math! Pockets will bring Math to life. Pockets is an interactive program in which students create, count, add, and work with pockets. Using technology, students will learn how to create and analyze different graphs.

Wheeling High School, Door 29

1567 | 6/10-6/13 | Mon-Thurs | 1-4:15 pm | \$199

1567A | 6/17-6/20 | Mon-Thurs | 1-4:15 pm | \$199



Grades 1-4 | Wheeling STEM Camp

Spa Science

Science from the salon. Learn about different science concepts and how they apply to spa activities, like body scrubs, spa snacks...and end the week with a SPArty!

FUN-TECH Coding 1

Did you ever wonder how a game like NBA mobile or Minecraft was created? It is all based on knowing how to talk to your device in a language called code. This class will explore the basics of coding at different levels. You will have a chance to learn through online coding games along with hands on activities. Wheeling High School, Door 29

1569 | 6/10-6/13 | Mon-Thurs | 1-4:15 pm | \$199

1569A | 6/17-6/20 | Mon-Thurs | 1-4:15 pm | \$199



Grades 3-5 | Wheeling STEM Camp

Nanotechnology 1

Nanotechnology is the study of really small things! In this class, you'll be doing experiments to see how things work differently at the nano scale. Can you walk on water? Of course not, but some insects can! How is that possible? We'll find out in class!

FUN-TECH Coding 2

Did you ever wonder how a game like NBA mobile or Minecraft was created? It is all based on knowing how to talk to your device in a language called code. This class will explore the basics of coding at different levels. You will have a chance to learn through online coding games along with hands on activities.

Wheeling High School, Door 29

1575 | 6/10-6/13 | Mon-Thurs | 1-4:15 pm | \$199

1575A | 6/17-6/20 | Mon-Thurs | 1-4:15 pm | \$199

Eat Your Math

Are you interested in working in the kitchen? Do you love to experiment with food and try your results? You'll be able to work with recipes and learn to use your math skills to make recipes for bigger and smaller groups. You will be making food during your time—and you'll get to eat it!

Chart The Heart

Learn how exercise affects our heart rate, from vigorous to peaceful yoga. Learn about the science of the heart and the relationship of physical activity to your heart.

Wheeling High School, Door 29

1576 | 6/10-6/13 | Mon-Thurs | 1-4:15 pm | \$199

1576A | 6/17-6/20 | Mon-Thurs | 1-4:15 pm | \$199

Grossology

"Grossology" is the science of REALLY gross things, and "grossologists" are the people who study these REALLY gross things. Do you like stinky stuff, slimy stuff, and oozy stuff? Come make fake snot, blisters, blood and wounds, and investigate bizarre animal parts during a week of Grossology.

Messy Spectacular Science

Have you ever seen a soap explosion? Or made something spray or splatter so far that you could not possibly do it indoors? In this course we will look to "go bigger" and "go messier" with activities that will safely educate and entertain. Wheeling High School, Door 29

1578 | 6/10-6/13 | Mon-Thurs | 1-4:15 pm | \$199

1578A | 6/17-6/20 | Mon-Thurs | 1-4:15 pm | \$199

Grades 4-6 | Wheeling STEM Camp

Build a Boat!

This class will focus on investigating buoyancy and floating. Final challenge: construct a boat out of cardboard and float a person across the Wheeling High School pool!

Sportistics

Are you a sports fanatic? Have you ever wondered how sports announcers come up with all of the statistics they talk about? Come join us for "Sportistics", where we will actually play four different sports, and do our own statistical analysis of how we play. Students will participate in Basketball, Baseball, Soccer and Track. Please wear sports gear and gym shoes!

Wheeling High School, Door 29

1580 | 6/10-6/13 | Mon-Thurs | 1-4:15 pm | \$199

1580A | 6/17-6/20 | Mon-Thurs | 1-4:15 pm | \$199





Grades 6-8 | Wheeling STEM Camp

Science of Candy

Within each piece of candy, there is hidden science that leads to making that delicious treat! You will make several types of candy and learn the science of how they are made.

You Spent Your Money On What?

Have you ever wanted to purchase something but realized that all of your allowance money was gone? All of those little purchases add up. In this session we will show you how a little saving can go a long way.

Wheeling High School, Door 1

1584 | 6/10-6/13 | Mon-Thurs | 1-4:15 pm | \$199

1584A | 6/17-6/20 | Mon-Thurs | 1-4:15 pm | \$199

Grades 4-8 | Wheeling STEM Camp

Spa Science

Science from the salon! Learn the science behind some of your favorite spa treatments and activities.

FUN-TECH Coding 3

Did you ever wonder how a game like NBA mobile or Minecraft was created? It is all based on knowing how to talk to your device in a language called code. This class will explore the basics of coding at different levels. You will have a chance to learn through online coding games along with hands on activities.

Wheeling High School, Door 29

1582 | 6/10-6/13 | Mon-Thurs | 1-4:15 pm | \$199

1582A | 6/17-6/20 | Mon-Thurs | 1-4:15 pm | \$199

Grades 5-8 | Wheeling STEM Camp

Photoshop & Sublimation

Are you creative? Do you like to work on the computer? Then this is the class for you. You will learn the basics of Photoshop and create your own personalized items to take home with you.

Learn to Code From Scratch

This class will introduce you to computer science concepts through Scratch. Scratch is a web-based coding environment that allows students to program their own interactive stories, games and animations. Once you have created an account and explored the basics, you can choose from a number of coding activities: Animate Your Name, Make It Fly, Make Music, Race to the Finish, and MORE! **Students should come to class with an email account and password to use for this class.**

Wheeling High School, Door 29

1583 | 6/10-6/13 | Mon-Thurs | 1-4:15 pm | \$199

1583A | 6/17-6/20 | Mon-Thurs | 1-4:15 pm | \$199

Nanotechnology 2

Nanotechnology is the study of very small things. You will get to experience the state of the art WHS Nanotechnology Lab and use instruments like a Scanning Electron Microscope. You will observe the unseen world as you have never imagined, learn about how properties work differently at the nano scale and how scientists use nanotechnology to make cool new products.

Digital Design

Learn how to be a graphic designer! In this workshop you will learn how to use the computer and the Adobe Creative Suite to create unique digital designs from scratch. At the end of the week you'll be able to upload your designs or print them to take home.

Wheeling High School, Door 1

1585 | 6/10-6/13 | Mon-Thurs | 1-4:15 pm | \$199

1585A | 6/17-6/20 | Mon-Thurs | 1-4:15 pm | \$199

LEGO Robotics: Double Session

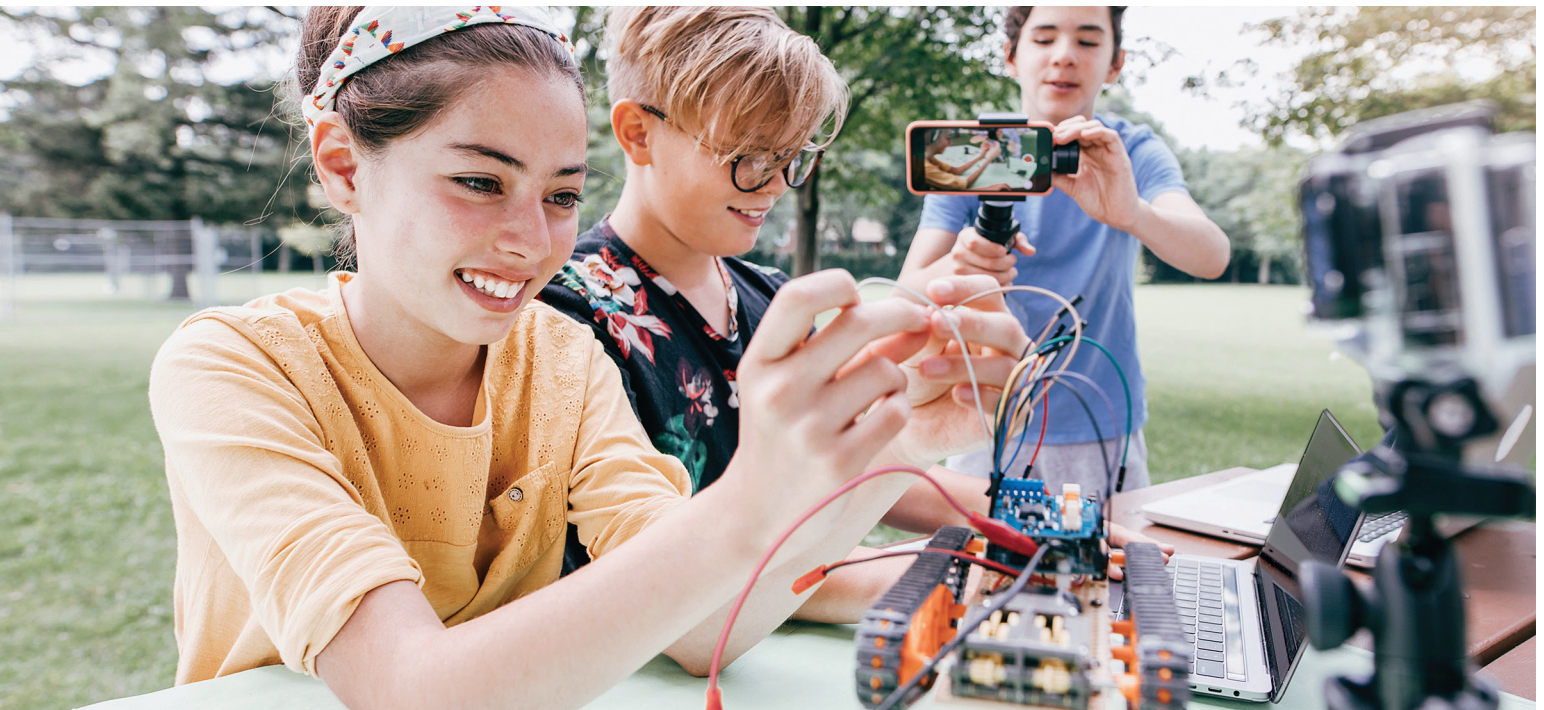
If you love LEGO, robots or computers, this is your chance to have some fun and use your imagination. You will work in small groups using the LEGO Mindstorms EV3 system to build and program your own robot to maneuver through an obstacle course, pick up objects, and make sounds. The possibilities of your robot are only limited to your imagination!

Wheeling High School, Door 1

1587 | 6/10-6/13 | Mon-Thurs | 1-4:15 pm | \$199

1587A | 6/17-6/20 | Mon-Thurs | 1-4:15 pm | \$199





Ages 6-13 | Engineering for Kids Camp

Engineering for Kids STEM Camp

Brand new curriculum will keep the kids engaged and having fun all summer long! The Engineering For Kids Summer STEM Camp introduces students to new fun and educational hands-on project based lessons every week from various engineering disciplines. Each week, students will focus on developing problem solving, critical thinking and peer collaboration skills through our six-step engineering process—Ask, Brainstorm, Design, Build, Test & Improve. During these camps students will learn about engineering, robotics, drone coding, 3D modeling and printing, video game design and so much more. Campers will work on age appropriate projects while they team up with other campers their age.

Early Bird (EB) Registration Deadline:
Tuesday, April 30, 2019

(Engineering For Kids)

Forest View Educational Center, Door 2

1589 | 6/10-6/13 | Mon-Thurs | 9 am-4 pm | \$319 | EB \$289

1590 | 6/17-6/20 | Mon-Thurs | 9 am-4 pm | \$319 | EB \$289

1591 | 6/24-6/27 | Mon-Thurs | 9 am-4 pm | \$319 | EB \$289

1592 | 7/8-7/11 | Mon-Thurs | 9 am-4 pm | \$319 | EB \$289

1593 | 7/15-7/18 | Mon-Thurs | 9 am-4 pm | \$319 | EB \$289

1594 | 7/22-7/25 | Mon-Thurs | 9 am-4 pm | \$319 | EB \$289

Early Drop Off (As early as 8 am)

Forest View Educational Center, Door 2

Mon-Thurs | 8-9 am | \$40/week

Late Pick Up (Pick up by 5 pm)

Forest View Educational Center, Door 4

Mon-Thurs | 4-5 pm | \$40/week

Ages 8-14 | Harper College InZone Camp

 Harper College



Game Generator and Engineering STEM Camp

Our campers will explore new things, develop new interests, strengthen existing skills and make new friends. Learn to build multi-level video games using Game Generator and Micro Media Fusion. The fun doesn't stop here – you'll get to take your game home to play and keep developing. This is primarily a computer based STEM camp experience, but campers will

also participate in fun and learning outdoor small group STEM activities. Each 2-week session will be a new experience.

(Harper College InZone)

Forest View Educational Center-A200a, Door 2

1588 | 7/8-7/18 | Mon-Thurs | 9-4 pm | \$449

1588A | 7/22-8/1 | Mon-Thurs | 9-4 pm | \$449



High School District 214
2121 South Goebbert Road
Arlington Heights, IL 60005

NONPROFIT ORGANIZATION
U.S. POSTAGE
PAID
PALATINE, IL
PERMIT NO. 7147



214 Discovery Camps

- Build A Boat (p 5) ■ Fun with Fluids (p 4)
- Game Generator and Engineering STEM Camp (p 7)
- Messy Spectacular Science (p 5) ■ Nanotechnology 1 (p 5)
- Photoshop & Sublimation (p 6) ■ Science of Candy (p 6)

Register Online ce.d214.org