



# **Consolidated Community School District 59, IL**

## **Review of School Utilization Considerations**

**July 11, 2022**

**CropperGIS**



# *Welcome and Introductions*



# *Who We Are*



# The Company

## Cropper GIS Consulting

K-12 school planning is our business and our passion. Our specialty is school realignment.

Cropper works with K-12 school districts to:

- develop redistricting plans,
- facilitate community engagement,
- research, map and write demographic studies,
- prepare long-range facility master plans,
- author site feasibility studies,
- conduct & publish housing impact and yield factor studies, and
- provide GIS implementation & training.

*Who We Are*

Cropper GIS is an ESRI Authorized Business Partner





# The Company

## Recent Projects:

- CCSD 59, IL
- Morton School District 709, IL
- Mahomet-Seymour Schools, IL
- Elmhurst CUSD 205, IL
- Winnetka Public Schools, IL
- Downer's Grove Schools, IL
- District 126 Alsip, Hazelgreen, Oaklawn, IL
- Charleston County School District, SC
- DeKalb County School District, GA
- Richmond Public Schools, VA
- Baltimore County Public Schools, MD
- Missoula Public Schools, MT
- Akron Public Schools, OH

*Who We Are*



# Matthew Cropper

- More than 20 years experience providing GIS mapping and analysis services to school districts and other clients.
- Manages and Facilitates K-12 redistricting and facility planning projects across the U.S.
- Expert consultant for U.S. Department of Justice, Civil Rights Division
- Published numerous papers about using GIS in master planning and educational planning.



# CCSD 59 and Cropper GIS

## CCSD 59 History with Cropper GIS:

- CCSD 59 has been a Cropper GIS client since 2011 and we have provided consulting services to the district over the years,
- A demographic study was completed in 2012 and an update provided in 2014.
- A full rezoning project was completed in 2013-14.
- The district has been working with Cropper since 2020 to perform additional demographic analysis and to study building utilization and demographics.

*Who We Are*



# Community Consolidated School District 59, IL 2021-22 Elementary School Zones



## Legend

### School Type

- ES
- ▲ JHS
- 2021-22 ES Boundaries

### 2021-22 ES Zones

- Admiral Byrd ES
- Brentwood ES
- Clearmont ES
- Devonshire ES
- Forest View ES
- John Jay ES
- Juliette Low ES
- Robert Frost ES
- Rupley ES
- Salt Creek ES

Admiral Byrd ES

Salt Creek ES

Clearmont ES

Ridge Family Center for Learning

Rupley ES

John Jay ES

Robert Frost ES

Brentwood ES

Devonshire ES

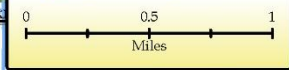
Forest View ES

Juliette Low ES

Data Sources: CCSD 59, Cook County GIS, ESRI  
Cartographer: SD, Jan 2022

Chicago O'Hare  
International  
Airport

CropperGIS





# Community Consolidated School District 59, IL 2021-22 Elementary School Zones



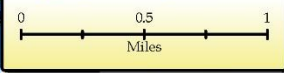
## Legend

### School Type

- ES
- ▲ JHS
- 2021-22 ES Boundaries

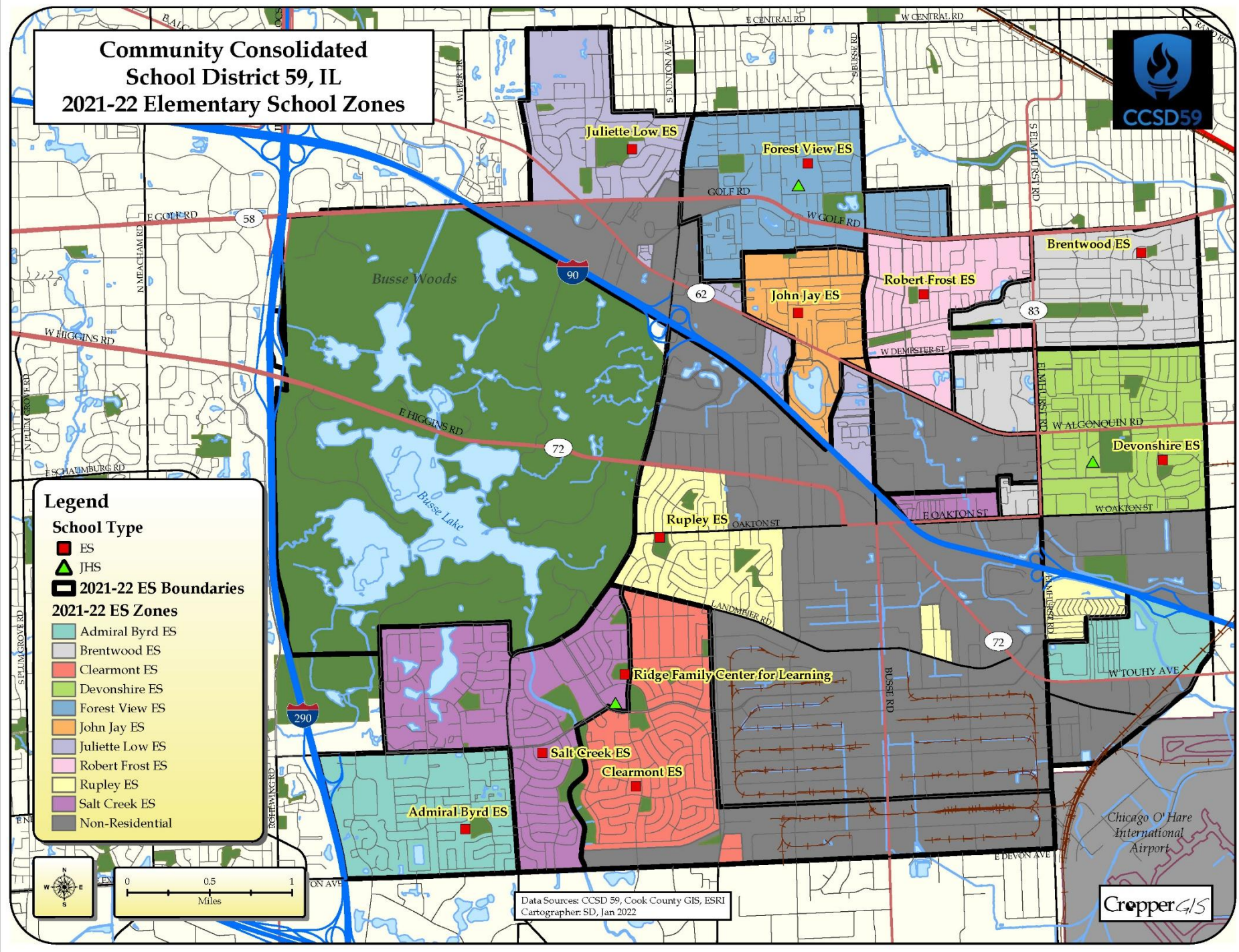
### 2021-22 ES Zones

- Admiral Byrd ES
- Brentwood ES
- Clearmont ES
- Devonshire ES
- Forest View ES
- John Jay ES
- Juliette Low ES
- Robert Frost ES
- Rupley ES
- Salt Creek ES
- Non-Residential



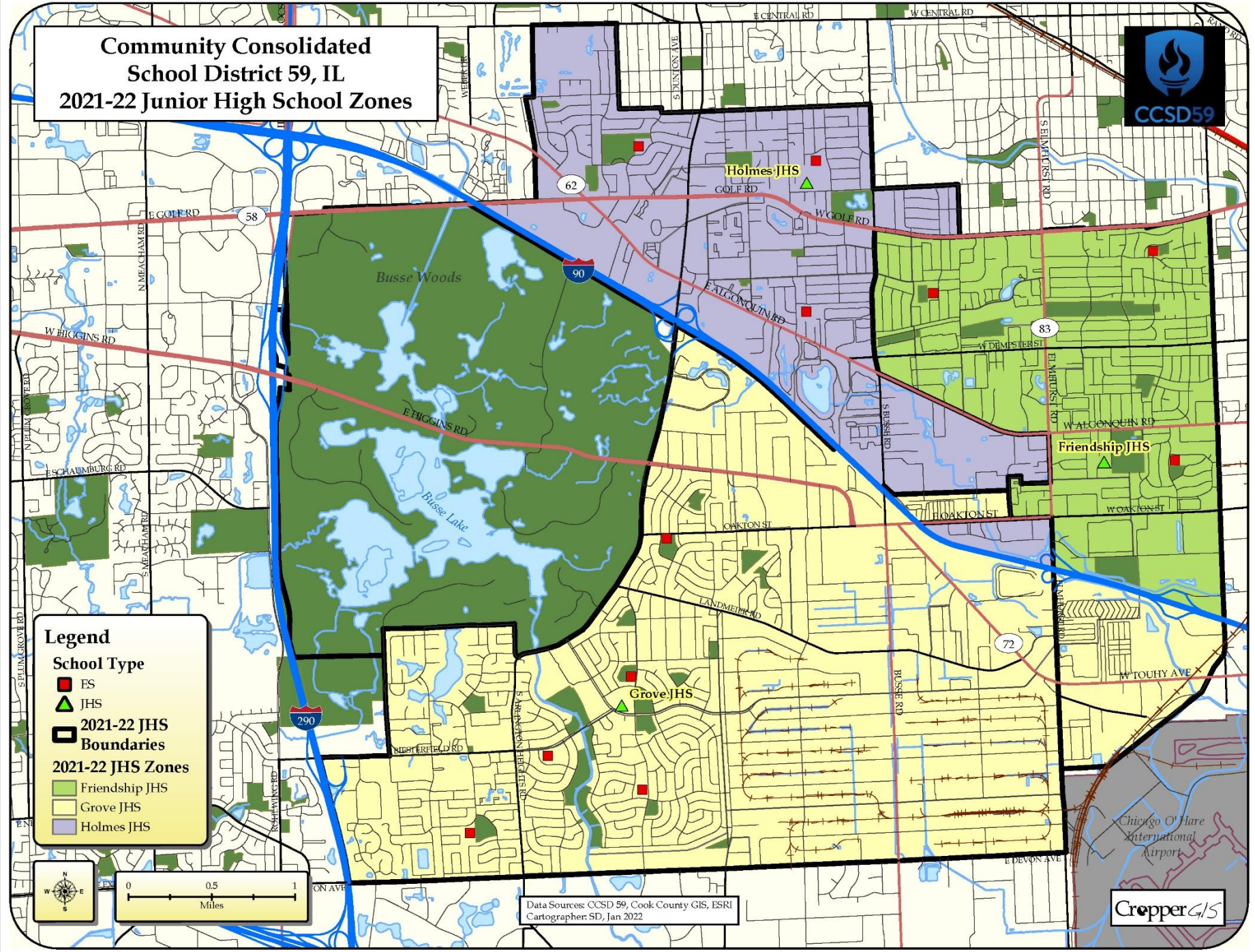
Data Sources: CCSD 59, Cook County GIS, ESRI  
Cartographer: SD, Jan 2022

CropperGIS





# Community Consolidated School District 59, IL 2021-22 Junior High School Zones



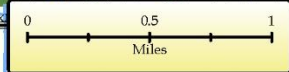
## Legend

### School Type

- ES
- ▲ JHS
- ▬ 2021-22 JHS Boundaries

### 2021-22 JHS Zones

- Friendship JHS
- Grove JHS
- Holmes JHS



Data Sources: CCSD 59, Cook County GIS, ESRI  
Cartographer: SD, Jan 2022

Chicago O'Hare  
International  
Airport

CropperGIS



# Community Consolidated School District 59, IL 2021-22 Junior High School Zones



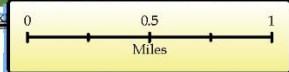
## Legend

### School Type

- ES (Elementary School) - Red square
- JHS (Junior High School) - Green triangle
- Boundaries - Black line

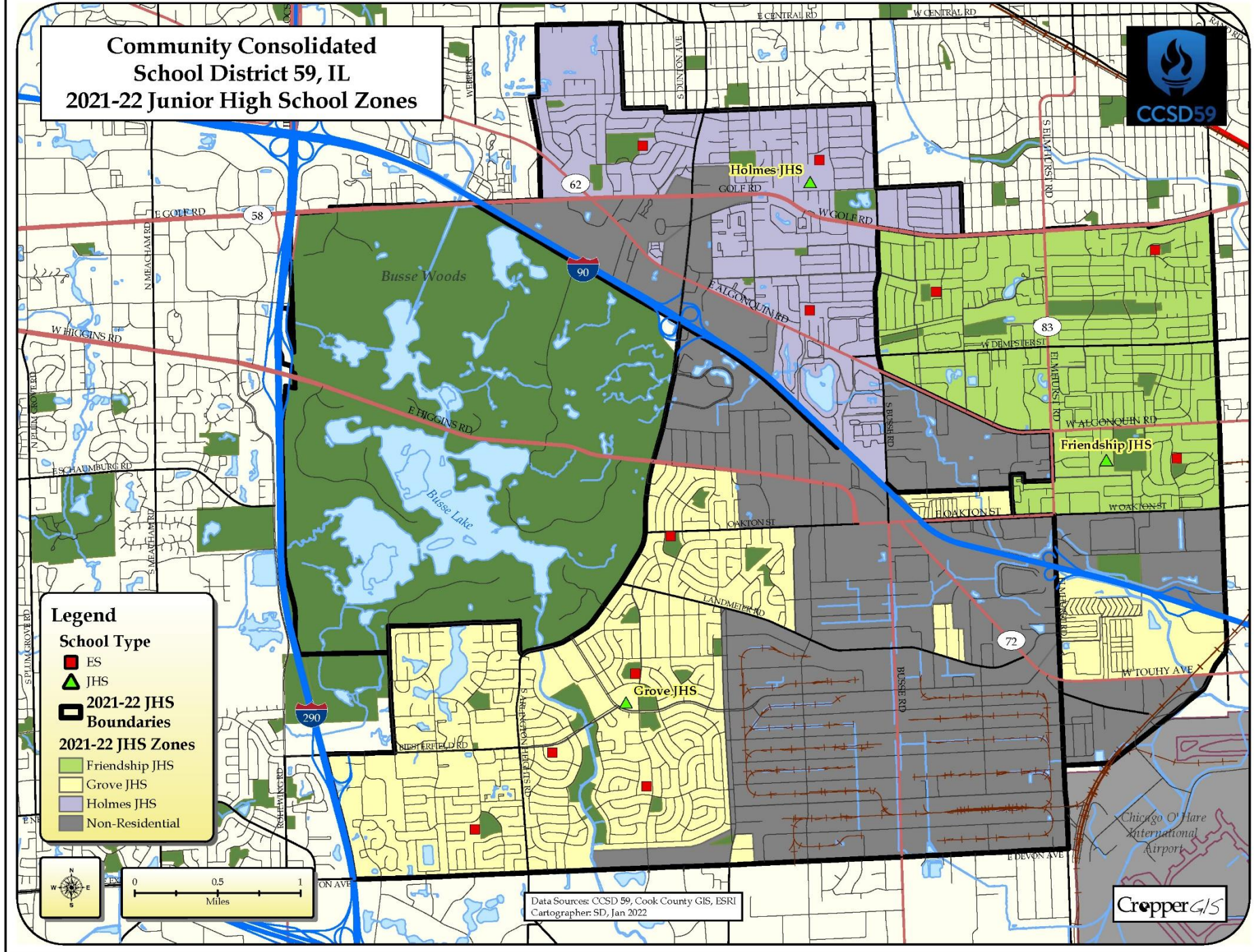
### 2021-22 JHS Zones

- Friendship JHS - Light green
- Grove JHS - Yellow
- Holmes JHS - Purple
- Non-Residential - Grey



Data Sources: CCSD 59, Cook County GIS, ESRI  
Cartographer: SD, Jan 2022

CropperGIS





# Work Performed to Date

1. Cropper recently completed an updated 10-year demographic study. This is a forecast of changing enrollment by building over the course of the next 10 years, based on demographic trends in the district.
  - a) A new live-attend analysis has been completed, this time with heat maps. Heat maps graphically display student population density by school throughout the district; there is a separate map for each school, and one for the whole district.
2. The current schools have been studied in terms of building utilization and demographics, including analysis of ethnicity, race, and socio-economic status for each building.
3. Initial work has begun on modeling potential scenarios that help to address imbalances in utilization and demographics of schools.



# Demographic Study Overview

1. District enrollment will continue to decline over the course of the next 10 years, throughout the length of the study. There will be some year-to-year fluctuation at the elementary level, but a decline overall.
2. Schools with higher proportions of multi-family housing will remain more stable, where schools with higher proportions of single-family owner-occupied housing is expected to see enrollment declines.
3. Not all areas of the district are impacted equally:
  - a) Most elementary schools are forecasted to experience enrollment declines, but there are a few that will remain stable and/or grow.
  - b) Junior High School enrollment is forecasted to decline at all 3 schools.





# Utilization Forecast: Elementary

Utilization Color Key	Elementary School	2021-22 Capacity		2021-22	2022-23	2023-24	2024-25	2025-26	2026-27	2027-28	2028-29	2029-30	2030-31	2031-32
Over 105%														
96% to 105%			Enrollment	334	336	327	331	344	354	359	360	355	348	339
86% to 95%	Devonshire ES	467	Utilization	72%	72%	70%	71%	74%	76%	77%	77%	76%	75%	73%
76% to 85%			Enrollment	429	421	423	422	430	430	429	426	419	412	406
65% to 75%	Brentwood ES	492	Utilization	87%	86%	86%	86%	87%	87%	87%	87%	86%	84%	83%
Under 65%			Enrollment	287	282	270	268	265	250	239	229	223	217	217
	Forest View ES	516	Utilization	56%	55%	52%	52%	51%	48%	46%	44%	43%	42%	42%
			Enrollment	281	268	279	279	293	295	292	286	279	271	263
	Juliette Low ES	688	Utilization	41%	39%	41%	41%	43%	43%	42%	42%	41%	39%	38%
			Enrollment	296	290	284	277	263	247	235	224	213	201	187
	John Jay ES	423	Utilization	70%	69%	67%	65%	62%	58%	56%	53%	50%	48%	44%
			Enrollment	276	301	300	295	297	307	320	307	322	332	340
	Robert Frost ES	497	Utilization	56%	61%	60%	59%	60%	62%	64%	62%	64%	67%	68%
			Enrollment	250	255	259	263	268	269	269	269	269	269	273
	Ridge ES	422	Utilization	59%	60%	61%	62%	64%	64%	64%	64%	64%	64%	64%
			Enrollment	320	320	323	326	336	339	343	343	340	332	327
	Rupley ES	540	Utilization	59%	59%	60%	60%	62%	63%	64%	64%	63%	61%	61%
			Enrollment	423	415	414	391	380	377	370	367	373	383	393
	Salt Creek ES	673	Utilization	63%	62%	62%	58%	56%	56%	55%	55%	55%	57%	58%
			Enrollment	317	337	340	347	350	351	350	353	364	379	396
	Admiral Byrd ES	438	Utilization	72%	77%	78%	79%	80%	80%	80%	81%	83%	87%	90%
			Enrollment	406	422	406	410	399	381	380	377	379	382	383
	Clearmont ES	497	Utilization	82%	85%	82%	82%	80%	77%	76%	76%	76%	77%	77%
			Enrollment	3,619	3,647	3,625	3,609	3,625	3,600	3,586	3,541	3,536	3,526	3,524
	District Totals	5,653	Utilization	64%	64%	64%	64%	64%	64%	63%	63%	63%	62%	62%





# Utilization Forecast: Junior High

Utilization Color Key
Over 105%
96% to 105%
86% to 95%
76% to 85%
65% to 75%
Under 65%

JHS	2021-22 Capacity		2021-22	2022-23	2023-24	2024-25	2025-26	2026-27	2027-28	2028-29	2029-30	2030-31	2031-32
Friendship	813	Enrollment	618	589	570	562	541	523	516	549	562	566	549
		Utilization	76%	72%	70%	69%	67%	64%	63%	68%	69%	70%	68%
Grove	930	Enrollment	883	828	832	837	840	835	836	841	825	818	820
		Utilization	95%	89%	89%	90%	90%	90%	90%	90%	89%	88%	88%
Holmes	692	Enrollment	452	436	402	407	371	385	390	394	369	349	329
		Utilization	65%	63%	58%	59%	54%	56%	56%	57%	53%	50%	48%
District Totals:	2,435	Enrollment	1,953	1,853	1,804	1,806	1,752	1,743	1,742	1,784	1,756	1,733	1,698
		Utilization	80%	76%	74%	74%	72%	72%	72%	73%	72%	71%	70%



# Challenges with Imbalance

Elementary School	Total Enrolled	Enrolled Utilization	American Indian or AK Native	Asian	Black	Hispanic / Latino	Native Hawaiian or Other PI	White	Multi-Racial	Paid	Reduced	Free	Multi-Lingual	Special Ed
Devonshire ES	334	72%	2%	16%	4%	30%	0%	45%	3%	51%	3%	46%	43%	10%
Brentwood ES	429	87%	1%	24%	8%	34%	0%	30%	4%	50%	2%	47%	53%	9%
Forest View ES	287	56%	1%	33%	10%	14%	0%	38%	4%	68%	1%	31%	33%	8%
Juliette Low ES	281	41%	1%	9%	2%	53%	0%	33%	2%	42%	3%	55%	57%	18%
John Jay ES	296	70%	1%	7%	6%	69%	0%	11%	6%	34%	2%	64%	63%	11%
Robert Frost ES	276	56%	0%	8%	7%	46%	0%	35%	4%	43%	1%	56%	56%	12%
Ridge ES	250	59%	0%	24%	2%	14%	0%	57%	3%	71%	1%	28%	28%	9%
Rupley ES	320	59%	7%	7%	2%	55%	0%	27%	3%	36%	5%	59%	66%	31%
Salt Creek ES	423	63%	2%	2%	1%	52%	0%	40%	3%	44%	2%	54%	52%	13%
Admiral Byrd ES	317	72%	2%	2%	2%	71%	0%	22%	2%	36%	2%	62%	61%	11%
Clearmont ES	406	82%	0%	2%	2%	14%	0%	78%	3%	61%	2%	37%	48%	9%
<b>Total</b>	<b>3,619</b>	<b>64%</b>	<b>2%</b>	<b>12%</b>	<b>4%</b>	<b>41%</b>	<b>0%</b>	<b>39%</b>	<b>3%</b>	<b>49%</b>	<b>2%</b>	<b>49%</b>	<b>51%</b>	<b>13%</b>

The district faces several challenges with imbalance. Currently, 3 schools deviate by more than 15% from average utilization (Brentwood, Low, and Clearmont).

9 schools deviate from average Hispanic enrollment by more than 10%. 5 of those schools (Forest View, Jay, Ridge, Byrd, and Clearmont) deviate by more than 15%. 4 of those schools also deviate by more than 15% from the average White enrollment (Jay, Ridge, Byrd, and Clearmont).

5 schools deviate from the average percentage of paid lunch by more than 10%, and 2 of those schools (Forest View and Ridge) by more than 15%.



# Challenges with Imbalance

		2021-22 Enrollment by Race and Ethnicity							2021-22 Lunch Code			2021-22 Mutli-Lingual and Special Ed	
Junior High School	2021-22 Capacity	American Indian or AK Native	Asian	Black	Hispanic/Latino	Native Hawaiian or Other PI	White	Multi-Racial	Paid	Reduced	Free	Multi-Lingual	Special Ed
Friendship JHS	813	2%	17%	5%	32%	0%	41%	2%	50%	4%	45%	30%	11%
Grove JHS	930	1%	4%	2%	52%	0%	40%	2%	47%	5%	48%	35%	9%
Holmes JHS	692	4%	13%	6%	46%	0%	30%	2%	44%	4%	53%	37%	9%
Total	2,435	2%	10%	4%	44%	0%	38%	2%	47%	4%	48%	34%	10%

At the Junior High level, both Grove and Holmes deviate from average utilization by 15%, with Grove being high and Holmes being low.

Friendship's Hispanic enrollment is more than 10% lower than the average. Holmes is within 10% of the average for White enrollment but is 10% lower than the other two schools.

All three schools are well balanced regarding free and reduced lunch.



# Exploring Relief Strategies

Various relief strategies have been explored and discussed with the district team. These strategies include:

- Moving large programs, such as language programs or special education programs, to buildings with extra capacity, or alternatively, spreading programs out more evenly across the district
- Redistricting by moving boundary lines to change where some students attend school.
- Pairing; combining elementary schools into K-2 and 3-5 pairs, so that all students in one zone will attend the K-2 school and then the 3-5 school before moving onto junior high school.
- Repurposing buildings for alternate uses, such as conversion to neighborhood school or to potentially serve another grade level.

Options have been explored and are indicating that significant improvements can be made to reduce the imbalance in utilization and demographics. Some methods only slightly improve the imbalances and others almost completely resolve the imbalances.



# Questions?