



Consolidated Community School District 59, IL

Review of School Boundary DRAFT Options

August 1, 2022

CropperGIS



Challenges that CCSD59 faces regarding imbalances in School utilization and Demographics



Challenges with Imbalance: Elementary Utilization

Elementary School	2021-22 Capacity	Current (2021-22)		
		Total Enrolled	Enrolled Utilization	Enrolled Utilization
Devonshire ES	467	334	72%	72%
Brentwood ES	492	429	87%	87%
Forest View ES	516	287	56%	56%
Juliette Low ES	688	281	41%	41%
John Jay ES	423	296	70%	70%
Robert Frost ES	497	276	56%	56%
Ridge ES	422	250	59%	59%
Rupley ES	540	320	59%	59%
Salt Creek ES	673	423	63%	63%
Admiral Byrd ES	438	317	72%	72%
Clearmont ES	497	406	82%	82%
Total	5,653	3,619	64%	64%

Within 10%

Between 10-15%

Over/Under 15%

Three (3) schools currently operating 15% above or below the district average in terms of utilization.



Challenges with Imbalance: Elementary School Demographics

Within 10%

Between 10-15%

Over/Under 15%

Elementary School	2021-22 Race and Ethnicity							2021-22 Lunch Code			2021-22 Multi-Lingual and Special Ed	
	American Indian or AK Native	Asian	Black	Hispanic/Latino	Native Hawaiian or Other PI	White	Multi-Racial	Paid	Reduced	Free	Multi-Lingual	Special Ed
Devonshire ES	2%	16%	4%	30%	0%	45%	3%	51%	3%	46%	43%	10%
Brentwood ES	1%	24%	8%	34%	0%	30%	4%	50%	2%	47%	53%	9%
Forest View ES	1%	33%	10%	14%	0%	38%	4%	68%	1%	31%	33%	8%
Juliette Low ES	1%	9%	2%	53%	0%	33%	2%	42%	3%	55%	57%	18%
John Jay ES	1%	7%	6%	69%	0%	11%	6%	34%	2%	64%	63%	11%
Robert Frost ES	0%	8%	7%	46%	0%	35%	4%	43%	1%	56%	56%	12%
Ridge ES	0%	24%	2%	14%	0%	57%	3%	71%	1%	28%	28%	9%
Rupley ES	7%	7%	2%	55%	0%	27%	3%	36%	5%	59%	66%	31%
Salt Creek ES	2%	2%	1%	52%	0%	40%	3%	44%	2%	54%	52%	13%
Admiral Byrd ES	2%	2%	2%	71%	0%	22%	2%	36%	2%	62%	61%	11%
Clearmont ES	0%	2%	2%	14%	0%	78%	3%	61%	2%	37%	48%	9%
Total	2%	12%	4%	41%	0%	39%	3%	49%	2%	49%	51%	13%

- 6 of the 11 total elementary schools in the district currently operate over/under 15% average in terms of demographics.
- 5 schools are outside of the 15% threshold in several demographic categories.
- 10 of the 11 total elementary schools operate between 10-15% over/under the district average in demographics.
- 1 elementary school operates within 10% of the district average in all demographics.



Challenges with Imbalance: Junior High Schools

Within 10%

Between 10-15%

Over/Under 15%

Junior High School	2021-22 Capacity	2021-22 Enrollment and Utilization			2021-22 Enrolled Live-Attend				
		Total Enrolled	Enrolled Utilization	Enrolled Utilization	Live-In	Live and Attend-In	Live-Out and Attend-In	Out of District	Unmatched
Friendship JHS	813	618	76%	76%	611	598	20	1	
Grove JHS	930	883	95%	95%	873	859	24		
Holmes JHS	692	452	65%	65%	466	450	2	2	
Total	2,435	1,953	80%	80%	1,950	1,907	46	3	0

Junior High School	2021-22 Enrollment by Race and Ethnicity							2021-22 Lunch Code			2021-22 Multi-Lingual and Special Ed	
	American Indian or AK Native	Asian	Black	Hispanic / Latino	Native Hawaiian or Other PI	White	Multi-Racial	Paid	Reduced	Free	Multi-Lingual	Special Ed
Friendship JHS	2%	17%	5%	32%	0%	41%	2%	50%	4%	45%	30%	11%
Grove JHS	1%	4%	2%	52%	0%	40%	2%	47%	5%	48%	35%	9%
Holmes JHS	4%	13%	6%	46%	0%	30%	2%	44%	4%	53%	37%	9%
Salt Creek JHS												
Total	2%	10%	4%	44%	0%	38%	2%	47%	4%	48%	34%	10%

Junior High Schools are balanced in terms of demographics, and there is a slight imbalance in utilization.

Grove JHS is at 95% utilization when the district utilization for JHS is 80%.



Several DRAFT options have been explored to evaluate alternatives that can address imbalances. All options presented are considered **DRAFT**, and nothing is finalized until the Board of Education approves a plan.

Options involve:

- Potential movement of boundaries i.e. redistricting.
- Alternate uses of facilities (repurpose for another grade level and/or special programs).
- Pairing schools together so that 2 schools serve a geographic area as K-2 and 3-5 grade schools.

Any option that provides a potential solution would not be implemented until 2023-24 school year at the earliest.

We fully expect that options can/will be modified as we engage with the board and public about what is best for all children in CCSD59.



Benefits of School Pairing

School Pairing is a common method used to help alleviate imbalances in school utilization and demographics. Benefits of pairing (K-2/3-5) include:

- Focus and concentration of curriculum/services to 3 grade levels (as K-2 or 3-5) instead of 6 (as K-5).
- Larger number of teachers to collaborate with on grade level.
- More classrooms per grade level could provide more opportunities to match students to teachers according to teaching and learning styles.
- More resources available in media center geared towards individual grades.
- Student feel safe being with other students near/at their own age.
- Students may be able to participate on a more equitable level in more activities and be less influenced by older students.
- Larger number of classes in 3 grade level school allows more opportunities for students from special needs and ELL classes to be integrated with typical peers on a more regular basis.
- Building principal of a 3-grade level school has more of a focus for planning developmentally appropriate school initiatives, activities, and professional development.
- Although an added number of school transitions can be seen as a downside, some believe that having students experience a transition earlier in their schooling better helps them adapt when they transition to Junior High School.



Challenges with School Pairing

Some challenges that exist with pairing of schools include:

- Less convenient for families for parental involvement, PTA participation, and parent volunteers.
- Communication with families if children are at multiple schools instead of one.
- More transitions between schools.
- Staff/student/parent relationships don't have as much longevity as a K-5 school.
- Fewer opportunities for interaction between grade groups including tutoring.
- Scheduling overlaps in family involvement from campus to campus, such as Parent Teacher Conferences.
- Transportation from communities to 2 schools instead of 1 although routing can be coordinated to provide efficiency.



Elementary School: DRAFT Redistricting Only Option

- All grade cohorts remain the same as K-5 Schools
- Students are only moved if they attend their zoned school, but not if they are attending out of zone (i.e. programs or specialty schools)
- Moves boundary lines
- Does not pair schools
- Improves utilization but not demographics.

Community Consolidated School District 59, IL 2021-22 Elementary School Zones



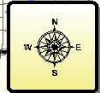
Legend

School Type

- ES
- ▲ JHS
- 2021-22 ES Boundaries

2021-22 ES Zones

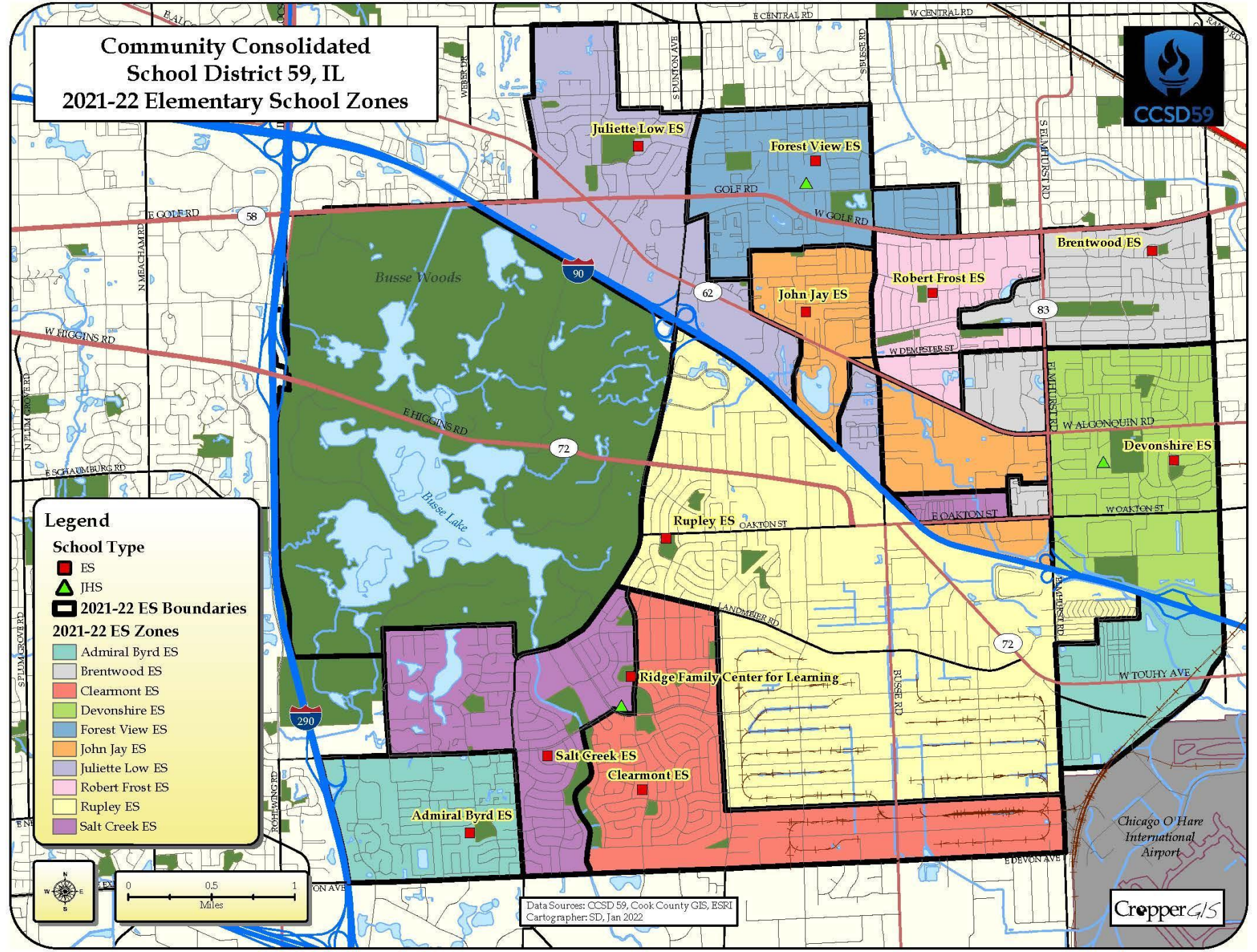
- Admiral Byrd ES
- Brentwood ES
- Clearmont ES
- Devonshire ES
- Forest View ES
- John Jay ES
- Juliette Low ES
- Robert Frost ES
- Rupley ES
- Salt Creek ES



Data Sources: CCSD 59, Cook County GIS, ESRI
Cartographer: SD, Jan 2022

Chicago O'Hare
International
Airport

CropperGIS



Community Consolidated School District 59, IL Elementary Redistricting Option



Legend

School Type

- ES
- ▲ JHS
- 2021-22 ES Boundaries

ES Redistricting Option Zones

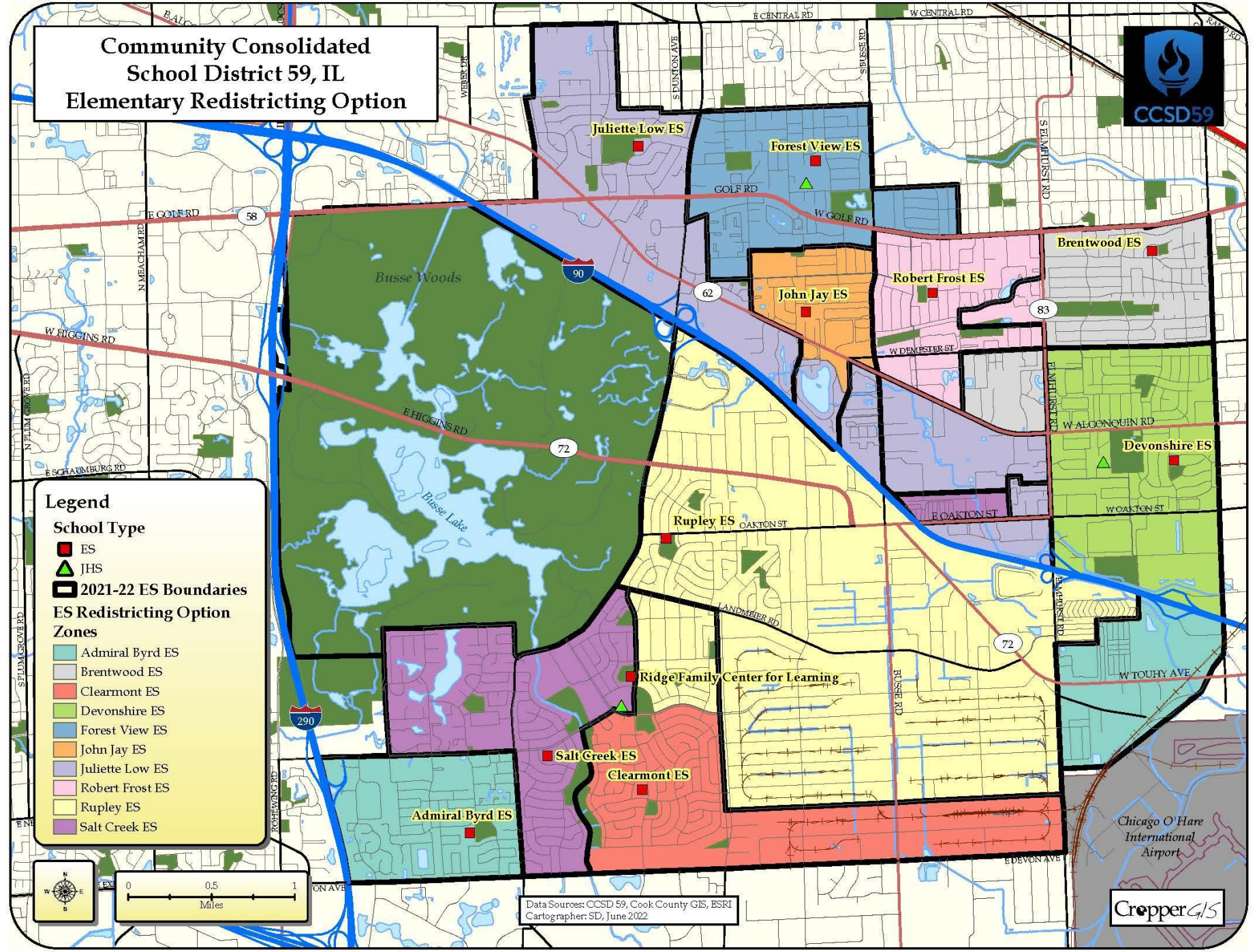
- Admiral Byrd ES
- Brentwood ES
- Clearmont ES
- Devonshire ES
- Forest View ES
- John Jay ES
- Juliette Low ES
- Robert Frost ES
- Rupley ES
- Salt Creek ES



Data Sources: CCSD 59, Cook County GIS, ESRI
Cartographer: SD, June 2022

Chicago O'Hare
International
Airport

CropperGIS





Elementary Schools: Redistricting Only

- All grade cohorts remain the same as K-5 Schools
- Moves boundary lines
- Does not pair schools
- Improves utilization but not demographics.

Within 10%
Between 10-15%
Over/Under 15%

Elementary School	2021-22 Capacity	Current (2021-22)			Redistricting Option - Live Attend			
		Total Enrolled	Enrolled Utilization	Enrolled Utilization	Grade Config.	Estimated Enrollment	Estimated Utilization	Estimated Utilization
Devonshire ES	467	334	72%	72%	K-5	334	72%	72%
Brentwood ES	492	429	87%	87%	K-5	293	60%	60%
Forest View ES	516	287	56%	56%	K-5	287	56%	56%
Juliette Low ES	688	281	41%	41%	K-5	357	52%	52%
John Jay ES	423	296	70%	70%	K-5	278	66%	66%
Robert Frost ES	497	276	56%	56%	K-5	354	71%	71%
Ridge ES	422	250	59%	59%	K-5	250	59%	59%
Rupley ES	540	320	59%	59%	K-5	365	68%	68%
Salt Creek ES	673	423	63%	63%	K-5	423	63%	63%
Admiral Byrd ES	438	317	72%	72%	K-5	317	72%	72%
Clearmont ES	497	406	82%	82%	K-5	361	73%	73%
Total	5,653	3,619	64%	64%		3,619	64%	64%

Brings all schools within 10% of the average utilization except for Juliette Low ES, which would be 12% below average utilization.



Elementary Schools: Redistricting Only

- All grade cohorts remain the same as K-5 Schools
- Moves boundary lines
- Does not pair schools
- Improves utilization but not demographics.

Within 10%
Between 10-15%
Over/Under 15%

Elementary School	Redistricting Option Race and Ethnicity							Redistricting Option Lunch Code			Redistricting Option M.L. and Special Ed	
	American Indian or AK Native	Asian	Black	Hispanic/ Latino	Native Hawaiian or Other PI	White	Multi-Racial	Paid	Reduced	Free	Multi-Lingual	Special Ed
Devonshire ES	2%	16%	4%	30%	0%	45%	3%	51%	3%	46%	43%	10%
Brentwood ES	0%	15%	4%	40%	0%	35%	5%	49%	2%	49%	51%	12%
Forest View ES	1%	33%	10%	14%	0%	38%	4%	68%	1%	31%	33%	8%
Juliette Low ES	1%	16%	5%	47%	0%	29%	2%	46%	4%	50%	55%	15%
John Jay ES	1%	7%	5%	71%	0%	11%	6%	34%	3%	64%	64%	12%
Robert Frost ES	1%	13%	10%	40%	0%	33%	3%	43%	1%	56%	58%	10%
Ridge ES	0%	24%	2%	14%	0%	57%	3%	71%	1%	28%	28%	9%
Rupley ES	6%	7%	3%	50%	0%	31%	2%	40%	4%	55%	60%	28%
Salt Creek ES	2%	2%	1%	52%	0%	40%	3%	44%	2%	54%	52%	13%
Admiral Byrd ES	2%	2%	2%	71%	0%	22%	2%	36%	2%	62%	61%	11%
Clearmont ES	1%	2%	1%	13%	0%	80%	3%	60%	2%	38%	51%	8%
Total	2%	12%	4%	41%	0%	39%	3%	49%	2%	49%	51%	13%

Redistricting option does not resolve imbalances in demographics that currently exist among schools.



Elementary School: DRAFT Pairing/Redistricting Option 1

- Moves boundary lines and pairs schools
- Estimates count all CCSD59 students living within each zone per the grade level
- Pairs
 - Devonshire (K-2) / Brentwood (3-5)
 - Forest View (K-2) / Low (3-5)
 - Jay (K-2) / Frost (3-5),
 - Rupley (K-2) / Salt Creek (3-5)
 - Byrd (K-2) / Clearmont (3-5)
- Repurposes Ridge (usage to be determined)
- Improves demographic balance

Community Consolidated School District 59, IL 2021-22 Elementary School Zones



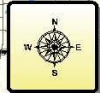
Legend

School Type

- ES
- ▲ JHS
- 2021-22 ES Boundaries

2021-22 ES Zones

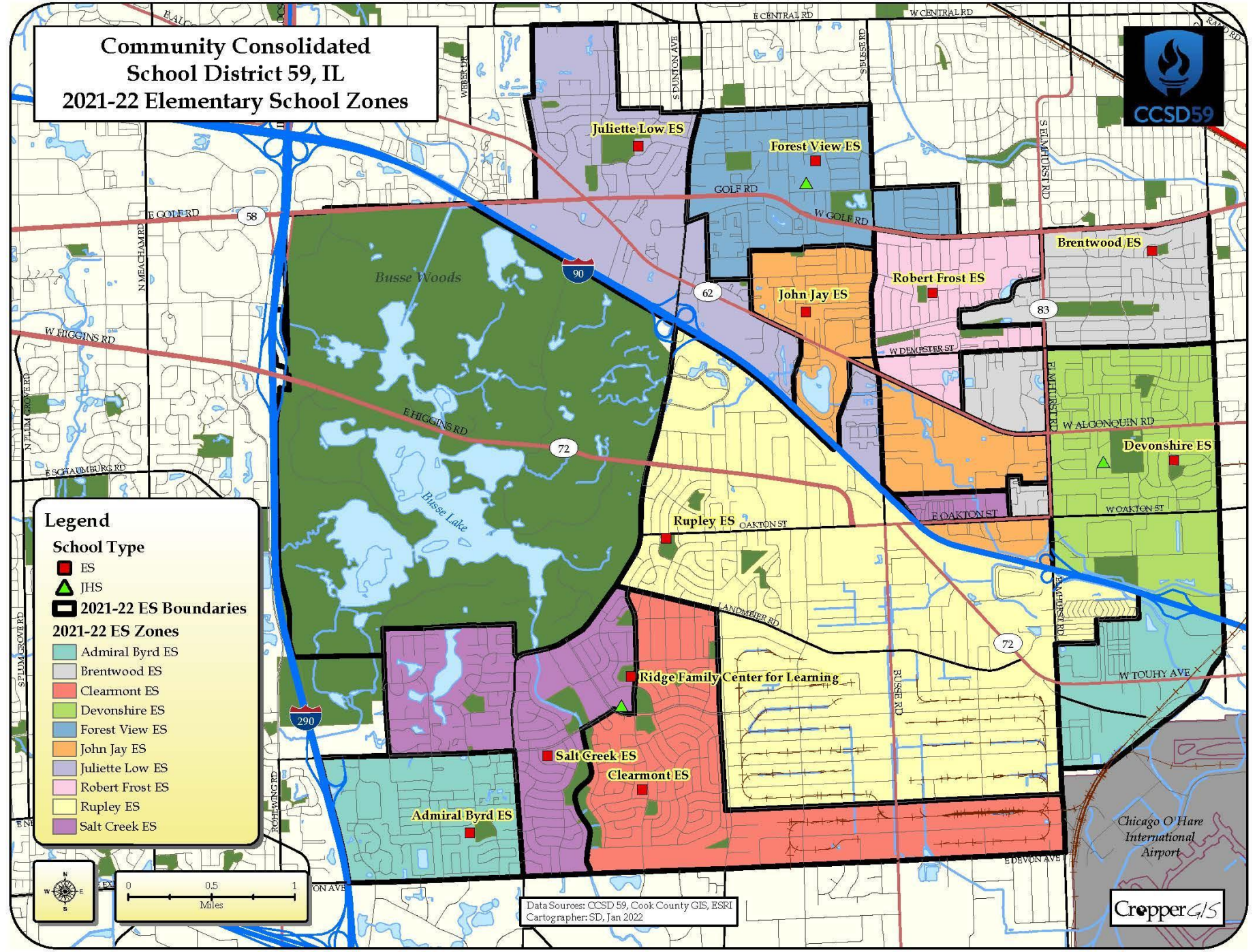
- Admiral Byrd ES
- Brentwood ES
- Clearmont ES
- Devonshire ES
- Forest View ES
- John Jay ES
- Juliette Low ES
- Robert Frost ES
- Rupley ES
- Salt Creek ES



Data Sources: CCSD 59, Cook County GIS, ESRI
Cartographer: SD, Jan 2022

Chicago O'Hare
International
Airport

CropperGIS



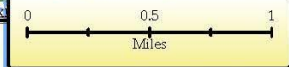
Community Consolidated School District 59, IL ES Pairing and Redistricting Option 1



Legend

School Type

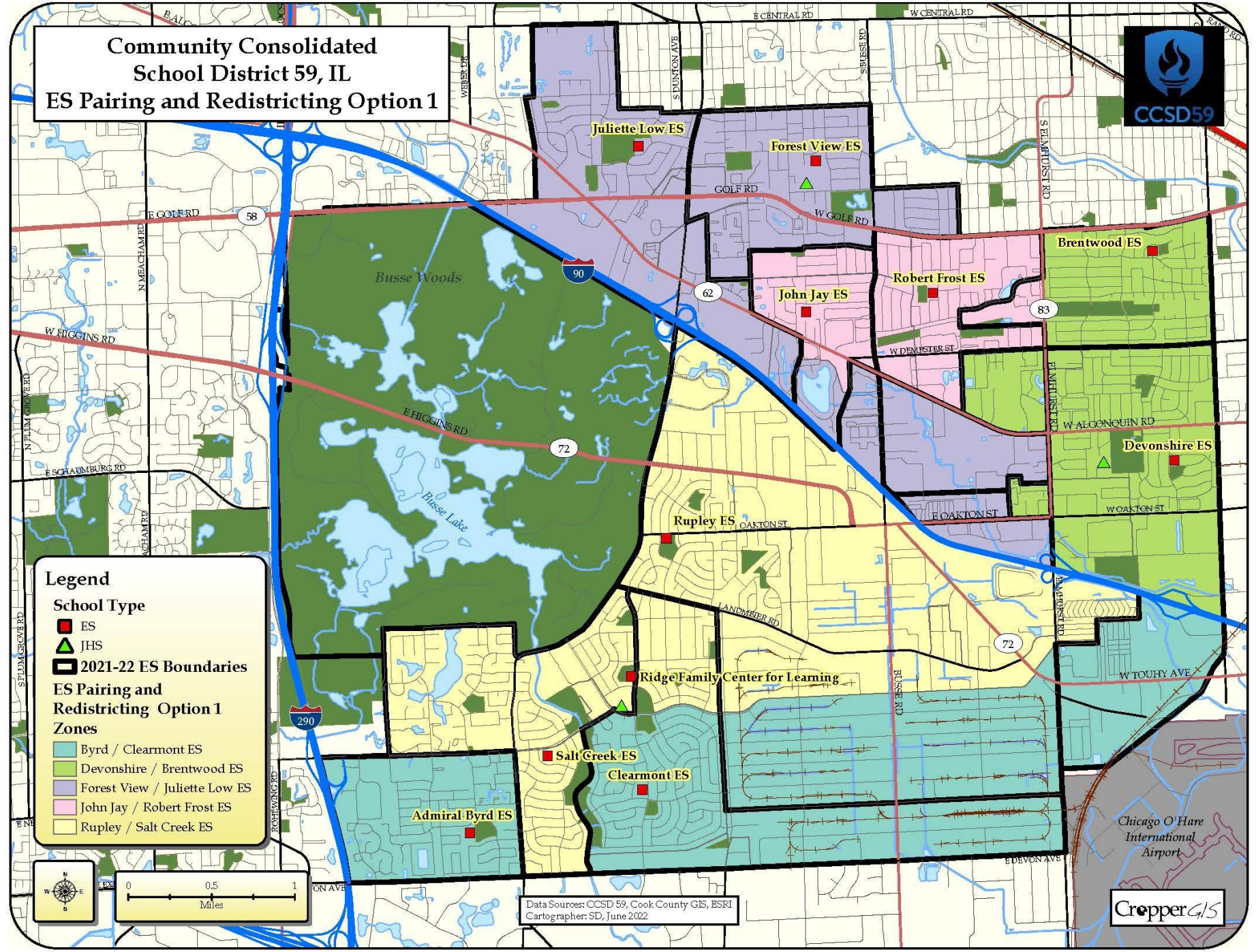
- ES
- ▲ JHS
- 2021-22 ES Boundaries
- ES Pairing and Redistricting Option 1 Zones**
- Byrd / Clearmont ES
- Devonshire / Brentwood ES
- Forest View / Juliette Low ES
- John Jay / Robert Frost ES
- Rupley / Salt Creek ES



Data Sources: CCSD 59, Cook County GIS, ESRI
Cartographer: SD, June 2022

Chicago O'Hare
International
Airport

CropperGIS





Elementary Schools: Pairing/Redistricting Option 1

		Pairing and Redistricting Option 1 - Live In		
Elementary School	2021-22 Capacity	Grade Config.	Estimated Enrollment	Estimated Utilization
Devonshire ES	467	K-2	371	79%
Brentwood ES	492	3-5	422	86%
Forest View ES	516	K-2	376	73%
Juliette Low ES	688	3-5	382	56%
John Jay ES	423	K-2	339	80%
Robert Frost ES	497	3-5	325	65%
Ridge ES	422	NA*	0	
Rupley ES	540	K-2	383	71%
Salt Creek ES	673	3-5	401	60%
Admiral Byrd ES	438	K-2	310	71%
Clearmont ES	497	3-5	310	62%
Total	5,653		3,619	69%

Within 10%

Between 10-15%

Over/Under 15%

Brentwood ES at 86% utilization but overall schools are closer to district average utilization.



Elementary Schools: Pairing/Redistricting Option 1

Within 10%

Between 10-15%

Over/Under 15%

Elementary School	Grade Config.	Pairing and Redistricting Option 1 Race and Ethnicity							Pairing and Redistricting Option 1 Lunch Code			Redistricting / Pairing Option 1 M.L. and S.E.	
		American Indian or AK Native	Asian	Black	Hispanic / Latino	Native Hawaiian or Other PI	White	Multi-Racial	Paid	Reduced	Free	Multi-Lingual	Special Ed
Devonshire ES	K-2	1%	16%	4%	33%	0%	41%	5%	49%	4%	47%	50%	13%
Brentwood ES	3-5	2%	18%	5%	33%	0%	40%	2%	55%	3%	42%	49%	13%
Forest View ES	K-2	2%	20%	5%	37%	0%	33%	4%	47%	1%	51%	56%	14%
Juliette Low ES	3-5	1%	18%	5%	42%	0%	32%	2%	52%	2%	46%	47%	10%
John Jay ES	K-2	1%	14%	7%	45%	0%	28%	5%	44%	1%	56%	61%	14%
Robert Frost ES	3-5	1%	13%	7%	49%	0%	26%	3%	39%	2%	59%	60%	13%
Ridge ES	NA*												
Rupley ES	K-2	4%	3%	2%	38%	0%	50%	3%	49%	3%	48%	52%	12%
Salt Creek ES	3-5	3%	5%	2%	42%	0%	44%	2%	51%	3%	46%	44%	14%
Admiral Byrd ES	K-2	1%	3%	2%	48%	0%	45%	2%	50%	2%	49%	48%	12%
Clearmont ES	3-5	2%	4%	2%	45%	0%	45%	3%	49%	2%	49%	46%	10%
Total		2%	12%	4%	41%	0%	39%	3%	49%	2%	49%	51%	13%

*Schools listed as NA are not assumed to be closed but are being repurposed.

Pairing schools removes all imbalances over 15% and only a few that are over/under 10% of the district averages.



Elementary School: DRAFT Pairing/Redistricting Option 2

- Moves boundary lines and pairs schools
- Pairs
 - Devonshire (K-2) / Brentwood (3-5),
 - Forest View (K-2) / Low (3-5),
 - Jay (K-2) / Frost (3-5),
 - Ridge (K-2) / Salt Creek (3-5) and
 - Byrd (K-2) / Clearmont (3-5)
- Repurposes Rupley (usage to be determined)
- Improves demographic balance

Community Consolidated School District 59, IL 2021-22 Elementary School Zones



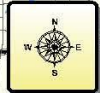
Legend

School Type

- ES
- ▲ JHS
- 2021-22 ES Boundaries

2021-22 ES Zones

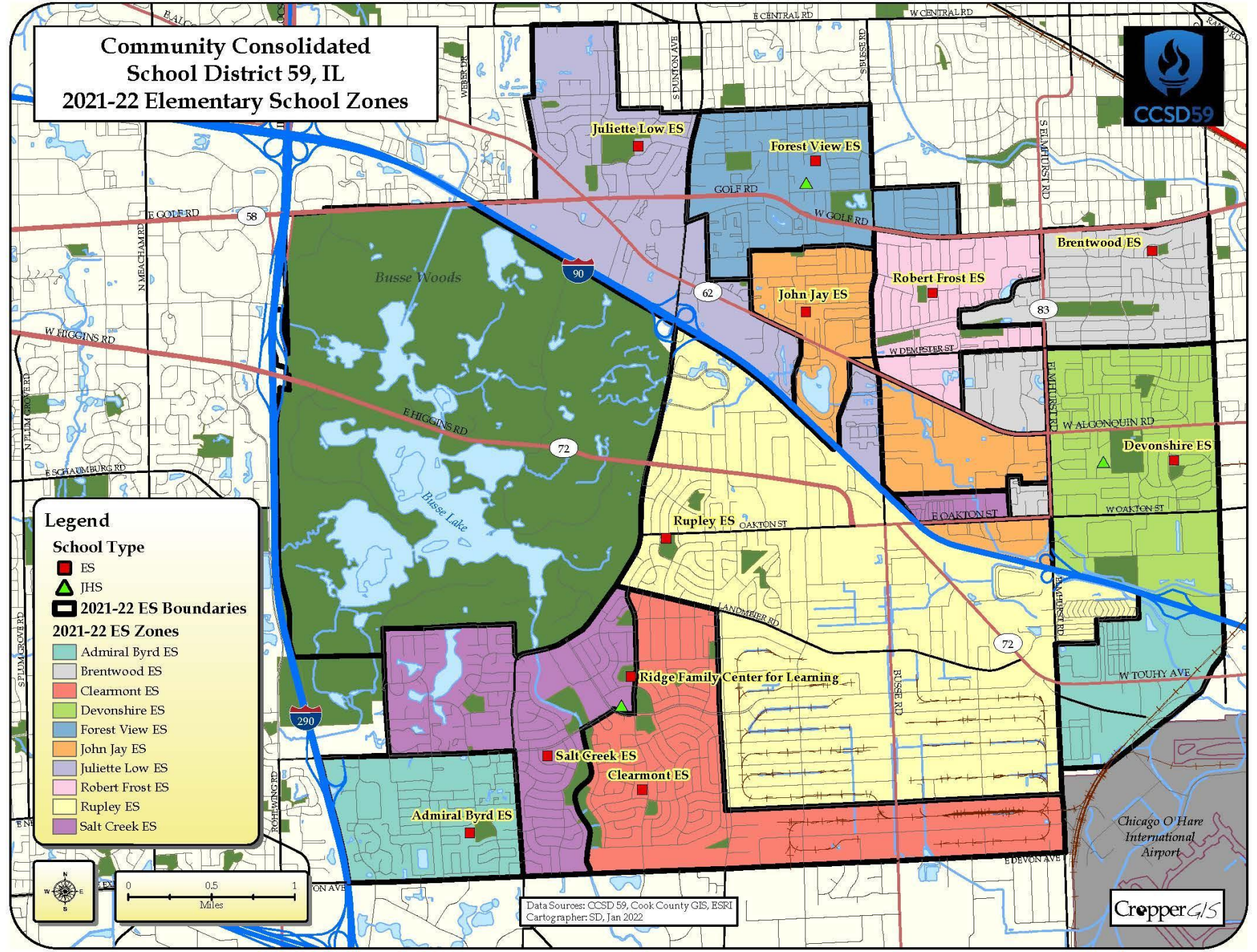
- Admiral Byrd ES
- Brentwood ES
- Clearmont ES
- Devonshire ES
- Forest View ES
- John Jay ES
- Juliette Low ES
- Robert Frost ES
- Rupley ES
- Salt Creek ES



Data Sources: CCSD 59, Cook County GIS, ESRI
Cartographer: SD, Jan 2022

Chicago O'Hare
International
Airport

CropperGIS



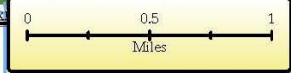
Community Consolidated School District 59, IL ES Pairing and Redistricting Option 2



Legend

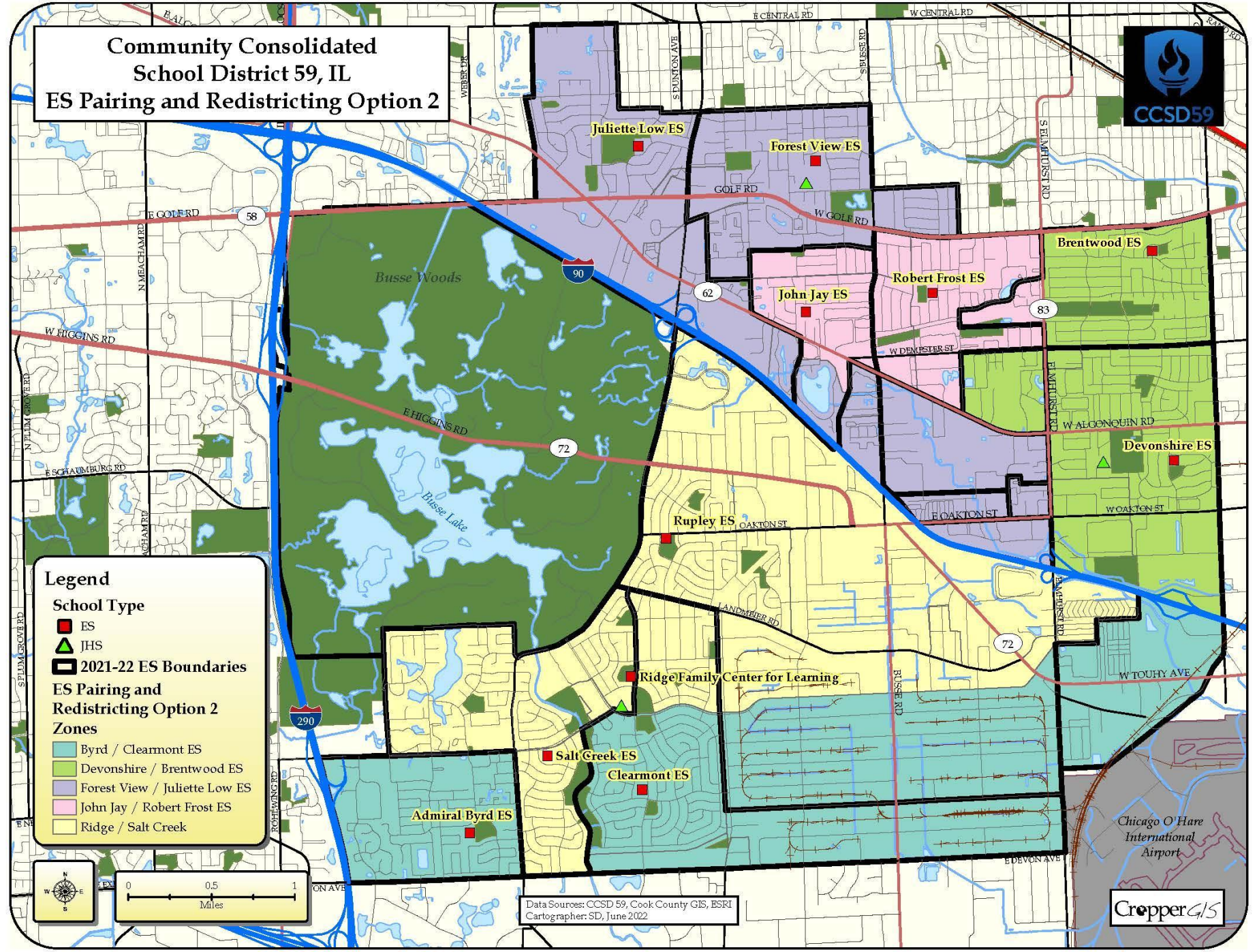
School Type

- ES
- ▲ JHS
- 2021-22 ES Boundaries
- ES Pairing and Redistricting Option 2 Zones**
- Byrd / Clearmont ES
- Devonshire / Brentwood ES
- Forest View / Juliette Low ES
- John Jay / Robert Frost ES
- Ridge / Salt Creek



Data Sources: CCSD 59, Cook County GIS, ESRI
Cartographer: SD, June 2022

Chicago O'Hare
International
Airport





Elementary Schools: Pairing/Redistricting Option 2

		Pairing and Redistricting Option 2 - Live In		
Elementary School	2021-22 Capacity	Grade Config.	Estimated Enrollment	Estimated Utilization
Devonshire ES	467	K-2	341	73%
Brentwood ES	492	3-5	391	79%
Forest View ES	516	K-2	406	79%
Juliette Low ES	688	3-5	413	60%
John Jay ES	423	K-2	339	80%
Robert Frost ES	497	3-5	325	65%
Ridge ES	422	K-2	383	91%
Rupley ES	540	NA *	0	
Salt Creek ES	673	3-5	401	60%
Admiral Byrd ES	438	K-2	310	71%
Clearmont ES	497	3-5	310	62%
Total	5,653		3,619	71%

Within 10%
Between 10-15%
Over/Under 15%

Using Ridge instead of Rupley in Option 2 shows higher utilization for that pairing.



Elementary Schools: Pairing/Redistricting Option 2

Within 10%

Between 10-15%

Over/Under 15%

Elementary School	Grade Config.	Pairing and Redistricting Option 2 Race and Ethnicity							Pairing and Redistricting Option 2 Lunch Code			Pairing / Redistricting Option 2 M.L. and S.E.	
		American Indian or AK Native	Asian	Black	Hispanic / Latino	Native Hawaiian or Other PI	White	Multi-Racial	Paid	Reduced	Free	Multi-Lingual	Special Ed
Devonshire ES	K-2	1%	13%	3%	34%	0%	44%	5%	49%	3%	48%	50%	13%
Brentwood ES	3-5	2%	14%	4%	34%	0%	43%	3%	53%	3%	44%	49%	13%
Forest View ES	K-2	1%	22%	5%	36%	0%	31%	4%	48%	2%	50%	56%	15%
Juliette Low ES	3-5	1%	21%	6%	40%	0%	30%	2%	54%	3%	44%	47%	10%
John Jay ES	K-2	1%	14%	7%	45%	0%	28%	5%	44%	1%	56%	61%	14%
Robert Frost ES	3-5	1%	13%	7%	49%	0%	26%	3%	39%	2%	59%	60%	13%
Ridge ES	K-2	4%	3%	2%	38%	0%	50%	3%	49%	3%	48%	52%	12%
Rupley ES	NA*												
Salt Creek ES	3-5	3%	5%	2%	42%	0%	44%	2%	51%	3%	46%	44%	14%
Admiral Byrd ES	K-2	1%	3%	2%	48%	0%	45%	2%	50%	2%	49%	48%	12%
Clearmont ES	3-5	2%	4%	2%	45%	0%	45%	3%	49%	2%	49%	46%	10%
Total		2%	12%	4%	41%	0%	39%	3%	49%	2%	49%	51%	13%

*Schools listed as NA are not assumed to be closed but are being repurposed.

Pairing schools removes all imbalances over 15% and only a few that are over/under 10% of the district averages.



Elementary School: DRAFT Pairing/Redistricting Option 3

- Moves boundary lines and pairs schools
- Flips grade cohorts of Devonshire/Brentwood and Jay/Frost as compared to Options 1 and 2
- Pairs
 - Brentwood (K-2) / Devonshire (3-5),
 - Forest View (K-2) / Low (3-5),
 - Frost (K-2) / Jay (3-5),
 - Ridge (K-2) / Rupley (3-5)
 - Byrd (K-2) / Clearmont (3-5)
- Repurposes Salt Creek to a Junior High School
- Maintains perfect feeder patterns
- Improves demographic balance

Community Consolidated School District 59, IL 2021-22 Elementary School Zones



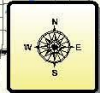
Legend

School Type

- ES
- ▲ JHS
- 2021-22 ES Boundaries

2021-22 ES Zones

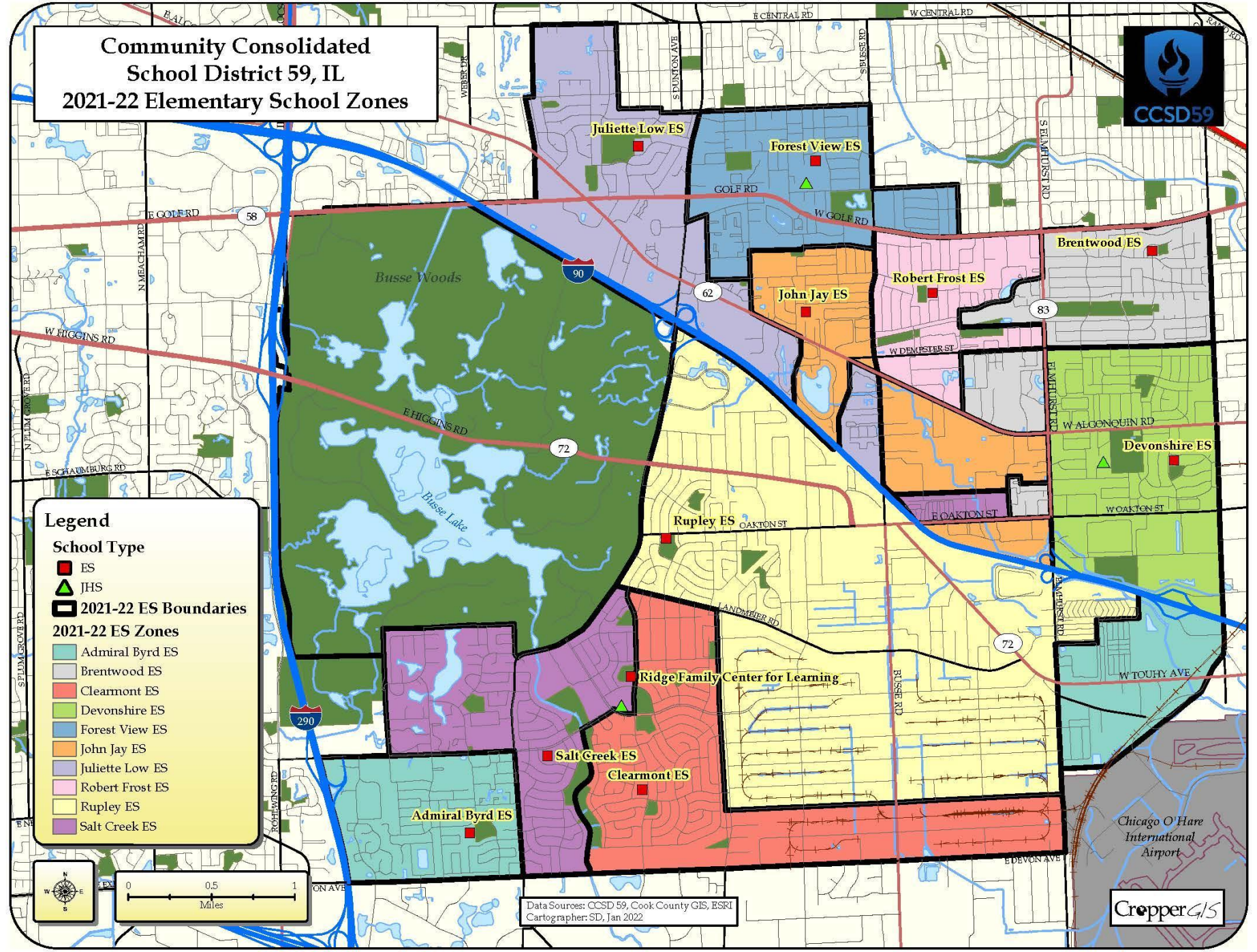
- Admiral Byrd ES
- Brentwood ES
- Clearmont ES
- Devonshire ES
- Forest View ES
- John Jay ES
- Juliette Low ES
- Robert Frost ES
- Rupley ES
- Salt Creek ES



Data Sources: CCSD 59, Cook County GIS, ESRI
Cartographer: SD, Jan 2022

Chicago O'Hare
International
Airport

CropperGIS



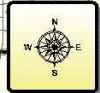
Community Consolidated School District 59, IL ES Pairing and Redistricting Option 3



Legend

School Type

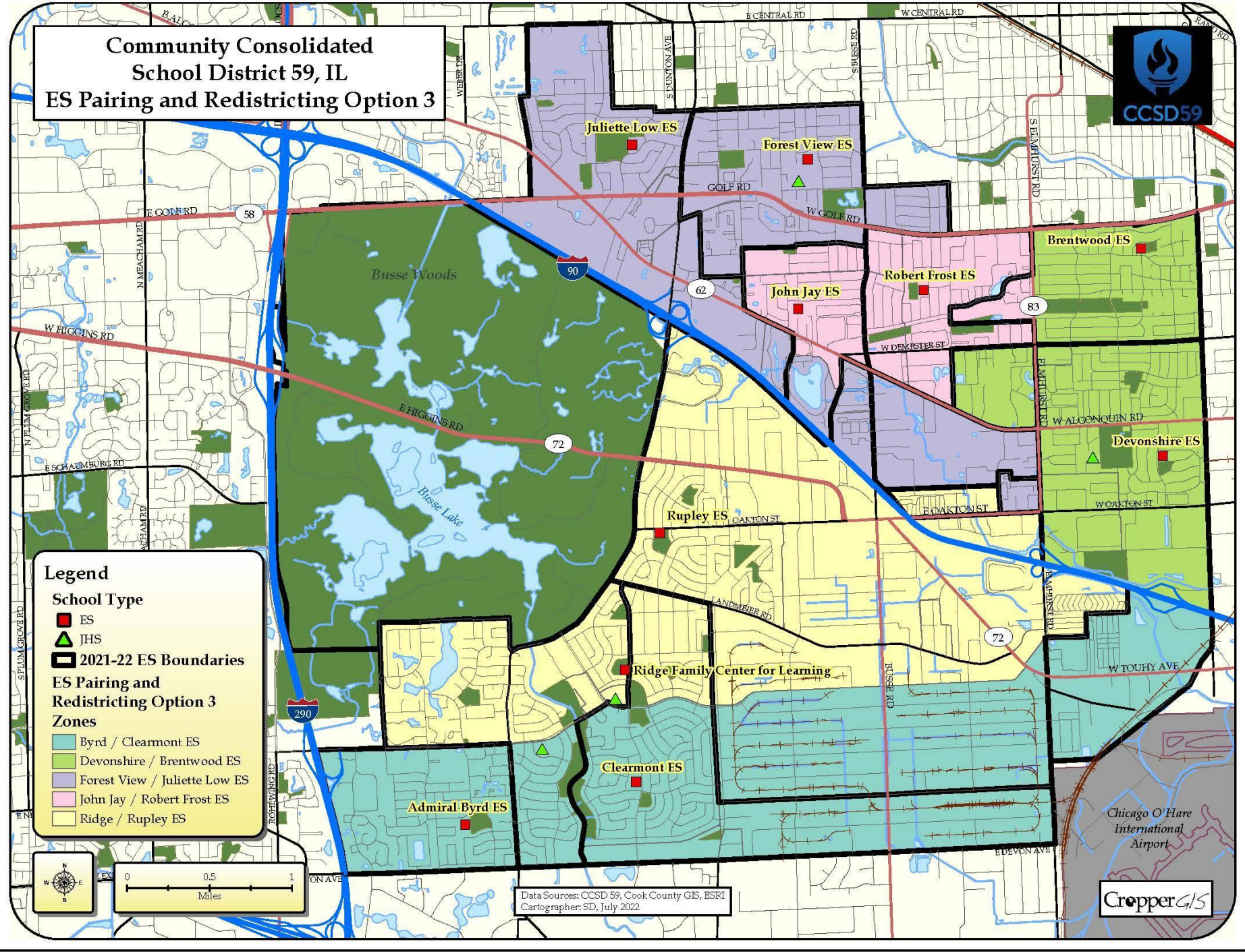
- ES
 - ▲ JHS
 - 2021-22 ES Boundaries
- ### ES Pairing and Redistricting Option 3 Zones
- Byrd / Clearmont ES
 - Devonshire / Brentwood ES
 - Forest View / Juliette Low ES
 - John Jay / Robert Frost ES
 - Ridge / Rupley ES



Data Sources: CCSD 59, Cook County GIS, ESRI
Cartographer: SD, July 2022

Chicago O'Hare
International
Airport

CropperGIS





Elementary Schools: Pairing/Redistricting Option 3

		Pairing and Redistricting Option 3 - Live In		
Elementary School	2021-22 Capacity	Grade Config.	Estimated Enrollment	Estimated Utilization
Devonshire ES	467	3-5	391	84%
Brentwood ES	492	K-2	341	69%
Forest View ES	516	K-2	358	69%
Juliette Low ES	688	3-5	362	53%
John Jay ES	423	3-5	324	77%
Robert Frost ES	497	K-2	340	68%
Ridge ES	422	K-2	386	91%
Rupley ES	540	3-5	415	77%
Salt Creek ES	673	NA *	0	
Admiral Byrd ES	438	K-2	353	81%
Clearmont ES	497	3-5	349	70%
Total	5,653		3,619	73%

Within 10%
Between 10-15%
Over/Under 15%

Communities on Oakton Rd go to Ridge/Rupley which lowers Juliette Low ES utilization. Ridge ES utilization is still high like in Option 2.



Elementary Schools: Pairing/Redistricting Option 3

Within 10%

Between 10-15%

Over/Under 15%

Elementary School	Grade Config.	Pairing and Redistricting Option 3 Race and Ethnicity							Pairing and Redistricting Option 3 Lunch Code			Pairing/Redistricting Option 3 M.L. and S.E.	
		American Indian or AK Native	Asian	Black	Hispanic/Latino	Native Hawaiian or Other PI	White	Multi-Racial	Paid	Reduced	Free	Multi-Lingual	Special Ed
Devonshire ES	3-5	2%	14%	4%	34%	0%	43%	3%	53%	3%	44%	49%	13%
Brentwood ES	K-2	1%	13%	3%	34%	0%	44%	5%	49%	3%	48%	50%	13%
Forest View ES	K-2	1%	24%	6%	30%	0%	34%	4%	52%	2%	46%	52%	14%
Juliette Low ES	3-5	1%	24%	7%	33%	0%	33%	2%	58%	3%	39%	42%	10%
John Jay ES	K-2	1%	13%	7%	49%	0%	27%	3%	39%	2%	60%	60%	13%
Robert Frost ES	3-5	1%	14%	7%	44%	0%	28%	5%	44%	1%	56%	61%	14%
Ridge ES	K-2	4%	3%	2%	46%	0%	43%	2%	41%	2%	56%	59%	13%
Rupley ES	3-5	3%	5%	2%	50%	0%	37%	2%	45%	3%	52%	52%	13%
Salt Creek ES	NA*												
Admiral Byrd ES	K-2	1%	3%	1%	45%	0%	48%	3%	54%	2%	45%	45%	12%
Clearmont ES	3-5	2%	3%	2%	42%	0%	48%	3%	52%	2%	46%	43%	10%
Total		2%	12%	4%	41%	0%	39%	3%	49%	2%	49%	51%	13%

*Schools listed as NA are not assumed to be closed but are being repurposed.

Pairing schools removes all imbalances over 15% and only a few that are over/under 10% of the district averages. More demographic categories in the yellow than pairing options 1 and 2.



Elementary School: DRAFT Pairing/Redistricting Option 4

- Moves boundary lines and pairs schools
- Flips grade cohorts of Devonshire/Brentwood and Jay/Frost as compared to Options 1 and 2
- Pairs
 - Brentwood (K-2) / Devonshire (3-5),
 - Forest View (K-2) / Low (3-5),
 - Frost (K-2) / Jay (3-5),
 - Ridge (K-2) / Byrd (3-5)
 - Clearmont (K-2) / Rupley (3-5)
- Repurposes Salt Creek to a Junior High School
- Creates a feeder pattern split at Frost / Jay between Friendship and Holmes
- Improves utilization
- Improves demographic balance

Community Consolidated School District 59, IL 2021-22 Elementary School Zones



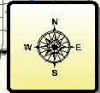
Legend

School Type

- ES
- ▲ JHS
- 2021-22 ES Boundaries

2021-22 ES Zones

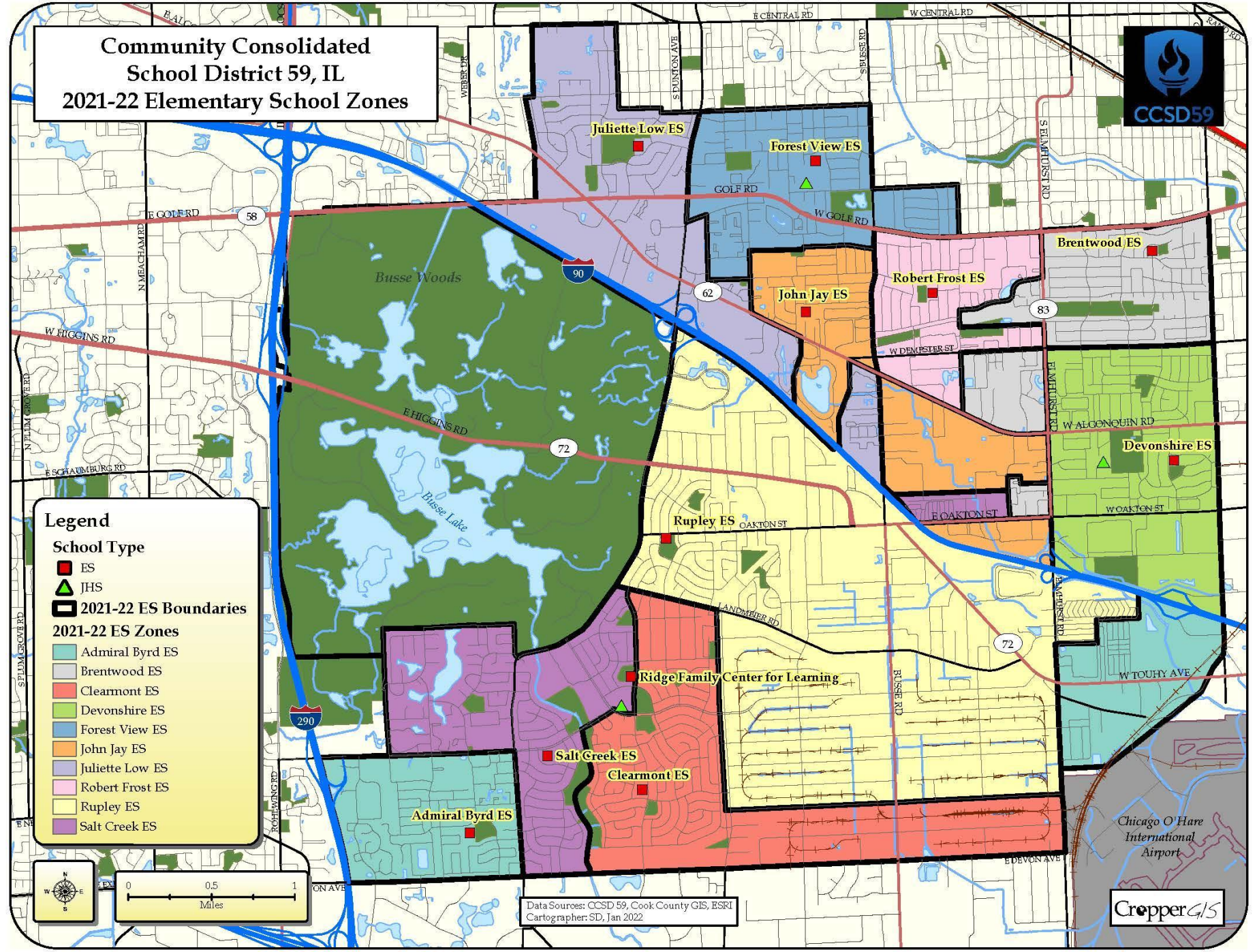
- Admiral Byrd ES
- Brentwood ES
- Clearmont ES
- Devonshire ES
- Forest View ES
- John Jay ES
- Juliette Low ES
- Robert Frost ES
- Rupley ES
- Salt Creek ES



Data Sources: CCSD 59, Cook County GIS, ESRI
Cartographer: SD, Jan 2022

Chicago O'Hare
International
Airport

CropperGIS



Community Consolidated School District 59, IL ES Pairing and Redistricting Option 4



Legend

School Type



2021-22 ES Boundaries



ES Pairing and Redistricting Option 4 Zones

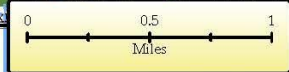
Clearmont / Rupley ES

Devonshire / Brentwood ES

Forest View / Juliette Low ES

John Jay / Robert Frost ES

Ridge / Byrd ES



Data Sources: CCSD 59, Cook County GIS, ESRI
Cartographer: SD, July 2022

Chicago O'Hare
International
Airport

CropperGIS



Elementary Schools: Pairing/Redistricting Option 4

Pairing and Redistricting Option 4 - Live In				
Elementary School	Capacity	Grade Config.	Estimated Enrollment	Estimated Utilization
Devonshire ES	467	3-5	391	84%
Brentwood ES	492	K-2	341	69%
Forest View ES	516	K-2	358	69%
Juliette Low ES	688	3-5	362	53%
John Jay ES	423	3-5	324	77%
Robert Frost ES	497	K-2	340	68%
Ridge ES	422	K-2	351	83%
Admiral Byrd ES	438	3-5	366	84%
Salt Creek ES	673	NA*	0	
Clearmont ES	497	K-2	390	78%
Rupley ES	540	3-5	396	73%
	5,673		3,619	73%

Within 10%

Between 10-15%

Over/Under 15%

Communities on Oakton Rd go to Clearmont/Rupley which lowers Juliette Low ES utilization. Other schools are within 15% of the district utilization.



Elementary Schools: Pairing/Redistricting Option 4

Within 10%

Between 10-15%

Over/Under 15%

Elementary School	Grade Config.	Pairing and Redistricting Option 4 - Race and Ethnicity							Pairing and Redistricting Option 4 Lunch Code			Pairing/Redistricting Option 4 M.L. and S.E.	
		American Indian or AK Native	Asian	Black	Hispanic/Latino	Native Hawaiian or Other PI	White	Multi-Racial	Paid	Reduced	Free	Multi-Lingual	Special Ed
Devonshire ES	3-5	1%	13%	3%	34%	0%	44%	5%	49%	3%	48%	50%	13%
Brentwood ES	K-2	2%	14%	4%	34%	0%	43%	3%	53%	3%	44%	49%	13%
Forest View ES	K-2	1%	24%	6%	30%	0%	34%	4%	52%	2%	46%	52%	14%
Juliette Low ES	3-5	1%	24%	7%	33%	0%	33%	2%	58%	3%	39%	42%	10%
John Jay ES	K-2	1%	14%	7%	44%	0%	28%	5%	44%	1%	56%	61%	14%
Robert Frost ES	3-5	1%	13%	7%	49%	0%	27%	3%	39%	2%	60%	60%	13%
Ridge ES	K-2	1%	4%	3%	43%	0%	48%	2%	52%	2%	46%	44%	11%
Rupley ES	3-5	1%	5%	2%	40%	0%	48%	3%	56%	1%	43%	43%	13%
Salt Creek ES	NA*												
Admiral Byrd ES	K-2	4%	2%	1%	47%	0%	43%	3%	42%	2%	55%	61%	14%
Clearmont ES	3-5	4%	4%	2%	53%	0%	37%	2%	42%	4%	55%	53%	11%
Total		2%	12%	4%	41%	0%	39%	3%	49%	2%	49%	51%	13%

*Schools listed as NA are not assumed to be closed but are being repurposed.

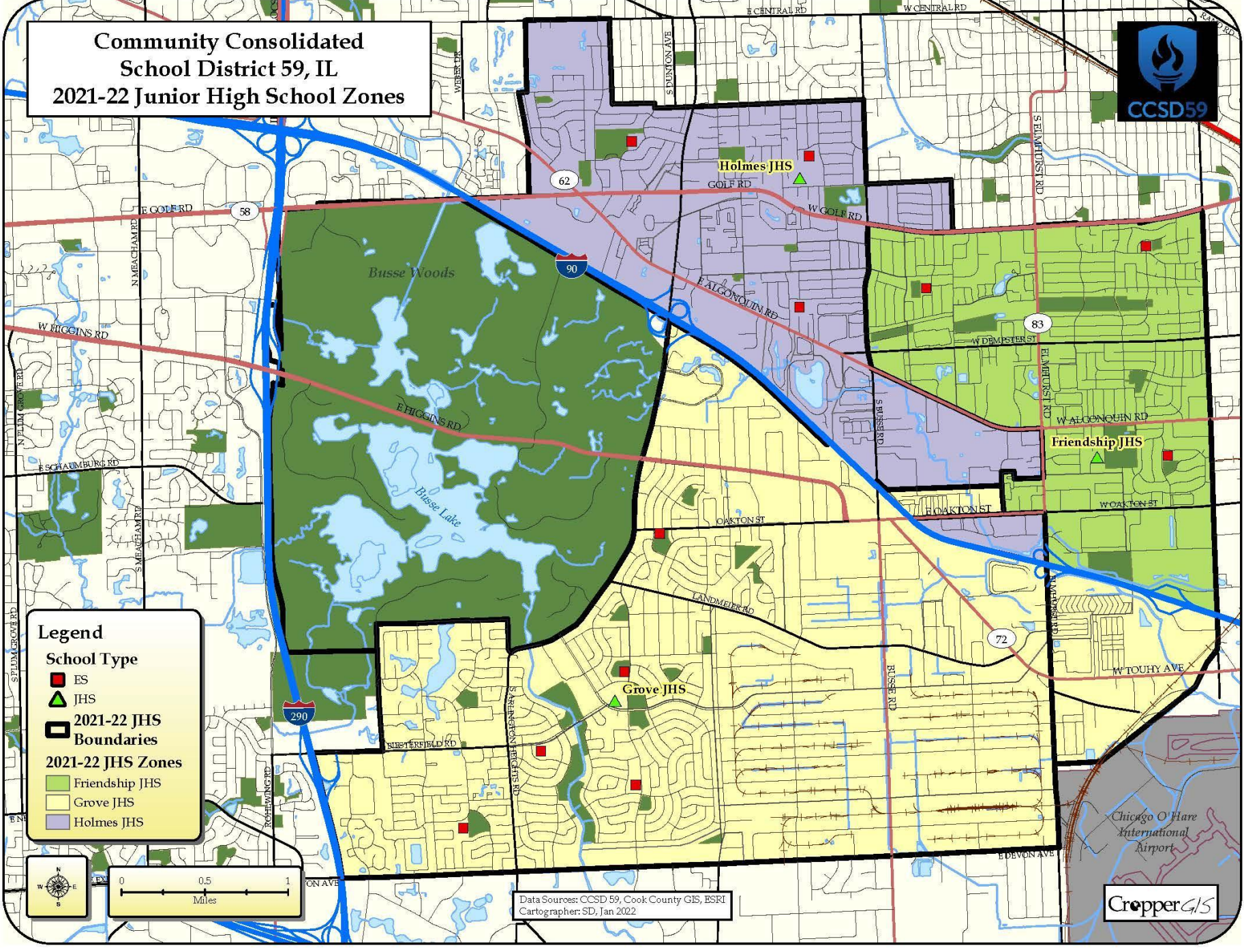
Pairing schools removes all imbalances over 15% and only a few that are over/under 10% of the district averages. More demographic categories in the yellow than pairing options 1 and 2.



Junior High School: DRAFT Redistricting Option

- Same option for JHS for the redistricting and pairing options 1 and 2.
- Communities on Oakton Rd. moved to Holmes JHS from Grove JHS to balance school utilization.

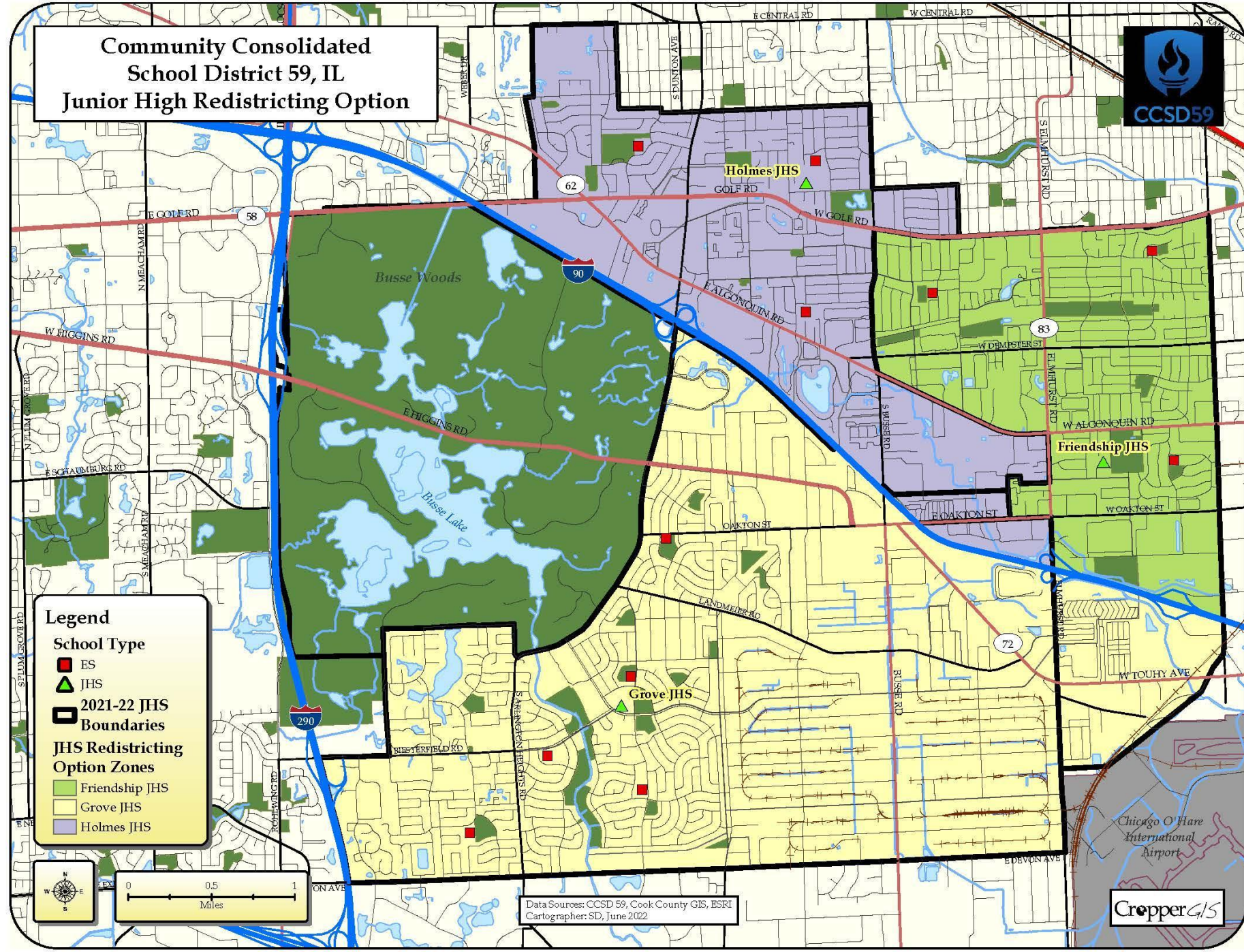
Community Consolidated School District 59, IL 2021-22 Junior High School Zones



Data Sources: CCSD 59, Cook County GIS, ESRI
Cartographer: SD, Jan 2022

CropperGIS

Community Consolidated School District 59, IL Junior High Redistricting Option



Data Sources: CCSD 59, Cook County GIS, ESRI
Cartographer: SD, June 2022

CropperGIS



Junior High Schools: Redistricting Option

Within 10%

Between 10-15%

Over/Under 15%

Junior High School	2021-22 Capacity	2021-22			Redistricting Option - Live-In		
		Total Enrolled	Enrolled Utilization	Enrolled Utilization	Estimated Enrollment	Estimated Utilization	Estimated Utilization
Friendship JHS	813	618	76%	76%	612	75%	75%
Grove JHS	930	883	95%	95%	814	88%	88%
Holmes JHS	692	452	65%	65%	527	76%	76%
Salt Creek JHS	673						
Total	3,108	1,953	80%	80%	1,953	80%	80%

Balance of utilization and minimal number of students impacted.
Option fits for ES redistricting option and pairing options 1 and 2.



Junior High Schools: Redistricting Option

Within 10%
Between 10-15%
Over/Under 15%

Junior High School	2021-22 Enrollment by Race and Ethnicity							2021-22 Lunch Code			2021-22 Multi-Lingual and Special Ed	
	American Indian or AK Native	Asian	Black	Hispanic / Latino	Native Hawaiian or Other PI	White	Multi-Racial	Paid	Reduced	Free	Multi-Lingual	Special Ed
Friendship JHS	2%	17%	5%	32%	0%	41%	2%	50%	4%	45%	30%	11%
Grove JHS	1%	4%	2%	52%	0%	40%	2%	47%	5%	48%	35%	9%
Holmes JHS	4%	13%	6%	46%	0%	30%	2%	44%	4%	53%	37%	9%
Salt Creek JHS												
Total	2%	10%	4%	44%	0%	38%	2%	47%	4%	48%	34%	10%

Junior High School	Redistricting Option Race and Ethnicity							Redistricting Option Lunch Code			Redistricting Option M.L. and Special Ed	
	American Indian or AK Native	Asian	Black	Hispanic / Latino	Native Hawaiian or Other PI	White	Multi-Racial	Paid	Reduced	Free	Multi-Lingual	Special Ed
Friendship JHS	2%	17%	5%	31%	0%	42%	2%	51%	4%	45%	30%	10%
Grove JHS	1%	4%	2%	50%	0%	42%	2%	49%	5%	47%	31%	8%
Holmes JHS	4%	12%	5%	50%	0%	26%	2%	41%	4%	55%	42%	11%
Salt Creek JHS												
Total	2%	10%	4%	44%	0%	38%	2%	47%	4%	48%	34%	10%

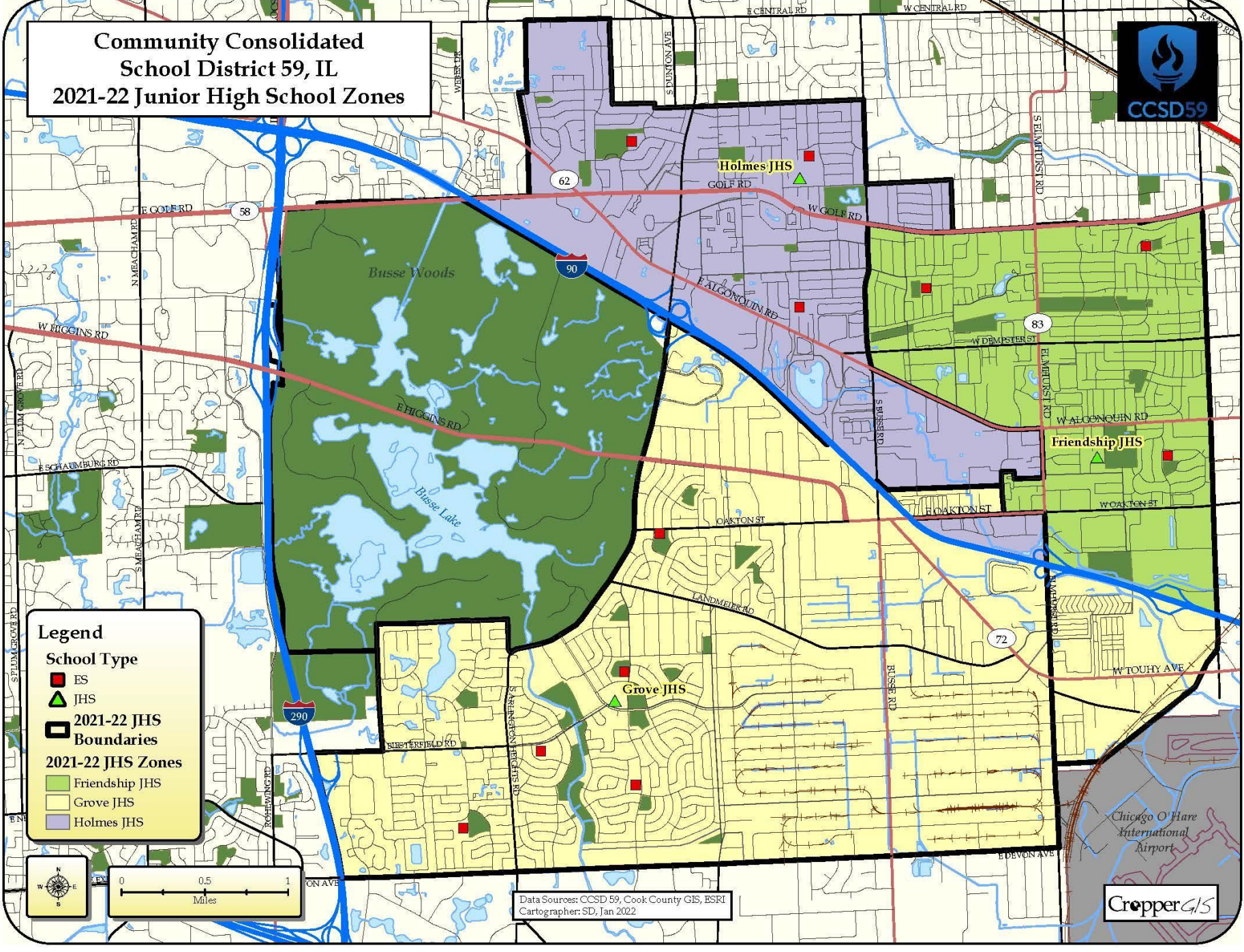
Minor adjustment has little impact on demographics versus the balance provided to improved utilization.



Junior High School: DRAFT Redistricting Option 3

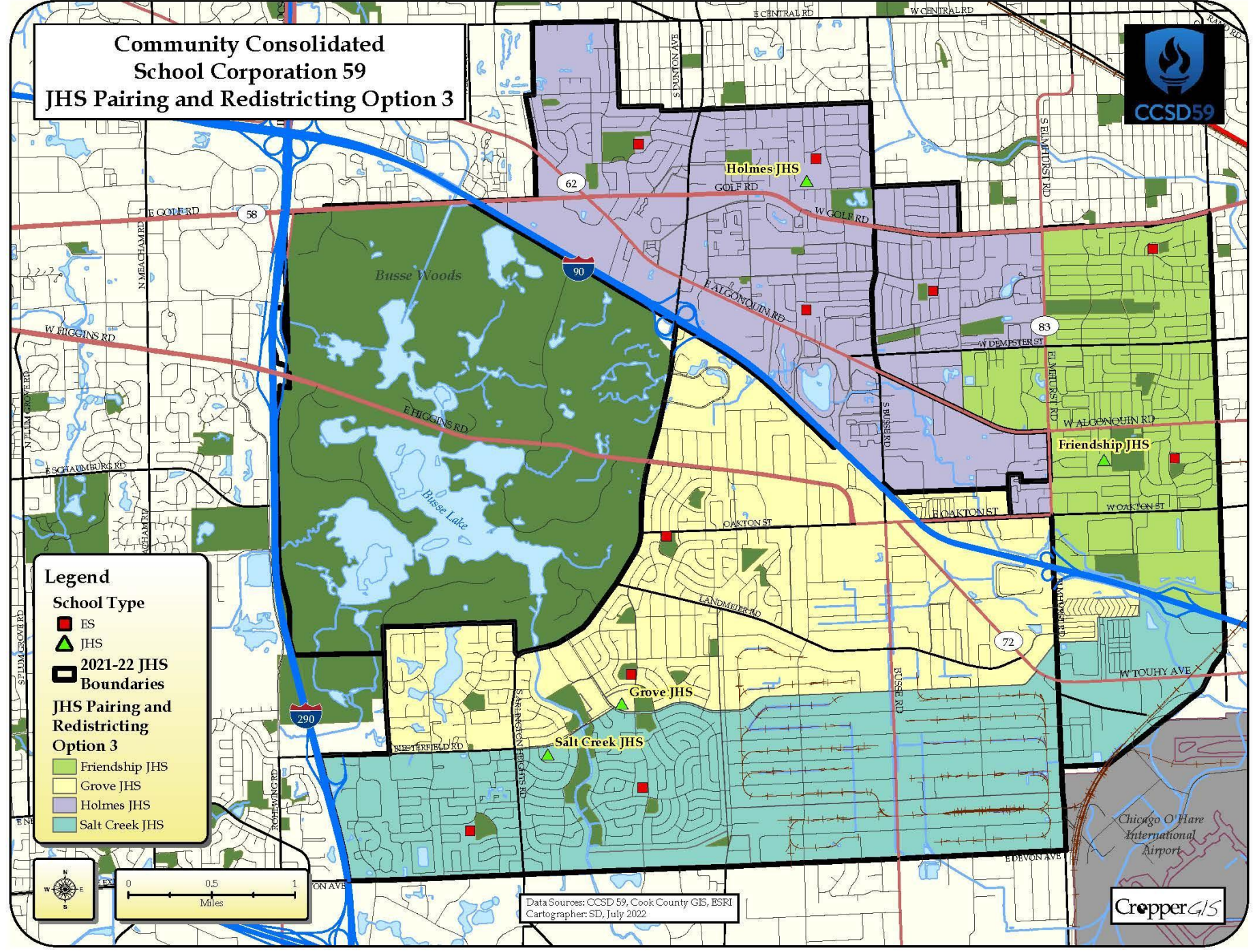
- Repurposes Salt Creek to a Junior High School
- All ES paired schools feed 100% into JHS.

Community Consolidated School District 59, IL 2021-22 Junior High School Zones



Data Sources: CCSD 59, Cook County GIS, ESRI
Cartographer: SD, Jan 2022

CropperGIS





Junior High Schools: Option 3

		Pairing / Redistricting Option 3 - Live In		
Junior High School	2021-22 Capacity	Estimated Enrollment	Estimated Utilization	Estimated Utilization
Friendship JHS	813	403	50%	50%
Grove JHS	930	514	55%	55%
Holmes JHS	692	676	98%	98%
Salt Creek JHS	673	360	53%	53%
Total	3,108	1,953	63%	63%

Within 10%

Between 10-15%

Over/Under 15%

Attempt to maintain 100% feeders from ES to JHS results in imbalance between Friendship and Holmes.



Junior High Schools: Option 3

Within 10%

Between 10-15%

Over/Under 15%

Junior High School	2021-22 Enrollment by Race and Ethnicity							2021-22 Lunch Code			2021-22 Multi-Lingual and Special Ed	
	American Indian or AK Native	Asian	Black	Hispanic / Latino	Native Hawaiian or Other PI	White	Multi-Racial	Paid	Reduced	Free	Multi-Lingual	Special Ed
Friendship JHS	2%	17%	5%	32%	0%	41%	2%	50%	4%	45%	30%	11%
Grove JHS	1%	4%	2%	52%	0%	40%	2%	47%	5%	48%	35%	9%
Holmes JHS	4%	13%	6%	46%	0%	30%	2%	44%	4%	53%	37%	9%
Salt Creek JHS												
Total	2%	10%	4%	44%	0%	38%	2%	47%	4%	48%	34%	10%

Junior High School	Pairing and Redistricting Option 3 Race and Ethnicity							Pairing and Redistricting Option 3 Lunch Code			Pairing / Redistricting Option 3 M.L. and S.E.	
	American Indian or AK Native	Asian	Black	Hispanic / Latino	Native Hawaiian or Other PI	White	Multi-Racial	Paid	Reduced	Free	Multi-Lingual	Special Ed
Friendship JHS	2%	18%	4%	30%	0%	42%	3%	52%	5%	43%	30%	9%
Grove JHS	1%	3%	1%	61%	0%	31%	2%	40%	6%	54%	41%	11%
Holmes JHS	3%	14%	6%	42%	0%	33%	2%	45%	3%	51%	36%	11%
Salt Creek JHS	1%	4%	2%	39%	0%	52%	2%	56%	3%	41%	24%	6%
Total	2%	10%	4%	44%	0%	38%	2%	47%	4%	48%	34%	10%

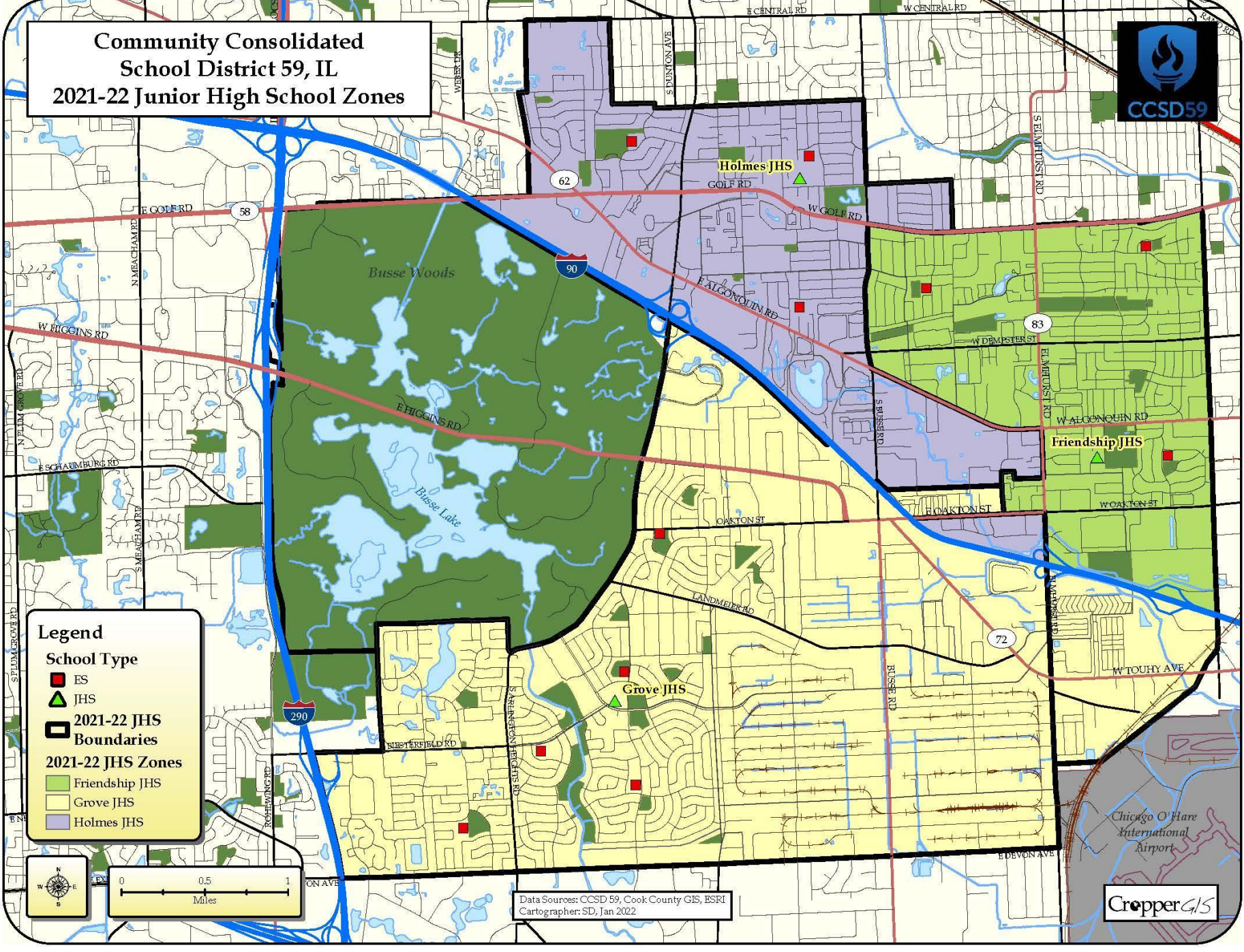
Imbalance in demographics above 15% from average for Grove JHS with Oasis Mobile Home and Oakton Rd. communities feeding into same school.



Junior High School: DRAFT Redistricting Option 4

- Repurposes Salt Creek to a Junior High School
- Frost / Jay ES pairing splits between Holmes and Friendship JHS.

Community Consolidated School District 59, IL 2021-22 Junior High School Zones



Data Sources: CCSD 59, Cook County GIS, ESRI
Cartographer: SD, Jan 2022

CropperGIS

Community Consolidated School District 59, IL JHS Pairing and Redistricting Option 4



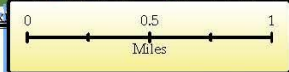
Legend

School Type

- ES
- JHS
- 2021-22 JHS Boundaries

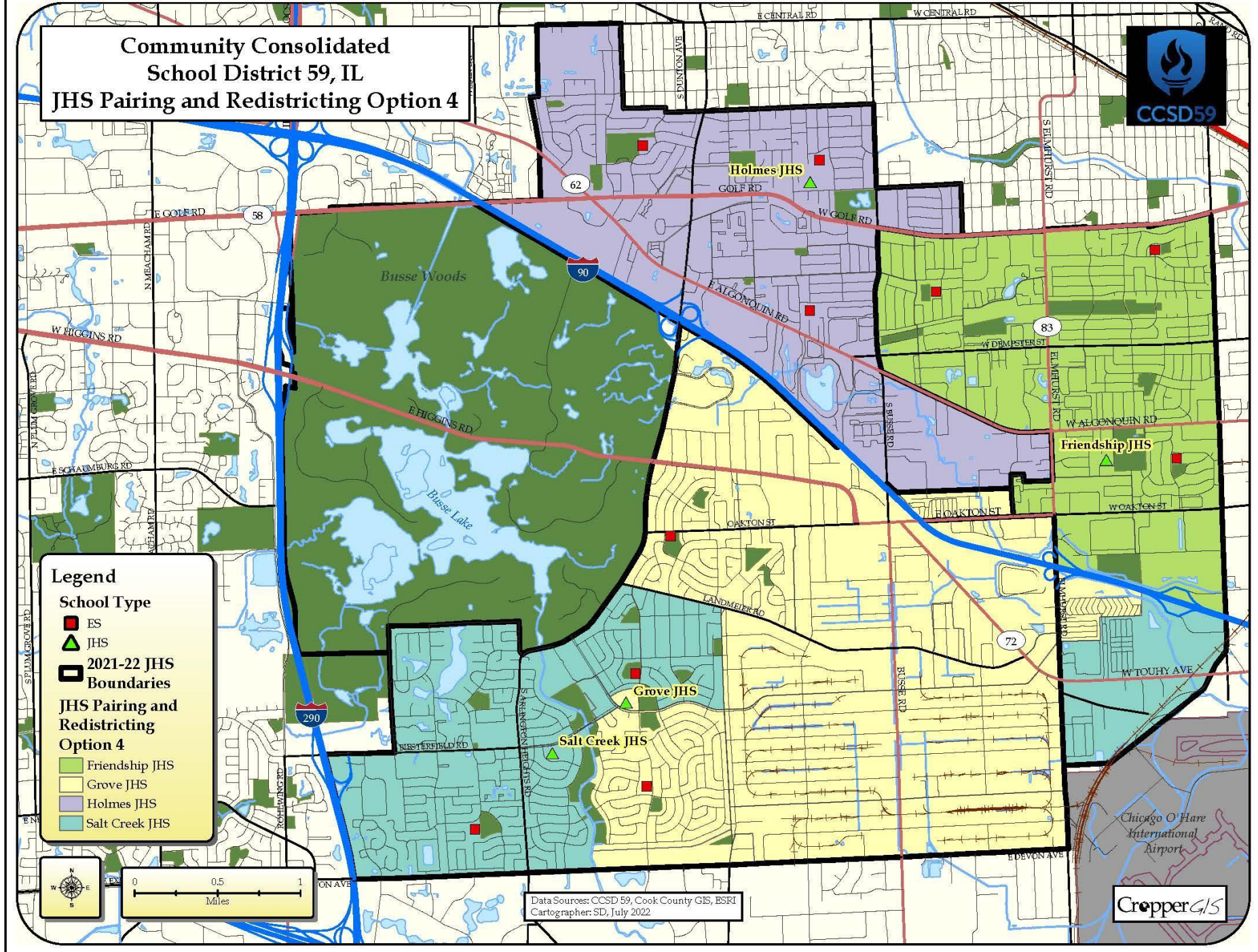
JHS Pairing and Redistricting Option 4

- Friendship JHS
- Grove JHS
- Holmes JHS
- Salt Creek JHS



Data Sources: CCSD 59, Cook County GIS, ESRI
Cartographer: SD, July 2022

CropperGIS





Junior High Schools: Option 4

		Pairing / Redistricting Option 4 - Live In		
Junior High School	2021-22 Capacity	Estimated Enrollment	Estimated Utilization	Estimated Utilization
Friendship JHS	813	612	75%	75%
Grove JHS	930	498	54%	54%
Holmes JHS	692	467	67%	67%
Salt Creek JHS	673	376	56%	56%
Total	3,108	1,953	63%	63%

Within 10%

Between 10-15%

Over/Under 15%

Splitting Frost/Jay paired school zone between Friendship and Holmes results in more balanced utilization.



Junior High Schools: Option 4

Within 10%
Between 10-15%
Over/Under 15%

Junior High School	2021-22 Enrollment by Race and Ethnicity							2021-22 Lunch Code			2021-22 Multi-Lingual and Special Ed	
	American Indian or AK Native	Asian	Black	Hispanic / Latino	Native Hawaiian or Other PI	White	Multi-Racial	Paid	Reduced	Free	Multi-Lingual	Special Ed
Friendship JHS	2%	17%	5%	32%	0%	41%	2%	50%	4%	45%	30%	11%
Grove JHS	1%	4%	2%	52%	0%	40%	2%	47%	5%	48%	35%	9%
Holmes JHS	4%	13%	6%	46%	0%	30%	2%	44%	4%	53%	37%	9%
Salt Creek JHS												
Total	2%	10%	4%	44%	0%	38%	2%	47%	4%	48%	34%	10%

Junior High School	Pairing and Redistricting Option 4 Race and Ethnicity							Pairing and Redistricting Option 4 Lunch Code			Pairing / Redistricting Option 4 M.L. and S.E.	
	American Indian or AK Native	Asian	Black	Hispanic / Latino	Native Hawaiian or Other PI	White	Multi-Racial	Paid	Reduced	Free	Multi-Lingual	Special Ed
Friendship JHS	2%	17%	5%	31%	0%	42%	2%	51%	4%	45%	30%	10%
Grove JHS	1%	2%	1%	63%	0%	31%	2%	37%	7%	56%	42%	9%
Holmes JHS	4%	13%	6%	46%	0%	29%	2%	43%	4%	53%	38%	11%
Salt Creek JHS	1%	5%	2%	38%	0%	52%	2%	60%	2%	39%	24%	9%
Total	2%	10%	4%	44%	0%	38%	2%	47%	4%	48%	34%	10%

Imbalance in demographics above 15% from average for Grove JHS with Oasis Mobile Home and Oakton Rd. communities feeding into same school.



Questions?