



Community Consolidated School District 59

Equity Task Force Meeting 2
September 8, 2022

Cropper *GIS*



2021-22 Capacity, Official Enrollment, Demographics, and Building Utilizations

The following document contains a series of tables of statistics for current schools and boundaries that are being evaluated, including enrollment, demographic, and utilization statistics. The current student enrollment numbers were derived from the district's 10/01/2021 student database. This document also contains the same set of statistics for two elementary school redistricting options currently being considered, a straight redistricting option that changes school boundaries but does not pair or close schools, and a pairing option. The pairing options closes Ridge and combines the remaining schools into K-2/3-5 pairs. The paired schools are listed adjacently in the tables and are combined with a black outline. Estimated enrollment is calculated using live-attend in the straight redistricting option and live-in in the pairing option. There is also a junior high school redistricting option that adjusts the boundaries but does not close any schools. Finally, this document contains a set of maps of current school boundaries and proposed boundaries for each redistricting option.

Glossary of Terms

Capacity - The number of students that can be safely accommodated in each physical school building.

Utilization - The total enrollment divided by the capacity, described as a percentage.

Live In students - Students residing inside of a school attendance boundary, regardless of where they attend school.

Live and Attend students - Students who attend school in the zones in which they reside.

Live Out Attend In students - Students that live outside of their attending school's zone boundary but reside within the school district boundary.

Out of District students - Students that live outside of the school district's boundary.

Unmatched students - Students not able to be located by the GIS.

Table Notes

Student counts are based on the 10/01/2021 CCSD 59 Student Database.

Students attending specialty schools are not included in the counts.

In the demographic tables, rounding can lead to total percentages of slightly over or under 100%.



2022-23 Enrollment and Utilization Forecast and 2021-22 to 2031-32 Elementary Utilization Forecast

2022-23 Enrollment and Utilization Forecast										2021-22 to 2031-32 Utilization Forecast											
Elementary School	2021-22 Capacity	KG	01	02	03	04	05	Total Enrolled	Enrolled Utilization		2021-22	2022-23	2023-24	2024-25	2025-26	2026-27	2027-28	2028-29	2029-30	2030-31	2031-32
Devonshire ES	467	55	56	51	50	56	68	336	72%	Enrollment	334	336	327	331	344	354	359	360	355	348	339
										Utilization	72%	72%	70%	71%	74%	76%	77%	77%	76%	75%	73%
Brentwood ES	492	71	73	73	66	71	67	421	86%	Enrollment	429	421	423	422	430	430	429	426	419	412	406
										Utilization	87%	86%	86%	86%	87%	87%	87%	87%	86%	84%	83%
Forest View ES	516	45	53	54	42	39	49	282	55%	Enrollment	287	282	270	268	265	250	239	229	223	217	217
										Utilization	56%	55%	52%	52%	51%	48%	46%	44%	43%	42%	42%
Juliette Low ES	688	50	48	48	37	49	36	268	39%	Enrollment	281	268	279	279	293	295	292	286	279	271	263
										Utilization	41%	39%	41%	41%	43%	43%	42%	42%	41%	39%	38%
John Jay ES	423	53	52	50	49	42	44	290	69%	Enrollment	296	290	284	277	263	247	235	224	213	201	187
										Utilization	70%	69%	67%	65%	62%	58%	56%	53%	50%	48%	44%
Robert Frost ES	497	75	45	39	49	50	43	301	61%	Enrollment	276	301	300	295	297	307	320	307	322	332	340
										Utilization	56%	61%	60%	59%	60%	62%	64%	62%	64%	67%	68%
Ridge ES	422	46	45	43	40	41	40	255	60%	Enrollment	250	255	259	263	268	269	269	269	269	269	269
										Utilization	59%	60%	61%	62%	64%	64%	64%	64%	64%	64%	64%
Rupley ES	540	54	50	56	50	56	54	320	59%	Enrollment	320	320	323	326	336	339	343	343	340	332	327
										Utilization	59%	59%	60%	60%	62%	63%	64%	64%	63%	61%	61%
Salt Creek ES	673	66	74	68	67	78	62	415	62%	Enrollment	423	415	414	391	380	377	370	367	373	383	393
										Utilization	63%	62%	62%	58%	56%	56%	55%	55%	55%	57%	58%
Admiral Byrd ES	438	57	59	56	52	52	61	337	77%	Enrollment	317	337	340	347	350	351	350	353	364	379	396
										Utilization	72%	77%	78%	79%	80%	80%	80%	81%	83%	87%	90%
Clearmont ES	497	64	66	82	73	56	81	422	85%	Enrollment	406	422	406	410	399	381	380	377	379	382	383
										Utilization	82%	85%	82%	82%	80%	77%	76%	76%	76%	77%	77%
District Totals:	5,653	636	621	620	575	590	605	3,647	65%	Enrollment	3,619	3,647	3,625	3,609	3,625	3,600	3,586	3,541	3,536	3,526	3,524
										Utilization	64%	64%	64%	64%	64%	64%	63%	63%	63%	62%	62%



2021-22 to 2031-32 Junior High Utilization Forecast

2021-22 to 2031-32 Utilization Forecast													
Junior High	2021-22 Capacity		2021-22	2022-23	2023-24	2024-25	2025-26	2026-27	2027-28	2028-29	2029-30	2030-31	2031-32
Friendship	813	Enrollment	618	589	570	562	541	523	516	549	562	566	549
		Utilization	76%	72%	70%	69%	67%	64%	63%	68%	69%	70%	68%
Grove	930	Enrollment	883	828	832	837	840	835	836	841	825	818	820
		Utilization	95%	89%	89%	90%	90%	90%	90%	90%	89%	88%	88%
Holmes	692	Enrollment	452	436	402	407	371	385	390	394	369	349	329
		Utilization	65%	63%	58%	59%	54%	56%	56%	57%	53%	50%	48%
District Totals:	2,435	Enrollment	1,953	1,853	1,804	1,806	1,752	1,743	1,742	1,784	1,756	1,733	1,698
		Utilization	80%	76%	74%	74%	72%	72%	72%	73%	72%	71%	70%

Utilization Color Key
Over 105%
96% to 105%
86% to 95%
76% to 85%
65% to 75%



2021-2022 Elementary School Enrollment and Utilization Statistics

Elementary School	2021-22 Capacity	2021-22 Enrollment and Utilization									2021-22 Enrolled Live-Attend				
		Grade Config.	KG	01	02	03	04	05	Current Enrollment	Current Utilization	Live-In*	Live and Attend-In	Live-Out and Attend-In	Out of District	Unmatched
Devonshire ES	467	K-5	41	52	51	57	65	68	334	72%	396	332	2		
Brentwood ES	492	K-5	72	75	69	73	68	72	429	87%	482	424	5		
Forest View ES	516	K-5	42	61	43	40	54	47	287	56%	336	283	2		2
Juliette Low ES	688	K-5	40	49	38	49	37	68	281	41%	288	261	20		
John Jay ES	423	K-5	48	56	50	45	46	51	296	70%	282	231	65		
Robert Frost ES	497	K-5	46	41	49	53	44	43	276	56%	329	272	4	1	
Ridge ES	422	K-5	47	44	39	41	41	38	250	59%	NA	NA	NA	2	
Rupley ES	540	K-5	48	53	50	56	54	59	320	59%	342	257	63	2	
Salt Creek ES	673	K-5	74	69	66	77	63	74	423	63%	470	378	45		
Admiral Byrd ES	438	K-5	45	55	51	50	60	56	317	72%	367	296	21		
Clearmont ES	497	K-5	59	82	74	59	82	50	406	82%	318	249	157	2	
Total	5,653		562	637	580	600	614	626	3,619	64%	3,610	2,983	384	7	2



Elementary School Current and DRAFT Option Enrollment and Utilization Statistics

Elementary School	2021-22 Capacity	2021-22 Enrollment and Utilization			DRAFT Option Enrollment and Utilization			
		Current Enrollment	Current Utilization	Trend	Grade Config.	Estimated Enrollment	Estimated Utilization	Trend
Devonshire ES	467	334	72%	▼	K-2	371	79%	▼
Brentwood ES	492	429	87%	▬	3-5	422	86%	▼
Forest View ES	516	287	56%	▬	K-2	376	73%	▲
Juliette Low ES	688	281	41%	▼	3-5	382	56%	▼
John Jay ES	423	296	70%	▬	K-2	339	80%	▲
Robert Frost ES	497	276	56%	▬	3-5	325	65%	▲
Ridge ES	422	250	59%	▲	NA*			
Rupley ES	540	320	59%	▼	K-2	383	71%	▬
Salt Creek ES	673	423	63%	▬	3-5	401	60%	▲
Admiral Byrd ES	438	317	72%	▼	K-2	310	71%	▼
Clearmont ES	497	406	82%	▲	3-5	310	62%	▼
Total	5,653	3,619	64%	▼		3,619	69%	▼

*Ridge serves as an ELC in this model.

Cells are color coded based on deviation from the standard percentage in each field. Percentages are rounded.

Within 10%
Between 10-15%
Over/Under 15%



2021-2022 Elementary School Demographic Statistics

Elementary School	2021-22 Race and Ethnicity							2021-22 Lunch Code			2021-22 Multi-Lingual and Special Ed	
	American Indian or AK Native	Asian	Black	Hispanic / Latino	Native Hawaiian or Other PI	White	Multi-Racial	Paid	Reduced	Free	Multi-Lingual	Special Ed
Devonshire ES	2%	16%	4%	30%	0%	45%	3%	51%	3%	46%	43%	10%
Brentwood ES	1%	24%	8%	34%	0%	30%	4%	50%	2%	47%	53%	9%
Forest View ES	1%	33%	10%	14%	0%	38%	4%	68%	1%	31%	33%	8%
Juliette Low ES	1%	9%	2%	53%	0%	33%	2%	42%	3%	55%	57%	18%
John Jay ES	1%	7%	6%	69%	0%	11%	6%	34%	2%	64%	63%	11%
Robert Frost ES	0%	8%	7%	46%	0%	35%	4%	43%	1%	56%	56%	12%
Ridge ES	0%	24%	2%	14%	0%	57%	3%	71%	1%	28%	28%	9%
Rupley ES	7%	7%	2%	55%	0%	27%	3%	36%	5%	59%	66%	31%
Salt Creek ES	2%	2%	1%	52%	0%	40%	3%	44%	2%	54%	52%	13%
Admiral Byrd ES	2%	2%	2%	71%	0%	22%	2%	36%	2%	62%	61%	11%
Clearmont ES	0%	2%	2%	14%	0%	78%	3%	61%	2%	37%	48%	9%
Total	2%	12%	4%	41%	0%	39%	3%	49%	2%	49%	51%	13%

Cells are color coded based on deviation from the average percentage in each field. Percentages are rounded.

Within 10%
Between 10-15%
Over/Under 15%

Elementary School	2021-22 Race and Ethnicity							2021-22 Lunch Code			2021-22 Multi-Lingual and Special Ed	
	American Indian or AK Native	Asian	Black	Hispanic / Latino	Native Hawaiian or Other PI	White	Multi-Racial	Paid	Reduced	Free	Multi-Lingual	Special Ed
Devonshire ES	2%	16%	4%	30%	0%	45%	3%	51%	3%	46%	43%	10%
Brentwood ES	1%	24%	8%	34%	0%	30%	4%	50%	2%	47%	53%	9%
Forest View ES	1%	33%	10%	14%	0%	38%	4%	68%	1%	31%	33%	8%
Juliette Low ES	1%	9%	2%	53%	0%	33%	2%	42%	3%	55%	57%	18%
John Jay ES	1%	7%	6%	69%	0%	11%	6%	34%	2%	64%	63%	11%
Robert Frost ES	0%	8%	7%	46%	0%	35%	4%	43%	1%	56%	56%	12%
Ridge ES	0%	24%	2%	14%	0%	57%	3%	71%	1%	28%	28%	9%
Rupley ES	7%	7%	2%	55%	0%	27%	3%	36%	5%	59%	66%	31%
Salt Creek ES	2%	2%	1%	52%	0%	40%	3%	44%	2%	54%	52%	13%
Admiral Byrd ES	2%	2%	2%	71%	0%	22%	2%	36%	2%	62%	61%	11%
Clearmont ES	0%	2%	2%	14%	0%	78%	3%	61%	2%	37%	48%	9%
Total	2%	12%	4%	41%	0%	39%	3%	49%	2%	49%	51%	13%



Elementary School DRAFT Option Demographic Statistics

Elementary School	Grade Config.	DRAFT Option Race and Ethnicity							DRAFT Option Lunch Code			DRAFT Option M.L. and S.E.	
		American Indian or AK Native	Asian	Black	Hispanic / Latino	Native Hawaiian or Other PI	White	Multi-Racial	Paid	Reduced	Free	Multi-Lingual	Special Ed
Devonshire ES	K-2	1%	16%	4%	33%	0%	41%	5%	49%	4%	47%	50%	13%
Brentwood ES	3-5	2%	18%	5%	33%	0%	40%	2%	55%	3%	42%	49%	13%
Forest View ES	K-2	2%	20%	5%	37%	0%	33%	4%	47%	1%	51%	56%	14%
Juliette Low ES	3-5	1%	18%	5%	42%	0%	32%	2%	52%	2%	46%	47%	10%
John Jay ES	K-2	1%	14%	7%	45%	0%	28%	5%	44%	1%	56%	61%	14%
Robert Frost ES	3-5	1%	13%	7%	49%	0%	26%	3%	39%	2%	59%	60%	13%
Ridge ELC	NA*												
Rupley ES	K-2	4%	3%	2%	38%	0%	50%	3%	49%	3%	48%	52%	12%
Salt Creek ES	3-5	3%	5%	2%	42%	0%	44%	2%	51%	3%	46%	44%	14%
Admiral Byrd ES	K-2	1%	3%	2%	48%	0%	45%	2%	50%	2%	49%	48%	12%
Clearmont ES	3-5	2%	4%	2%	45%	0%	45%	3%	49%	2%	49%	46%	10%
Total		2%	12%	4%	41%	0%	39%	3%	49%	2%	49%	51%	13%

Cells are color coded based on deviation from the average percentage in each field. Percentages are rounded.

Within 10%
Between 10-15%
Over/Under 15%

*Ridge serves as an ELC in this model.

Elementary School	Grade Config.	DRAFT Option Race and Ethnicity							DRAFT Option Lunch Code			DRAFT Option M.L. and S.E.	
		American Indian or AK Native	Asian	Black	Hispanic / Latino	Native Hawaiian or Other PI	White	Multi-Racial	Paid	Reduced	Free	Multi-Lingual	Special Ed
Devonshire ES	K-2	1%	16%	4%	33%	0%	41%	5%	49%	4%	47%	50%	13%
Brentwood ES	3-5	2%	18%	5%	33%	0%	40%	2%	55%	3%	42%	49%	13%
Forest View ES	K-2	2%	20%	5%	37%	0%	33%	4%	47%	1%	51%	56%	14%
Juliette Low ES	3-5	1%	18%	5%	42%	0%	32%	2%	52%	2%	46%	47%	10%
John Jay ES	K-2	1%	14%	7%	45%	0%	28%	5%	44%	1%	56%	61%	14%
Robert Frost ES	3-5	1%	13%	7%	49%	0%	26%	3%	39%	2%	59%	60%	13%
Ridge ELC	NA*												
Rupley ES	K-2	4%	3%	2%	38%	0%	50%	3%	49%	3%	48%	52%	12%
Salt Creek ES	3-5	3%	5%	2%	42%	0%	44%	2%	51%	3%	46%	44%	14%
Admiral Byrd ES	K-2	1%	3%	2%	48%	0%	45%	2%	50%	2%	49%	48%	12%
Clearmont ES	3-5	2%	4%	2%	45%	0%	45%	3%	49%	2%	49%	46%	10%
Total		2%	12%	4%	41%	0%	39%	3%	49%	2%	49%	51%	13%

*Ridge serves as an ELC in this model.



2021-22 Junior High School Enrollment and Utilization Statistics

Junior High School	2021-22 Capacity	2021-22 Enrollment and Utilization		2021-22 Enrolled Live-Attend				
		Estimated Enrollment	Estimated Utilization	Live-In	Live and Attend-In	Live-Out and Attend-In	Out of District	Unmatched
Friendship JHS	813	618	76%	611	598	20	1	
Grove JHS	930	883	95%	873	859	24		
Holmes JHS	692	452	65%	466	450	2	2	
Total	2,435	1,953	80%	1,950	1,907	46	3	0

Junior High School DRAFT Option Enrollment and Utilization Statistics

Junior High School	2021-22 Capacity	2021-22 Enrollment and Utilization			DRAFT Option Enrollment and Utilization		
		Estimated Enrollment	Estimated Utilization	Trend	Estimated Enrollment	Estimated Utilization	Trend
Friendship JHS	813	618	76%	▼	738	91%	▼
Grove JHS	930	883	95%	▼	814	88%	▼
Holmes JHS	692	452	65%	▼	401	58%	▼
Total	3,108	1,953	80%	▼	1,953	80%	▼

Cells are color coded based on deviation from the average percentage in each field. Percentages are rounded.

Within 10%
Between 10-15%
Over/Under 15%



2021-22 Junior High School Demographic Statistics

Junior High School	2021-22 Race and Ethnicity							2021-22 Lunch Code			2021-22 Multi-Lingual and Special Ed	
	American Indian or AK Native	Asian	Black	Hispanic / Latino	Native Hawaiian or Other PI	White	Multi-Racial	Paid	Reduced	Free	Multi-Lingual	Special Ed
Friendship JHS	2%	17%	5%	32%	0%	41%	2%	50%	4%	45%	30%	11%
Grove JHS	1%	4%	2%	52%	0%	40%	2%	47%	5%	48%	35%	9%
Holmes JHS	4%	13%	6%	46%	0%	30%	2%	44%	4%	53%	37%	9%
Total	2%	10%	4%	44%	0%	38%	2%	47%	4%	48%	34%	10%

Junior High School	2021-22 Race and Ethnicity							2021-22 Lunch Code			2021-22 Multi-Lingual and Special Ed	
	American Indian or AK Native	Asian	Black	Hispanic / Latino	Native Hawaiian or Other PI	White	Multi-Racial	Paid	Reduced	Free	Multi-Lingual	Special Ed
Friendship JHS	2%	17%	5%	32%	0%	41%	2%	50%	4%	45%	30%	11%
Grove JHS	1%	4%	2%	52%	0%	40%	2%	47%	5%	48%	35%	9%
Holmes JHS	4%	13%	6%	46%	0%	30%	2%	44%	4%	53%	37%	9%
Total	2%	10%	4%	44%	0%	38%	2%	47%	4%	48%	34%	10%

Cells are color coded based on deviation from the average percentage in each field. Percentages are rounded.

Within 10%
Between 10-15%
Over/Under 15%



Junior High School DRAFT Option Demographic Statistics

Junior High School	DRAFT Option Race and Ethnicity							DRAFT Option Lunch Code			DRAFT Option M.L. and S.E.	
	American Indian or AK Native	Asian	Black	Hispanic / Latino	Native Hawaiian or Other PI	White	Multi-Racial	Paid	Reduced	Free	Multi-Lingual	Special Ed
Friendship JHS	2%	17%	5%	36%	0%	38%	2%	48%	5%	47%	33%	11%
Grove JHS	1%	4%	2%	50%	0%	42%	2%	49%	5%	47%	31%	8%
Holmes JHS	4%	11%	6%	49%	0%	28%	1%	43%	3%	53%	40%	10%
Total	2%	10%	4%	44%	0%	38%	2%	47%	4%	48%	34%	10%

Junior High School DRAFT Option Demographic Statistics

Junior High School	DRAFT Option Race and Ethnicity							DRAFT Option Lunch Code			DRAFT Option M.L. and S.E.	
	American Indian or AK Native	Asian	Black	Hispanic / Latino	Native Hawaiian or Other PI	White	Multi-Racial	Paid	Reduced	Free	Multi-Lingual	Special Ed
Friendship JHS	2%	17%	5%	36%	0%	38%	2%	48%	5%	47%	33%	11%
Grove JHS	1%	4%	2%	50%	0%	42%	2%	49%	5%	47%	31%	8%
Holmes JHS	4%	11%	6%	49%	0%	28%	1%	43%	3%	53%	40%	10%
Total	2%	10%	4%	44%	0%	38%	2%	47%	4%	48%	34%	10%

Cells are color coded based on deviation from the average percentage in each field. Percentages are rounded.

Within 10%
Between 10-15%
Over/Under 15%



Elementary School Program Codes

The following section contains tables of each elementary school with counts of program codes by grade level. It is important to note that these are counts of program codes and not individual students, as each student may have more than one code assigned to their student ID.

Program Code Key

CCIP- Cross-Categorical Instructional Program: Recommending removal as it is a JH 6-8 grade program

ELS - Educational Life Skills: A special education program in which student learning is focused on teaching functional skills such as personal health and safety, communication, functional academics, recreation, and community participation.

One Way Dual Language Spanish: A language development program that supports Spanish speaking students to become bilingual, bi-cultural, and bi-literate. For example, students whose primary language is Spanish would learn in English and Spanish together in a one-way dual language program model.

Two Way Dual Language Spanish: A language development program that supports both Spanish speaking students and students with another home language to become bilingual, bi-cultural, and bi-literate. For example, a combination of primary Spanish-speaking and English-speaking students would learn together in both languages.

One Way Dual Language Polish: A language development program that supports students who are primarily Polish speaking to become bilingual, bi-cultural, and bi-literate.

LOP - Learning Opportunity Program: A currently discontinued special education program that supported students with significant academic needs

ESL - English as a Second Language: Students who are ESL qualify for English as a Second Language services. In CCSD59, students who qualify for ESL services, and are not in a dual language program, receive ESL instruction.

TDP - Talent Development Program: Our Talent Development Program (TDP) serves students in grades 3-5 who require enrichment services in the areas of reading and math.

2021-22 Elementary School Program Codes

Admiral Byrd ES							
Program	Grade						K-5 Total
	K	1	2	3	4	5	
ELS							0
LOP							0
One Way Dual Language Spanish	20	33	27	27	38	28	173
Two Way Dual Language Spanish							0
One Way Dual Language Polish							0
ESL	1						1
TDP	NA	NA	NA	6	15	15	36
General Education	20	20	18	12	12	12	94

Brentwood ES							
Program	Grade						K-5 Total
	K	1	2	3	4	5	
ELS							0
LOP							0
One Way Dual Language Spanish	19	16	15	14	16	16	96
Two Way Dual Language Spanish							0
One Way Dual Language Polish							0
ESL	25	25	18	22	18	14	122
TDP	NA	NA	NA	15	12	15	42
General Education	28	34	35	24	23	25	169

Clearmont ES							
Program	Grade						K-5 Total
	K	1	2	3	4	5	
ELS							0
LOP							0
One Way Dual Language Spanish							0
Two Way Dual Language Spanish							0
One Way Dual Language Polish	30	35	29	23	22	9	148
ESL	5	13	9	8	11	3	49
TDP	NA	NA	NA	10	20	11	41
General Education	24	33	33	21	32	29	172

2021-22 Elementary School Program Codes Continued

Devonshire ES							
Program	Grade						K-5 Total
	K	1	2	3	4	5	
ELS							0
LOP							0
One Way Dual Language Spanish	5	7	7	8	18	11	56
Two Way Dual Language Spanish							0
One Way Dual Language Polish							0
ESL	12	13	13	13	12	18	81
TDP	NA	NA	NA	7	17	12	36
General Education	23	31	31	28	20	26	159

Forest View ES							
Program	Grade						K-5 Total
	K	1	2	3	4	5	
ELS							0
LOP							0
One Way Dual Language Spanish							0
Two Way Dual Language Spanish							0
One Way Dual Language Polish							0
ESL	21	18	16	11	15	7	88
TDP	NA	NA	NA	13	20	11	44
General Education	21	43	25	16	20	29	154

John Jay ES							
Program	Grade						K-5 Total
	K	1	2	3	4	5	
ELS							0
LOP							0
One Way Dual Language Spanish	12	15	22	13	17	18	97
Two Way Dual Language Spanish	22	20	19	16	15	19	111
One Way Dual Language Polish							0
ESL	3	7	5	7	8	3	33
TDP	NA	NA	NA	10	10	13	33
General Education	11	14	4	6	3	7	45

2021-22 Elementary School Program Codes Continued

Juliette Low ES							
Program	Grade						K-5 Total
	K	1	2	3	4	5	
ELS							0
LOP		3		3	2	3	11
One Way Dual Language Spanish	7	7	9	10	9	16	58
Two Way Dual Language Spanish	19	18	16	17	9	18	97
One Way Dual Language Polish							0
ESL	6	7	4	9	7	9	42
TDP	NA	NA	NA	11	5	12	28
General Education	8	15	9	9	9	19	69

Ridge ES							
Program	Grade						K-5 Total
	K	1	2	3	4	5	
ELS							0
LOP							0
One Way Dual Language Spanish							0
Two Way Dual Language Spanish							0
One Way Dual Language Polish							0
ESL	16	11	11	15	7	8	68
TDP	NA	NA	NA	7	10	15	32
General Education	30	33	28	20	25	18	154

Robert Frost ES							
Program	Grade						K-5 Total
	K	1	2	3	4	5	
ELS							0
LOP							0
One Way Dual Language Spanish	9	14	20	25	16	16	100
Two Way Dual Language Spanish	1					1	2
One Way Dual Language Polish							0
ESL	15	8	10	7	10	8	58
TDP	NA	NA	NA	9	13	10	32
General Education	21	19	19	12	9	10	90

2021-22 Elementary School Program Codes Continued

Rupley ES							
Program	Grade						K-5 Total
	K	1	2	3	4	5	
ELS	11	10	13	10	9	11	64
LOP							0
One Way Dual Language Spanish	21	22	20	20	23	17	123
Two Way Dual Language Spanish		1					1
One Way Dual Language Polish							0
ESL	19	13	12	14	11	16	85
TDP	NA	NA	NA	5	11	6	22
General Education	3	16	12	17	11	20	79

Salt Creek ES							
Program	Grade						K-5 Total
	K	1	2	3	4	5	
ELS							0
LOP							0
One Way Dual Language Spanish	24	20	18	25	17	18	122
Two Way Dual Language Spanish	24	21	24	20	22	22	133
One Way Dual Language Polish							0
ESL	6	6	6	7	4	10	39
TDP	NA	NA	NA	14	17	13	44
General Education	20	22	18	17	13	14	104

Elementary School DRAFT Option Program Codes

Admiral Byrd ES (K-2) / Clearmont ES (3-5)									
Program	Grade								
	K	1	2	K-2 Total	3	4	5	3-5 Total	K-5 Total
ELS	1	1	2	4	1			1	5
LOP				0				0	0
One Way Dual Language Spanish	20	29	27	76	29	36	27	92	168
Two Way Dual Language Spanish	5	4	6	15	3	7	2	12	27
One Way Dual Language Polish	5	7	8	20	8	7	2	17	37
ESL	8	15	13	36	7	10	4	21	57
TDP	NA	NA	NA	NA	12	29	20	61	61
General Education	44	54	49	147	29	42	39	110	257

Devonshire ES (K-2) / Brentwood (3-5)									
Program	Grade								
	K	1	2	K-2 Total	3	4	5	3-5 Total	K-5 Total
ELS	2	2	3	7	4	3	5	12	19
LOP		2		2		1	1	2	4
One Way Dual Language Spanish	21	23	22	66	19	34	25	78	144
Two Way Dual Language Spanish	4	4	5	13	5	2	4	11	24
One Way Dual Language Polish	9	9	6	24	7	6	2	15	39
ESL	27	31	28	86	34	30	37	101	187
TDP	NA	NA	NA	NA	20	31	26	77	77
General Education	47	64	62	173	53	40	52	145	318

Forest View (K-2) / Juliette Low ES (3-5)									
Program	Grade								
	K	1	2	K-2 Total	3	4	5	3-5 Total	K-5 Total
ELS	4	2	3	9		1	1	2	11
LOP				0		1		1	1
One Way Dual Language Spanish	22	15	21	58	29	17	29	75	133
Two Way Dual Language Spanish	28	21	21	70	20	15	24	59	129
One Way Dual Language Polish	4	4	2	10	2	2	1	5	15
ESL	37	32	26	95	19	25	20	64	159
TDP	NA	NA	NA	NA	32	30	29	91	91
General Education	35	66	38	139	29	31	56	116	255

Elementary School DRAFT Option Program Codes (Continued)

John Jay ES (K-2) / Robert Frost (3-5)									
Program	Grade								
	K	1	2	K-2 Total	3	4	5	3-5 Total	K-5 Total
ELS	1	4	3	8	3	2	2	7	15
LOP		1		1	2		1	3	4
One Way Dual Language Spanish	21	28	37	86	39	31	31	101	187
Two Way Dual Language Spanish	15	15	11	41	10	11	14	35	76
One Way Dual Language Polish	3	4	4	11	2	2		4	15
ESL	35	32	22	89	26	24	17	67	156
TDP	NA	NA	NA	NA	24	23	27	74	74
General Education	38	42	31	111	23	18	24	65	176

Rupley (K-2) / Salt Creek (3-5)									
Program	Grade								
	K	1	2	K-2 Total	3	4	5	3-5 Total	K-5 Total
ELS	3	1	2	6	2	3	3	8	14
LOP				0	1		1	2	2
One Way Dual Language Spanish	33	39	31	103	26	36	28	90	193
Two Way Dual Language Spanish	14	16	16	46	15	11	16	42	88
One Way Dual Language Polish	9	11	9	29	4	5	4	13	42
ESL	22	11	15	48	27	14	18	59	107
TDP	NA	NA	NA	NA	19	37	31	87	87
General Education	45	54	53	152	48	46	38	132	284

2021-22 Junior High School Program Codes

Friendship JHS				
Program	Grade			
	6	7	8	6-8 Total
CCIP	9	6	10	25
ELS				0
One Way Dual Language Spanish	35	28	37	100
Two Way Dual Language Spanish				0
ESL	42	26	32	100
TDP	34			34
General Education	82	143	143	368

Grove JHS				
Program	Grade			
	6	7	8	6-8 Total
CCIP				0
ELS	3	8	9	20
One Way Dual Language Spanish	76	63	101	240
Two Way Dual Language Spanish	17	15	18	50
ESL	17	39	26	82
TDP	32			32
General Education	116	169	169	454

Holmes JHS				
Program	Grade			
	6	7	8	6-8 Total
CCIP				0
ELS				0
One Way Dual Language Spanish	44	55	57	156
Two Way Dual Language Spanish		1		1
ESL	17	13	16	46
TDP	22			22
General Education	40	85	94	219

Junior High School DRAFT Option Program Codes

Friendship JHS				
Program	Grade			6-8 Total
	6	7	8	
CCIP	4	3	5	12
ELS	2	7	4	13
One Way Dual Language Spanish	51	45	59	155
Two Way Dual Language Spanish			1	1
ESL	46	32	38	116
TDP	40			40
General Education	84	158	167	409

Grove JHS				
Program	Grade			6-8 Total
	6	7	8	
CCIP	4	3	3	10
ELS	1		3	4
One Way Dual Language Spanish	61	54	85	200
Two Way Dual Language Spanish	16	13	14	43
ESL	16	29	24	69
TDP	32			32
General Education	113	170	166	449

Holmes JHS				
Program	Grade			6-8 Total
	6	7	8	
CCIP	1		2	3
ELS		1	2	3
One Way Dual Language Spanish	43	47	51	141
Two Way Dual Language Spanish	1	3	3	7
ESL	14	17	12	43
TDP	16			16
General Education	41	69	73	183



Background

Consolidated Community School District 59 is in the process of analyzing equity throughout the district. To provide additional information to the stakeholders to determine the adherence of various DRAFT Options to equity goals, a scoring matrix has been devised.

Each option was scored on the following categories:

- Utilization
- Race and Ethnicity
- Free and Reduced Lunch
- Multi-Lingual and Special Education
- Transportation

These are data points to complement existing tables and Committee and Planning Team deliberations and are simply meant to provide additional information. Scores are available for the existing attendance zones at CCSD59 as well as the existing DRAFT Options.

Utilization Score

- Goal: describe the extent to which an option distributes students evenly across schools to balance utilization.
- Each school receives a point value based on the difference between its utilization and the option utilization district average.
 - The points were given as follows: 0-5% difference=0; 6-10% difference=1; 11-15% difference=2; 16-20% difference=3; 21-25% difference=4, 26-30% difference=5, and over 30% difference=6.
 - For example, if School A has a utilization of 80% and the average for the option is 70%, that school will receive 1 point.
- To assign a score for the option, all points are added together to get a sum for the option.
 - For example, if Schools A through E have 1, 0, 0, 3, 2 points respectively, the score for the option would equal 6.

Demographic Diversity Scores

- Goal: identify the extent to which schools represent the demographic composition of the district as a whole.
- Each school receives a point value based on the difference between its demographic distribution percentage of students and the average demographic distribution percentage of students across the district.
 - The points were given as follows: 0-5% difference=0; 6-10% difference=1; 11-15% difference=2; 16-20% difference=3; 21-25% difference=4, 26-30% difference=5, and over 30% difference=6.
 - For example, if School A has 30% Hispanic students and CCSD59 has a district average of 41% Hispanic students, then School A will receive 2 points.
- Each demographic category is assigned a separate score. The categories are: Race and Ethnicity, Free and Reduced Lunch, and Multi-Lingual and Special Education.
- To assign a score for each option, all points are added together to get a sum for each category.

Transportation Scores

- Travel distances for each student to each school were calculated using GIS software, road data from Cook County, and the geocode of students based on the student database provided by CCSD59.
- The average travel distance for each school was then calculated, as shown in the tables below, and then the average for the current zones and the DRAFT Option zones was calculated.
- Travel distances for each school were then compared to the district average for the current zones and the DRAFT Option.
 - Points are given as follows: Less than district average = -1 point, 0 to .5 miles greater than district average = 0 points, more than .5 greater than district average = 1 point.
 - Points were then added up for the DRAFT Option and the current zones.
 - For example, if the average distance for Byrd is 3.3372 miles and the district average is 1.5817 miles in the current zones, Byrd would receive 1 point.

Reference Keys

Percentage Difference from District Average							
Difference	0-5%	6-10%	11-15%	16-20%	21-25%	26-30%	Over 30%
Points Added	0	1	2	3	4	5	6



Mileage Difference vs District Average			
Difference	Less than District Average	0-.5 Miles Greater than District Average	More than .5 Miles Greater than District Average
Points Added	-1	0	1

Transportation Tables

Elementary School	K-5 Average Distance to School in Miles		
	2021-22 Distance	DRAFT Option Grade Config.	DRAFT Option Distance
Devonshire ES	0.7705	K-2	1.1520
Brentwood ES	1.0401	3-5	1.2635
Forest View ES	0.9592	K-2	1.6095
Juliette Low ES	2.0704	3-5	2.0242
John Jay ES	0.6870	K-2	0.9420
Robert Frost ES	0.5218	3-5	0.7074
Ridge ES	2.2285	NA*	
Rupley ES	1.9703	K-2	1.7241
Salt Creek ES	2.1078	3-5	2.0709
Admiral Byrd ES	3.3372	K-2	2.5647
Clearmont ES	1.7066	3-5	1.9580
Total Average	1.5817		1.6016

Junior High School	6-8 Average Distance to School in Miles	
	2021-22 Distance	DRAFT Option Distance
Friendship JHS	1.3026	1.4443
Grove JHS	2.0298	1.9198
Holmes JHS	1.3421	1.5138
Total Average	1.5582	1.6260

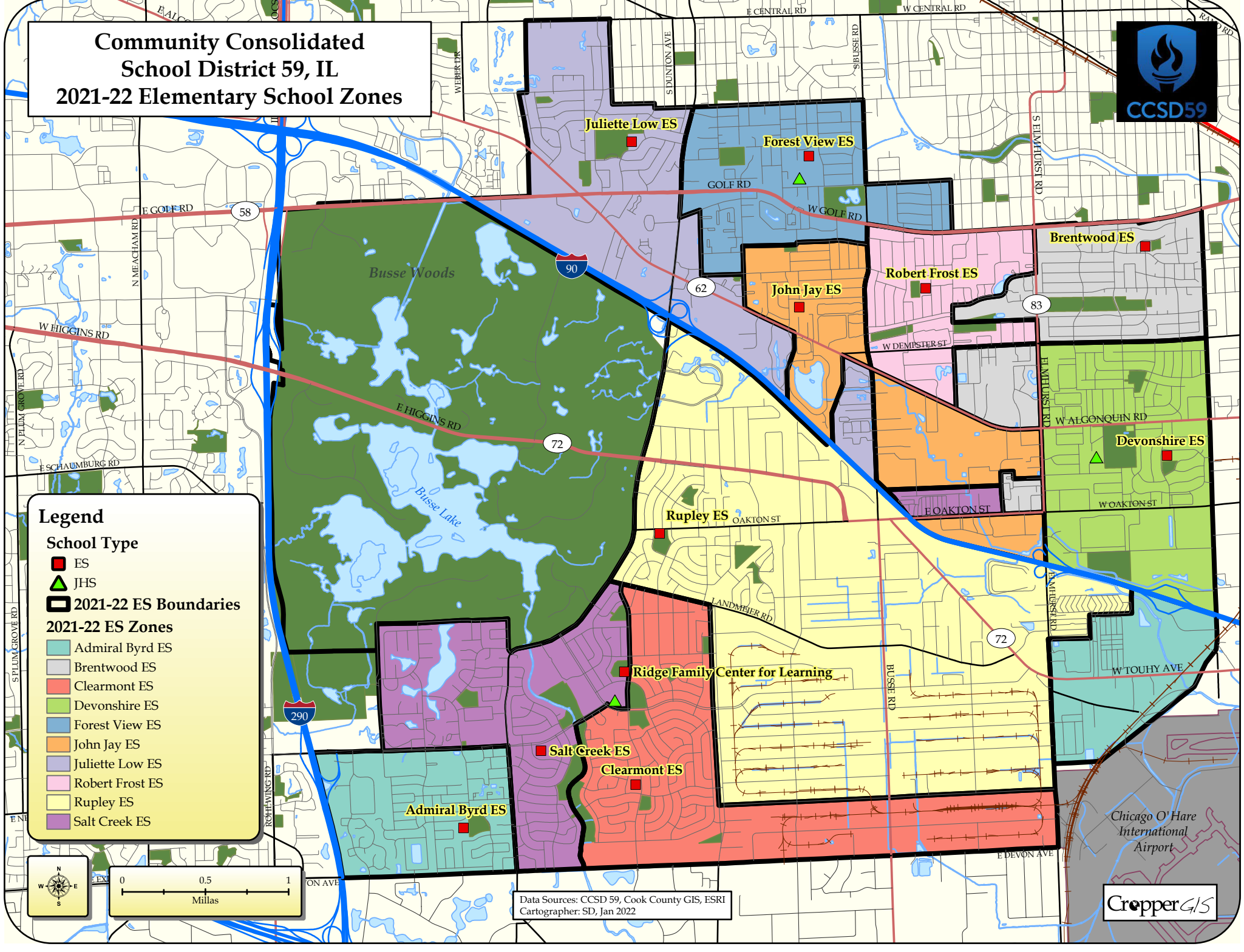
*Ridge serves as an ELC in this model.

Scoring Tables

Option Score Categories	Elementary Schools	
	2021-22	DRAFT Option
Utilization Score	16	11
Race and Ethnicity Score	71	22
Lunch Code Score	33	6
Multi-Lingual and Special Ed Score	18	5
Transportation	-2	-3
ES Option Score	136	41

Option Score Categories	Junior High Schools	
	2021-22	DRAFT Option
Utilization Score	4	7
Race and Ethnicity Score	6	5
Lunch Code Score	0	0
Multi-Lingual and Special Ed Score	0	1
Transportation	-2	-2
JHS Option Score	8	11

Community Consolidated School District 59, IL 2021-22 Elementary School Zones



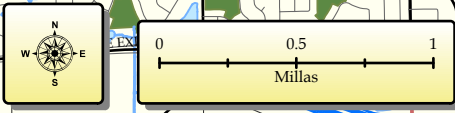
Legend

School Type

- ES
- ▲ JHS
- 2021-22 ES Boundaries

2021-22 ES Zones

- Admiral Byrd ES
- Brentwood ES
- Clearmont ES
- Devonshire ES
- Forest View ES
- John Jay ES
- Juliette Low ES
- Robert Frost ES
- Rupley ES
- Salt Creek ES

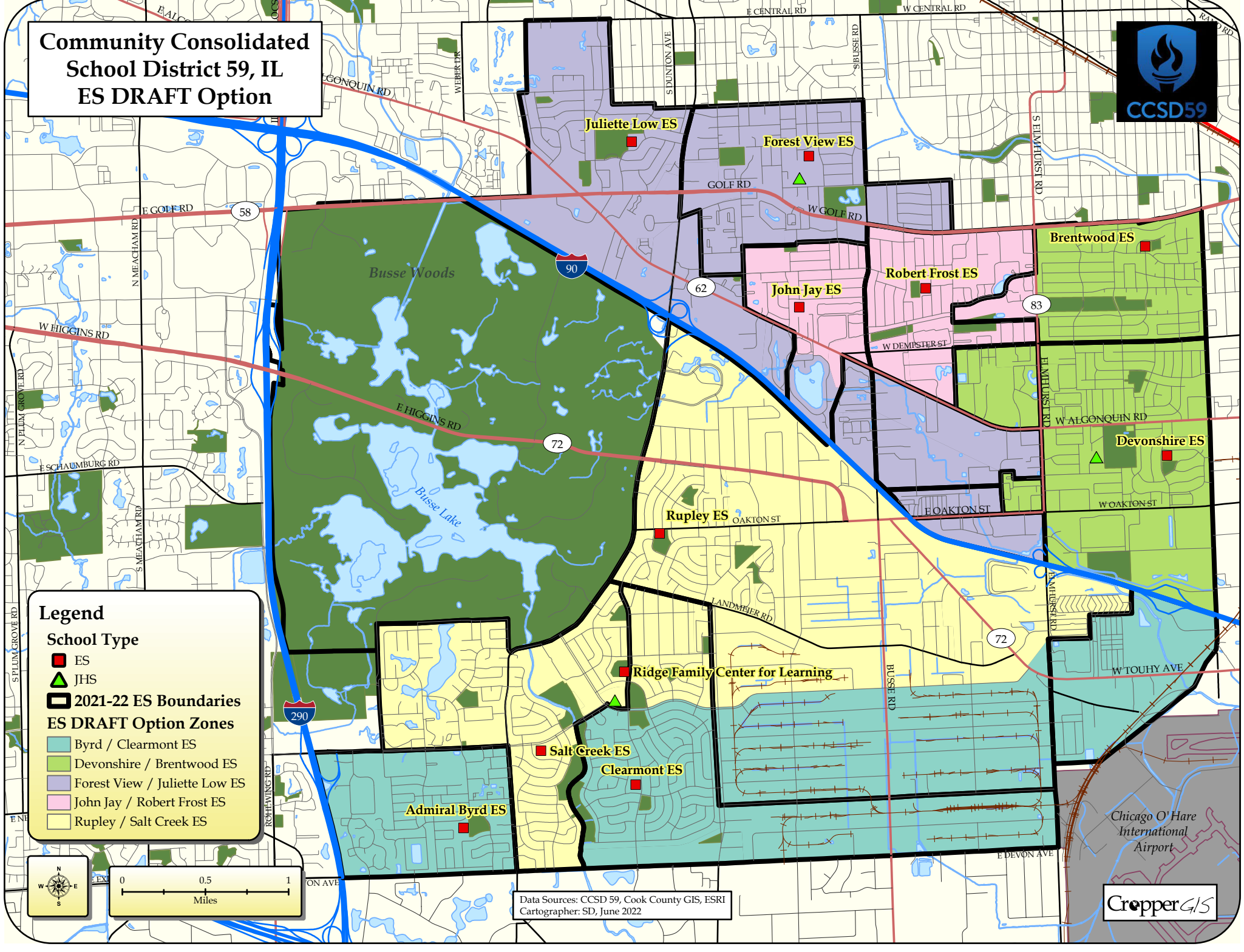


Data Sources: CCSD 59, Cook County GIS, ESRI
Cartographer: SD, Jan 2022



Chicago O'Hare
International
Airport

Community Consolidated School District 59, IL ES DRAFT Option



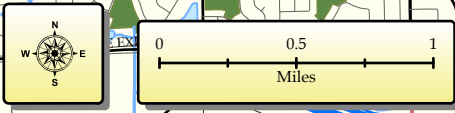
Legend

School Type

- ES
- ▲ JHS
- 2021-22 ES Boundaries

ES DRAFT Option Zones

- Byrd / Clearmont ES
- Devonshire / Brentwood ES
- Forest View / Juliette Low ES
- John Jay / Robert Frost ES
- Rupley / Salt Creek ES

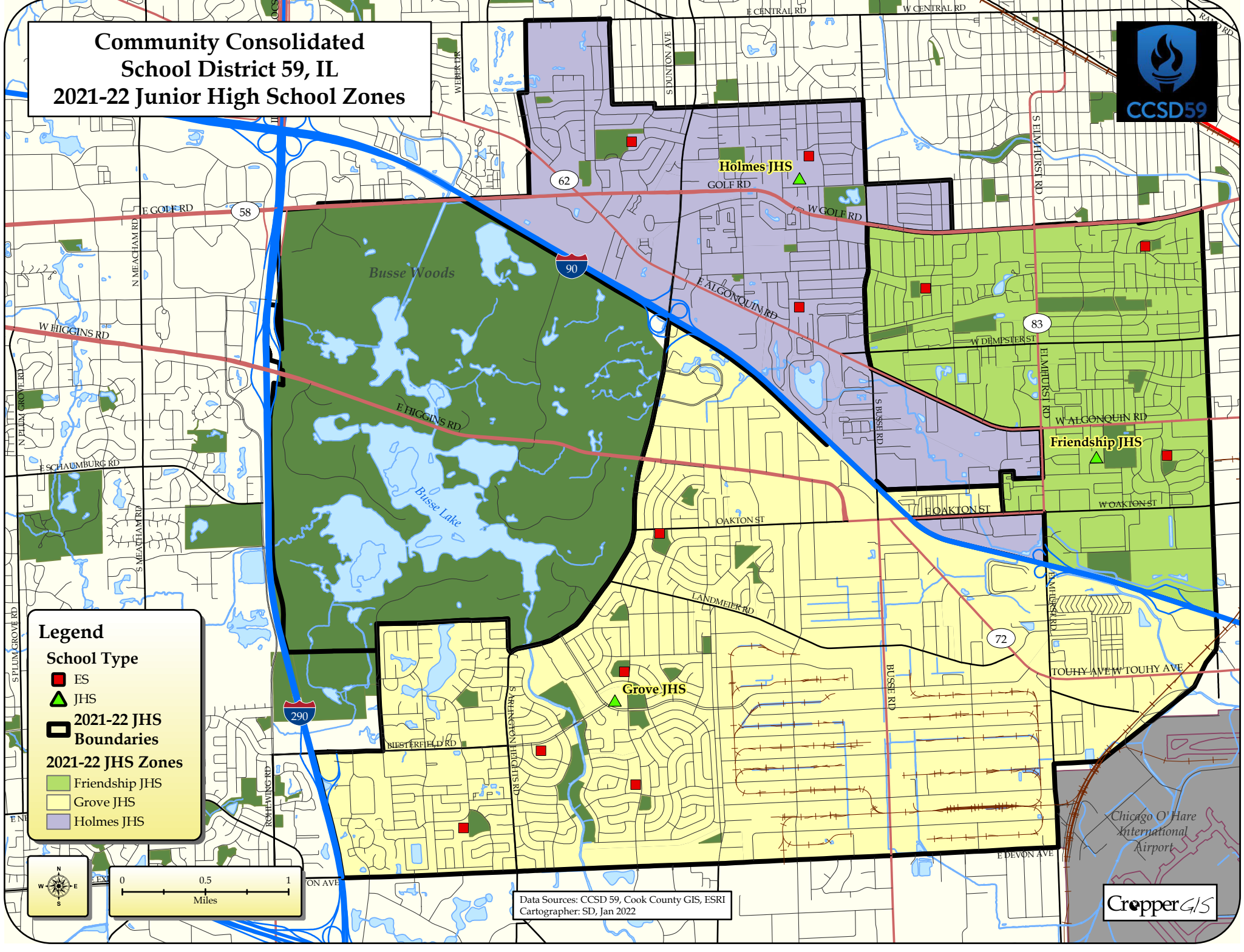


Data Sources: CCSD 59, Cook County GIS, ESRI
Cartographer: SD, June 2022



Chicago O'Hare International Airport

Community Consolidated School District 59, IL 2021-22 Junior High School Zones



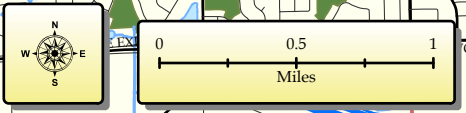
Legend

School Type

- ES
- ▲ JHS
- 2021-22 JHS Boundaries

2021-22 JHS Zones

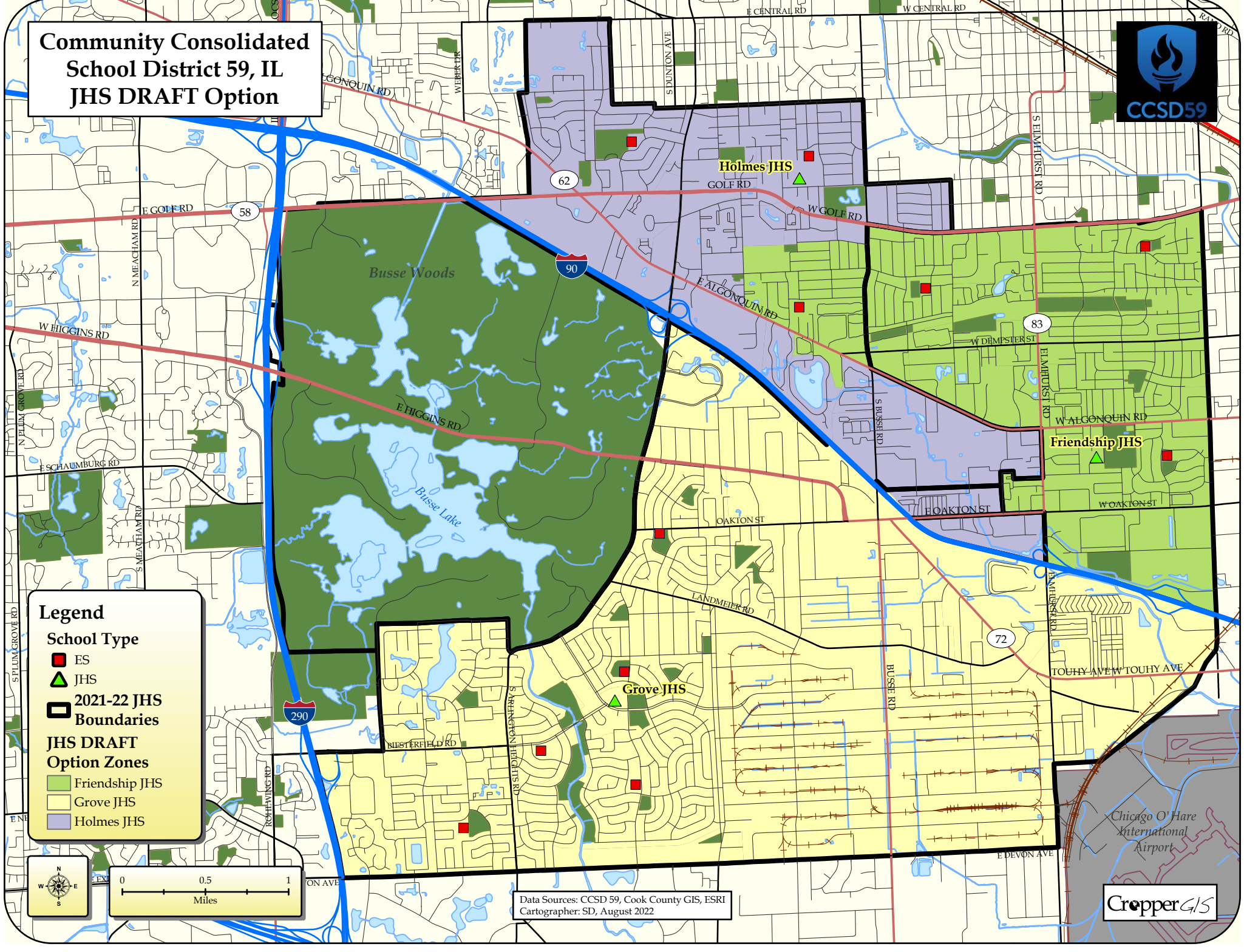
- Friendship JHS
- Grove JHS
- Holmes JHS



Data Sources: CCSD 59, Cook County GIS, ESRI
Cartographer: SD, Jan 2022



Community Consolidated School District 59, IL JHS DRAFT Option



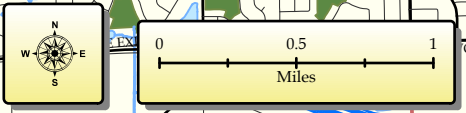
Legend

School Type

- ES
- ▲ JHS
- 2021-22 JHS Boundaries

JHS DRAFT Option Zones

- Friendship JHS
- Grove JHS
- Holmes JHS



Data Sources: CCSD 59, Cook County GIS, ESRI
Cartographer: SD, August 2022

