



Consolidated Community School District 59, IL

Equity Task Force Meeting 2

September 8, 2022

CropperGIS



Process & Timeline for Equity Study

	May '22	June '22	July '22	Aug. '22	Sept. '22	Oct. '22	Nov. '22
<i>Data Collection</i>							
<i>Data Analysis / Assimilation</i>							
<i>Baseline Options Development</i>							
<i>Internal Planning Team Work (1-2 meetings per month)</i>							
<u><i>Public Advisory Committee Meeting 1</i></u> <i>- Review Background Data and DRAFT Options</i>				8/22			
<u><i>Public Advisory Committee Meeting 2</i></u> <i>- DRAFT Options Review</i>		<div style="border: 1px solid black; padding: 2px; display: inline-block;">We are here</div> →			9/8		
<u><i>Public Advisory Committee Meeting 3</i></u> <i>- DRAFT Options Review</i>					9/22		
<u><i>Public Advisory Committee Meeting 4</i></u> <i>- Final considerations regarding DRAFT Options</i>						10/3	
<i>Anticipated Presentation of Final Recommendations to the Board of Education</i>						10/10	



Challenges that CCSD59 faces regarding imbalances in School utilization and Demographics



Challenges with Imbalance: Elementary Utilization

2021 -22 Enrollment and Utilization				
Elementary School	2021-22 Capacity	Current Enrollment	Current Utilization	Trend
Devonshire ES	467	334	72%	▼
Brentwood ES	492	429	87%	▬
Forest View ES	516	287	56%	▬
Juliette Low ES	688	281	41%	▼
John Jay ES	423	296	70%	▬
Robert Frost ES	497	276	56%	▬
Ridge ES	422	250	59%	▲
Rupley ES	540	320	59%	▼
Salt Creek ES	673	423	63%	▬
Admiral Byrd ES	438	317	72%	▼
Clearmont ES	497	406	82%	▲
Total	5,653	3,619	64%	▼

Within 10%
Between 10-15%
Over/Under 15%

Three (3) schools currently operating 15% above or below the district average in terms of utilization.



Challenges with Imbalance: Elementary School Demographics

Within 10%
Between 10-15%
Over/Under 15%

Elementary School	2021-22 Enrollment by Race and Ethnicity							2021-22 Lunch Code			2021-22 Multi-Lingual and Special Ed	
	American Indian or AK Native	Asian	Black	Hispanic / Latino	Native Hawaiian or Other PI	White	Multi-Racial	Paid	Reduced	Free	Multi-Lingual	Special Ed
Devonshire ES	2%	16%	4%	30%	0%	45%	3%	51%	3%	46%	43%	10%
Brentwood ES	1%	24%	8%	34%	0%	30%	4%	50%	2%	47%	53%	9%
Forest View ES	1%	33%	10%	14%	0%	38%	4%	68%	1%	31%	33%	8%
Juliette Low ES	1%	9%	2%	53%	0%	33%	2%	42%	3%	55%	57%	18%
John Jay ES	1%	7%	6%	69%	0%	11%	6%	34%	2%	64%	63%	11%
Robert Frost ES	0%	8%	7%	46%	0%	35%	4%	43%	1%	56%	56%	12%
Ridge ES	0%	24%	2%	14%	0%	57%	3%	71%	1%	28%	28%	9%
Rupley ES	7%	7%	2%	55%	0%	27%	3%	36%	5%	59%	66%	31%
Salt Creek ES	2%	2%	1%	52%	0%	40%	3%	44%	2%	54%	52%	13%
Admiral Byrd ES	2%	2%	2%	71%	0%	22%	2%	36%	2%	62%	61%	11%
Clearmont ES	0%	2%	2%	14%	0%	78%	3%	61%	2%	37%	48%	9%
Total	2%	12%	4%	41%	0%	39%	3%	49%	2%	49%	51%	13%

- 6 of the 11 total elementary schools in the district currently operate over/under 15% average in terms of demographics.
- 5 schools are outside of the 15% threshold in several demographic categories.
- 10 of the 11 total elementary schools operate between 10-15% over/under the district average in demographics.
- 1 elementary school operates within 10% of the district average in all demographics.



Challenges with Imbalance: Junior High Schools

Within 10%
Between 10-15%
Over/Under 15%

Junior High School	2021-22 Capacity	2021-22 Enrollment and Utilization			2021-22 Enrolled Live-Attend				
		Estimated Enrollment	Estimated Utilization	Trend	Live-In	Live and Attend-In	Live-Out and Attend-In	Out of District	Unmatched
Friendship JHS	813	618	76%	▼	611	598	20	1	
Grove JHS	930	883	95%	▼	873	859	24		
Holmes JHS	692	452	65%	▼	466	450	2	2	
Total	2,435	1,953	80%	▼	1,950	1,907	46	3	0

Junior High School	2021-22 Enrollment by Race and Ethnicity							2021-22 Lunch Code			2021-22 Multi-Lingual and Special Ed	
	American Indian or AK Native	Asian	Black	Hispanic / Latino	Native Hawaiian or Other PI	White	Multi-Racial	Paid	Reduced	Free	Multi-Lingual	Special Ed
Friendship JHS	2%	17%	5%	32%	0%	41%	2%	50%	4%	45%	30%	11%
Grove JHS	1%	4%	2%	52%	0%	40%	2%	47%	5%	48%	35%	9%
Holmes JHS	4%	13%	6%	46%	0%	30%	2%	44%	4%	53%	37%	9%
Total	2%	10%	4%	44%	0%	38%	2%	47%	4%	48%	34%	10%

Junior High Schools are balanced in terms of demographics, and there is a slight imbalance in utilization.

Grove JHS is at 95% utilization when the district utilization for JHS is 80%.



Responses / follow-up to questions and conversations from Equity Task Force Meeting 1



Responses / follow-up to questions posed

A series of questions were asked during the first Equity Task Force meeting. Questions include:

Question: Could we consider moving 6th grade to some elementary schools with space to help reduce the utilization at Grove JHS?

Answer: Any move that is being considered should be uniform across all schools in the district. This allows the delivery of programs and general education to be streamlined with the same offerings at every school.

All elementary schools cannot take 6th grade as doing so will create other imbalances in utilization at both elementary and junior high schools, so moving 6th grade out of Grove JHS is not being considered.



Responses / follow-up to questions posed

Question: A few of the options assume Salt Creek as a Junior High School. Has CCSD59 considered Rupley instead?

Answer: Salt Creek was being considered as a JHS because its capacity (673) is big enough to possibly support a Junior High School. Rupley has a capacity of 540 which is too small in comparison to the other Junior High Schools in the district. Therefore Rupley cannot serve as a Junior High School without some substantial capital improvements to increase the capacity of the building.

Also, Salt Creek is not being considered as a JHS anymore as it results in Grove JHS being too low utilization, and data indicates that it is not an ideal solution for CCSD59.



Responses / follow-up to questions posed

Question: Can we use this opportunity to expand the Pre-K program that is offered at CCSD59?

Answer: There were lots of conversations around the table about Pre-K and what to do with it. In the latest option that is being considered, Ridge is assumed to operate as an Early Learning Center, which will provide additional opportunities to families who are interested in Pre-K programs.



Responses / follow-up to questions posed

Question: How is the district's stability predicted? What is the data source and how was it acquired?

Answer: A demographic study was recently completed, which studied the total population within the district. Forecasted enrollment and utilization is included in materials shared with the ETF and available on the district's Equity website. Other information will be provided to the ETF for discussion, including information about program offerings and locations.



Responses / follow-up to questions posed

Question: Rupley and Salt Creek share Oasis students currently. Why is this not reflected on the map?

Answer: Oasis is currently zoned to Rupley, but students are overflowed to Salt Creek when there is not available capacity at Rupley at the particular grade level or program.



Responses / follow-up to questions posed

Question: What happens to our dual language programs? Especially Polish?

Answer: Program locations and offerings are certainly part of the focus in this effort. The goal is to ensure that programs are offered at schools and/or areas of the district in as equitable of a manner as possible.

Current programs are not offered at all schools which is under review and consideration by CCSD59 to change.



Responses / follow-up to questions posed

Question: Does the data include families that have children living in the district but not attending public schools?

Answer: There is limited data on numbers of students living in the district that do not attend public school, although the demographic study did forecast total population of the district and its current attendance areas. Part of that study was forecasting total school-aged population change by various age groups.



Responses / follow-up to questions posed

Question: Should the various criteria that are being evaluated (utilization, demographics) be prioritized? No option will make all cells green so where is the main focus?

Answer: It is always best practice to make changes that bring schools closer to adherence to our criteria if at all possible. No plan will be perfect and there will always be cases where imbalance still exists.

The best plan will be one that provides as equitable of a solution as possible without creating other challenges that do not exist, knowing that any plan will not be perfect but better than the current schools and zones.

Any other questions from Meeting 1 not listed tonight that need follow-up?



Review of new material created



Information about programs

Data on programs is currently being developed and reviewed. Information includes the number of students living within each boundary by program by grade:

Admiral Byrd ES (K-2) / Clearmont ES (3-5)									
Program	Grade								
	K	1	2	K-2 Total	3	4	5	3-5 Total	K-5 Total
ELS	1	1	2	4	1			1	5
LOP				0				0	0
One Way Dual Language Spanish	20	29	27	76	29	36	27	92	168
Two Way Dual Language Spanish	5	4	6	15	3	7	2	12	27
One Way Dual Language Polish	5	7	8	20	8	7	2	17	37
ESL	8	15	13	36	7	10	4	21	57
TDP	NA	NA	NA	NA	12	29	20	61	61
General Education	44	54	49	147	29	42	39	110	257

Devonshire ES (K-2) / Brentwood (3-5)									
Program	Grade								
	K	1	2	K-2 Total	3	4	5	3-5 Total	K-5 Total
ELS	2	2	3	7	4	3	5	12	19
LOP		2		2		1	1	2	4
One Way Dual Language Spanish	21	23	22	66	19	34	25	78	144
Two Way Dual Language Spanish	4	4	5	13	5	2	4	11	24
One Way Dual Language Polish	9	9	6	24	7	6	2	15	39
ESL	27	31	28	86	34	30	37	101	187
TDP	NA	NA	NA	NA	20	31	26	77	77
General Education	47	64	62	173	53	40	52	145	318

Forest View (K-2) / Juliette Low ES (3-5)									
Program	Grade								
	K	1	2	K-2 Total	3	4	5	3-5 Total	K-5 Total
ELS	4	2	3	9		1	1	2	11
LOP				0		1		1	1
One Way Dual Language Spanish	22	15	21	58	29	17	29	75	133
Two Way Dual Language Spanish	28	21	21	70	20	15	24	59	129
One Way Dual Language Polish	4	4	2	10	2	2	1	5	15
ESL	37	32	26	95	19	25	20	64	159
TDP	NA	NA	NA	NA	32	30	29	91	91
General Education	35	66	38	139	29	31	56	116	255



Objectively evaluating improvement: Option Scoring

- We have implemented a method to objectively evaluate the current boundaries and any option that is being developed.
- This will enable the ETF, CCSD59 staff, and public to see how options measure in relation to the current boundaries.
- The current and options are scored based on how close they are to district averages in various categories.
 - Attributes that are scored includes utilization, race/ethnicity, free/reduced lunch, multi-lingual, and special education.
- All schools are assessed in the categories, and points are added depending on how far it deviates from the district averages.
 - The higher the score, the poorer the boundaries are performing in terms of imbalances from district averages.

Percentage Difference from District Average							
Difference	0-5%	6-10%	11-15%	16-20%	21-25%	26-30%	Over 30%
Points Added	0	1	2	3	4	5	6



Objectively evaluating improvement: Option Scoring

- Transportation is also assessed in this model.
- Using GIS software and data from Cook County and CCSD59, a matrix was created that determined the distance of each student from each school.
- Average student travel distance per school and for the district was computed for the current zones and the DRAFT Option.
- The current zones and the DRAFT Option were assigned points based on how each school's average distance compared to the overall average in each scenario.

Mileage Difference vs District Average			
Difference	Less than District Average	0-.5 Miles Greater than District Average	More than .5 Miles Greater than District Average
Points Added	-1	0	1



Objectively evaluating improvement: Option Scoring

	Elementary Schools	
Option Score Categories	2021-22	DRAFT Option
Utilization Score	16	11
Race and Ethnicity Score	71	22
Lunch Code Score	33	6
Multi-Lingual and Special Ed Score	18	5
Transportation	-2	-3
ES Option Score	136	41

	Junior High Schools	
Option Score Categories	2021-22	DRAFT Option
Utilization Score	4	7
Race and Ethnicity Score	6	5
Lunch Code Score	0	0
Multi-Lingual and Special Ed Score	0	1
Transportation	-2	-2
JHS Option Score	8	11



Review of further options explored

- Additional options were explored to determine if they are viable, including:
 - Redistricting while maintaining the same grade configurations.
 - One option explored was aggressive in terms of discontinuing 3 schools to achieve better utilization.
 - Another option was explored that did not close any schools but did assume Ridge as Early Learning Center.
 - Both redistricting options required very extensive cutting of boundaries and most communities would be split through residential areas.
 - Many communities would need to attend schools much farther from their closest school.
 - Due to the impact on communities to achieve a redistricting only solution, these options are not moving forward for recommendation.



What is still on the table and not?

- Prior options that assumed Salt Creek to operate as a Junior High School are not moving forward for recommendation.
- Former redistricting options are not moving forward for recommendation.
- The former redistricting / pairing option 1 has been determined as the best one to continue to explore.
 - Best balance of utilization and demographics
 - Assumes Ridge as Early Learning Center
 - Option will continue to be studied as program impacts continue to be studied.

Remember that everything that is being done is still considered DRAFT! Anything that has been discussed could still be considered.

The focus will always be to recommend a plan that best meets the needs of all children within the district.

Nothing is final until the School Board votes on a plan

Community Consolidated
School District 59, IL
Elementary Redistricting Exercise

DRAFT EXERCISE



**NOT A VIABLE OR
RECOMMENDED OPTION**

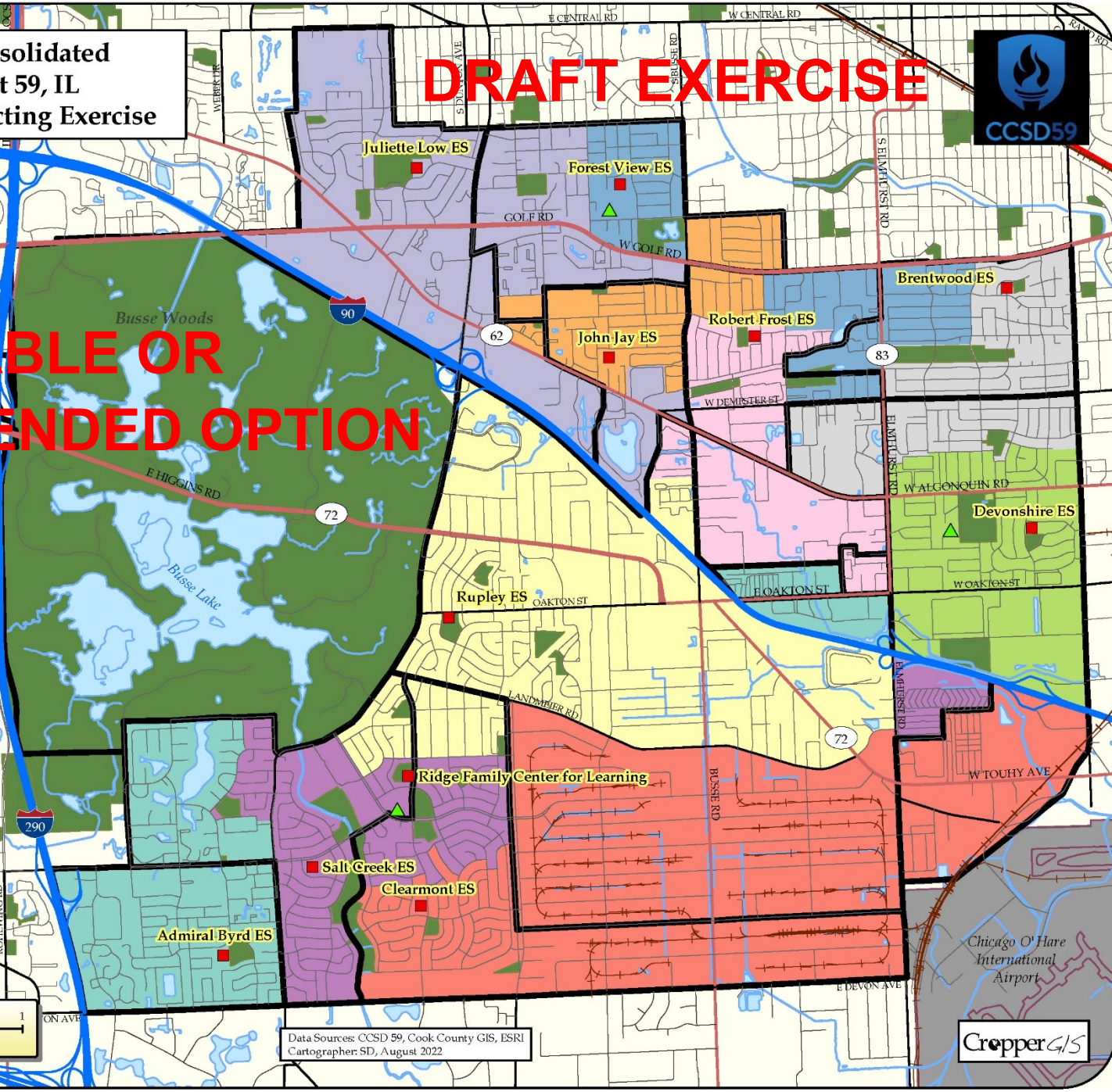
Legend

School Type

- ES (Red square)
- JHS (Green triangle)
- 2021-22 ES Boundaries (Thick black line)

ES Redistricting Option Zones

- Admiral Byrd ES (Light blue)
- Brentwood ES (Light purple)
- Clearmont ES (Red)
- Devonshire ES (Light green)
- Forest View ES (Blue)
- John Jay ES (Orange)
- Juliette Low ES (Purple)
- Robert Frost ES (Pink)
- Rupley ES (Yellow)
- Salt Creek ES (Dark purple)



Data Sources: CCSD 59, Cook County GIS, ESRI
Cartographer: SD, August 2022





Elementary Schools: Redistricting EXERCISE

DRAFT EXERCISE

Redistricting Exercise Enrollment and Utilization					
Elementary School	2021-22 Capacity	Grade Config.	Estimated Enrollment	Estimated Utilization	Trend
Devonshire ES	467	K-2	271	58%	▼
Brentwood ES	492	3-5	372	76%	▼
Forest View ES	516	K-2	332	64%	▬
Juliette Low ES	688	3-5	444	65%	▬
John Jay ES	423	K-2	264	62%	▬
Robert Frost ES	497	3-5	318	64%	▬
Ridge ES	422	NA*			
Rupley ES	540	K-2	399	74%	▼
Salt Creek ES	673	3-5	509	76%	▼
Admiral Byrd ES	438	K-2	323	74%	▲
Clearmont ES	497	3-5	387	78%	▼
Total	5,653		3,619	69%	▼

Within 10%
Between 10-15%
Over/Under 15%

*Ridge serves as an ELC in this model.

Utilization is greatly improved, but zones with unusual shapes must be created as some schools are in very densely populated locations, such as Jay, and others are in more isolated locations, farther away from areas of higher density, such as Low.



Elementary Schools: Redistricting EXERCISE

DRAFT EXERCISE

Within 10%
Between 10-15%
Over/Under 15%

Elementary School	Redistricting Exercise Race and Ethnicity							Redistricting Exercise Lunch Code			Redistricting Exercise M.L. and Special Ed	
	American Indian or AK Native	Asian	Black	Hispanic / Latino	Native Hawaiian or Other PI	White	Multi-Racial	Paid	Reduced	Free	Multi-Lingual	Special Ed
Devonshire ES	3%	15%	5%	35%	0%	39%	3%	51%	4%	44%	49%	11%
Brentwood ES	1%	11%	2%	35%	0%	46%	4%	49%	2%	49%	49%	15%
Forest View ES	1%	18%	8%	33%	0%	40%	2%	50%	1%	49%	53%	10%
Juliette Low ES	1%	25%	9%	30%	0%	31%	4%	54%	2%	44%	43%	11%
John Jay ES	1%	17%	3%	41%	0%	33%	5%	56%	2%	42%	55%	15%
Robert Frost ES	1%	20%	8%	35%	1%	30%	5%	49%	3%	48%	55%	14%
Ridge ELC*												
Rupley ES	2%	6%	4%	45%	0%	42%	2%	45%	2%	53%	53%	16%
Salt Creek ES	4%	3%	1%	49%	0%	40%	3%	47%	3%	50%	53%	12%
Admiral Byrd ES	1%	5%	2%	37%	0%	53%	3%	50%	1%	48%	44%	11%
Clearmont ES	2%	2%	2%	63%	0%	31%	2%	38%	2%	59%	60%	12%
Total	2%	12%	4%	41%	0%	39%	3%	49%	2%	49%	51%	13%

*Ridge serves as an ELC in this model.

Aggressively cutting new zones can drastically improve demographic balance without pairing schools, but at the expense of breaking up established communities.



Elementary Schools: Redistricting EXERCISE

DRAFT EXERCISE

Option Score Categories	Elementary Schools	
	2021-22	Redistricting Exercise
Utilization Score	16	7
Race and Ethnicity Score	71	29
Lunch Code Score	33	8
Multi-Lingual and Special Ed Score	18	3
Transportation	-2	-3
ES Option Score	136	44

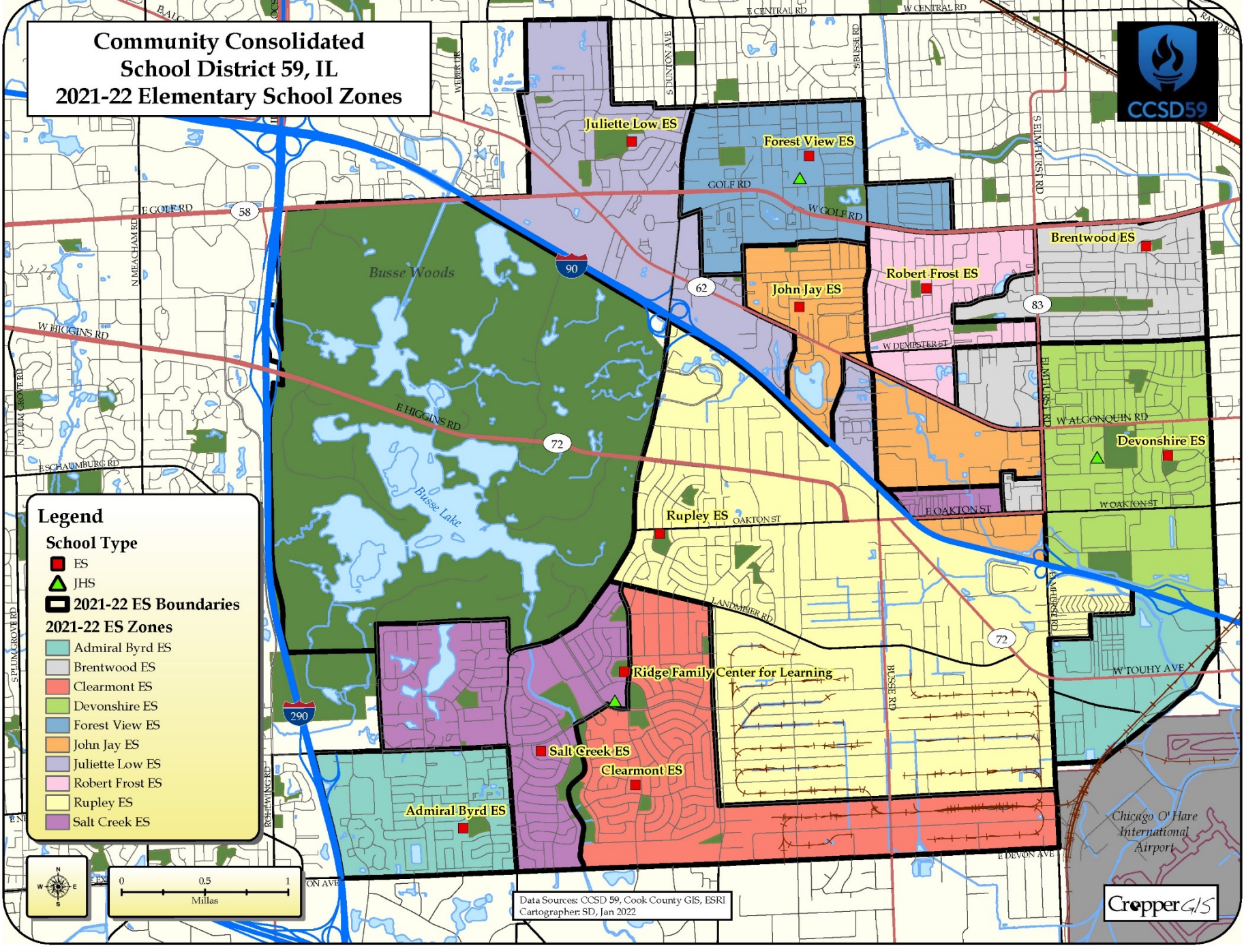
- Scoring is very similar to, though slightly worse than, the pairing option.
- Both the redistricting exercise and the pairing option score significantly better than the current zones.



Elementary School: DRAFT Option

- Moves boundary lines and pairs schools
- Estimates count all CCSD59 students living within each zone per the grade level
- Pairs
 - Devonshire (K-2) / Brentwood (3-5)
 - Forest View (K-2) / Low (3-5)
 - Jay (K-2) / Frost (3-5),
 - Rupley (K-2) / Salt Creek (3-5)
 - Byrd (K-2) / Clearmont (3-5)
- Ridge assumed to be location for an Early Learning Center.
- Improves demographic balance

Community Consolidated School District 59, IL 2021-22 Elementary School Zones



Legend

School Type

- ES
- ▲ JHS
- ▭ 2021-22 ES Boundaries

2021-22 ES Zones

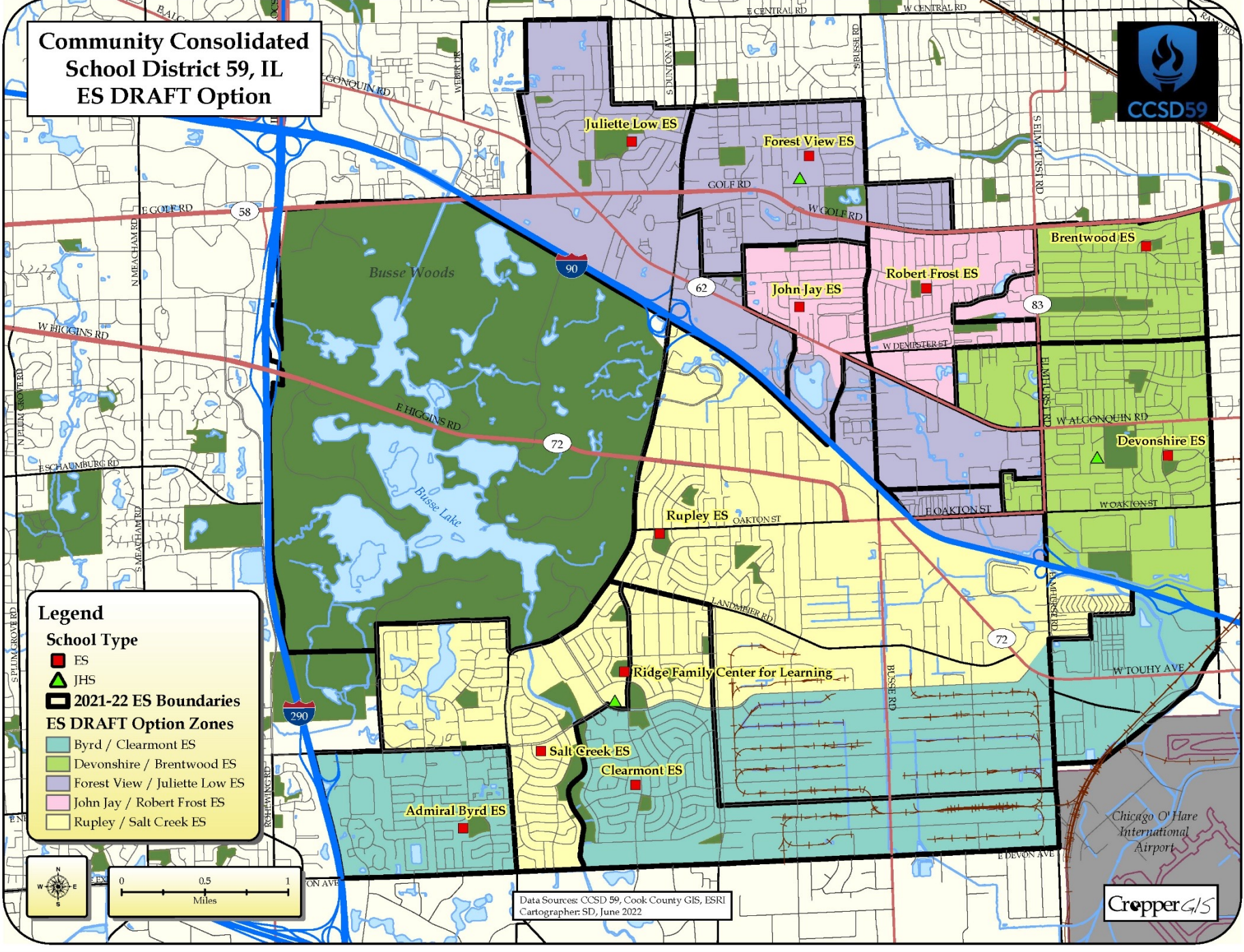
- Admiral Byrd ES
- Brentwood ES
- Clearmont ES
- Devonshire ES
- Forest View ES
- John Jay ES
- Juliette Low ES
- Robert Frost ES
- Rupley ES
- Salt Creek ES

Data Sources: CCSD 59, Cook County GIS, ESRI
Cartographer: SD, Jan 2022



Chicago O'Hare
International
Airport

Community Consolidated School District 59, IL ES DRAFT Option



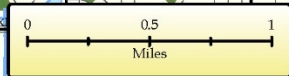
Legend

School Type

- ES
- ▲ JHS
- 2021-22 ES Boundaries

ES DRAFT Option Zones

- Byrd / Clearmont ES
- Devonshire / Brentwood ES
- Forest View / Juliette Low ES
- John Jay / Robert Frost ES
- Rupley / Salt Creek ES



Data Sources: CCSD 59, Cook County GIS, ESRI
Cartographer: SD, June 2022





Elementary Schools: DRAFT Option

ES DRAFT Option Enrollment and Utilization					
Elementary School	2021-22 Capacity	Grade Config.	Estimated Enrollment	Estimated Utilization	Trend
Devonshire ES	467	K-2	371	79%	▼
Brentwood ES	492	3-5	422	86%	▼
Forest View ES	516	K-2	376	73%	▲
Juliette Low ES	688	3-5	382	56%	▼
John Jay ES	423	K-2	339	80%	▲
Robert Frost ES	497	3-5	325	65%	▲
Ridge ELC	422	NA*			
Rupley ES	540	K-2	383	71%	▬
Salt Creek ES	673	3-5	401	60%	▲
Admiral Byrd ES	438	K-2	310	71%	▼
Clearmont ES	497	3-5	310	62%	▼
Total	5,653		3,619	69%	▼

Within 10%
Between 10-15%
Over/Under 15%

*Ridge serves as an ELC in this model.

Brentwood ES at 86% utilization but overall schools are closer to district average utilization.



Elementary Schools: DRAFT Option

Within 10%
Between 10-15%
Over/Under 15%

Elementary School	Grade Config.	ES DRAFT Option Race and Ethnicity							ES DRAFT Option Lunch Code			ES DRAFT Option M.L. and S.E.	
		American Indian or AK Native	Asian	Black	Hispanic / Latino	Native Hawaiian or Other PI	White	Multi-Racial	Paid	Reduced	Free	Multi-Lingual	Special Ed
Devonshire ES	K-2	1%	16%	4%	33%	0%	41%	5%	49%	4%	47%	50%	13%
Brentwood ES	3-5	2%	18%	5%	33%	0%	40%	2%	55%	3%	42%	49%	13%
Forest View ES	K-2	2%	20%	5%	37%	0%	33%	4%	47%	1%	51%	56%	14%
Juliette Low ES	3-5	1%	18%	5%	42%	0%	32%	2%	52%	2%	46%	47%	10%
John Jay ES	K-2	1%	14%	7%	45%	0%	28%	5%	44%	1%	56%	61%	14%
Robert Frost ES	3-5	1%	13%	7%	49%	0%	26%	3%	39%	2%	59%	60%	13%
Ridge ELC	NA*												
Rupley ES	K-2	4%	3%	2%	38%	0%	50%	3%	49%	3%	48%	52%	12%
Salt Creek ES	3-5	3%	5%	2%	42%	0%	44%	2%	51%	3%	46%	44%	14%
Admiral Byrd ES	K-2	1%	3%	2%	48%	0%	45%	2%	50%	2%	49%	48%	12%
Clearmont ES	3-5	2%	4%	2%	45%	0%	45%	3%	49%	2%	49%	46%	10%
Total		2%	12%	4%	41%	0%	39%	3%	49%	2%	49%	51%	13%

*Ridge serves as an ELC in this model.

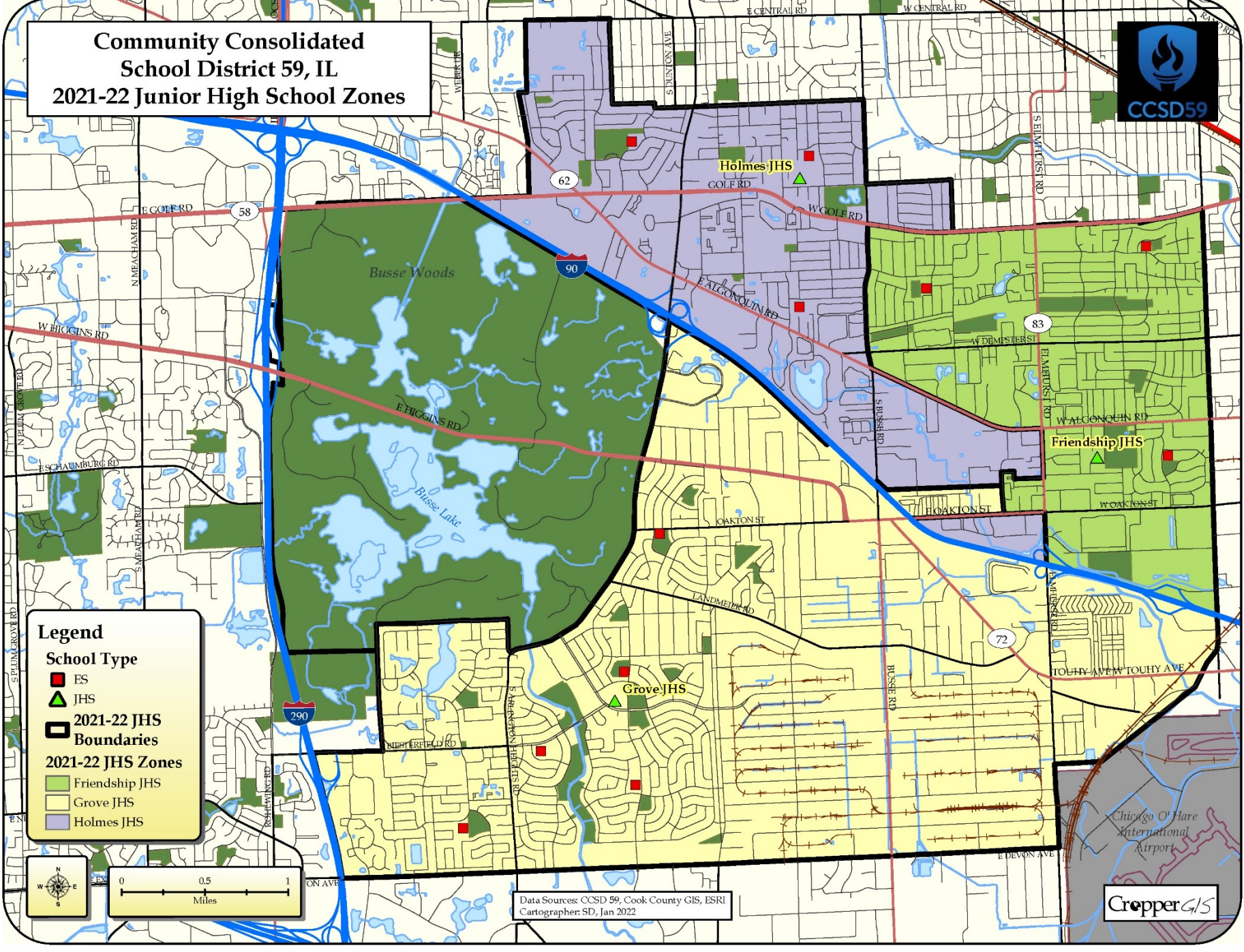
Pairing schools removes all imbalances over 15% and only a few that are over/under 10% of the district averages.



Junior High School: DRAFT Redistricting Option

- Jay ES zone moves into Friendship to maintain an even feeder pattern without over-utilizing Holmes
- Willoway Terrace moved to Holmes JHS from Grove JHS to balance school utilization.

Community Consolidated School District 59, IL 2021-22 Junior High School Zones



Legend

School Type

- ES
- ▲ JHS

2021-22 JHS Boundaries

- ▭ 2021-22 JHS Boundaries

2021-22 JHS Zones

- Friendship JHS
- Grove JHS
- Holmes JHS

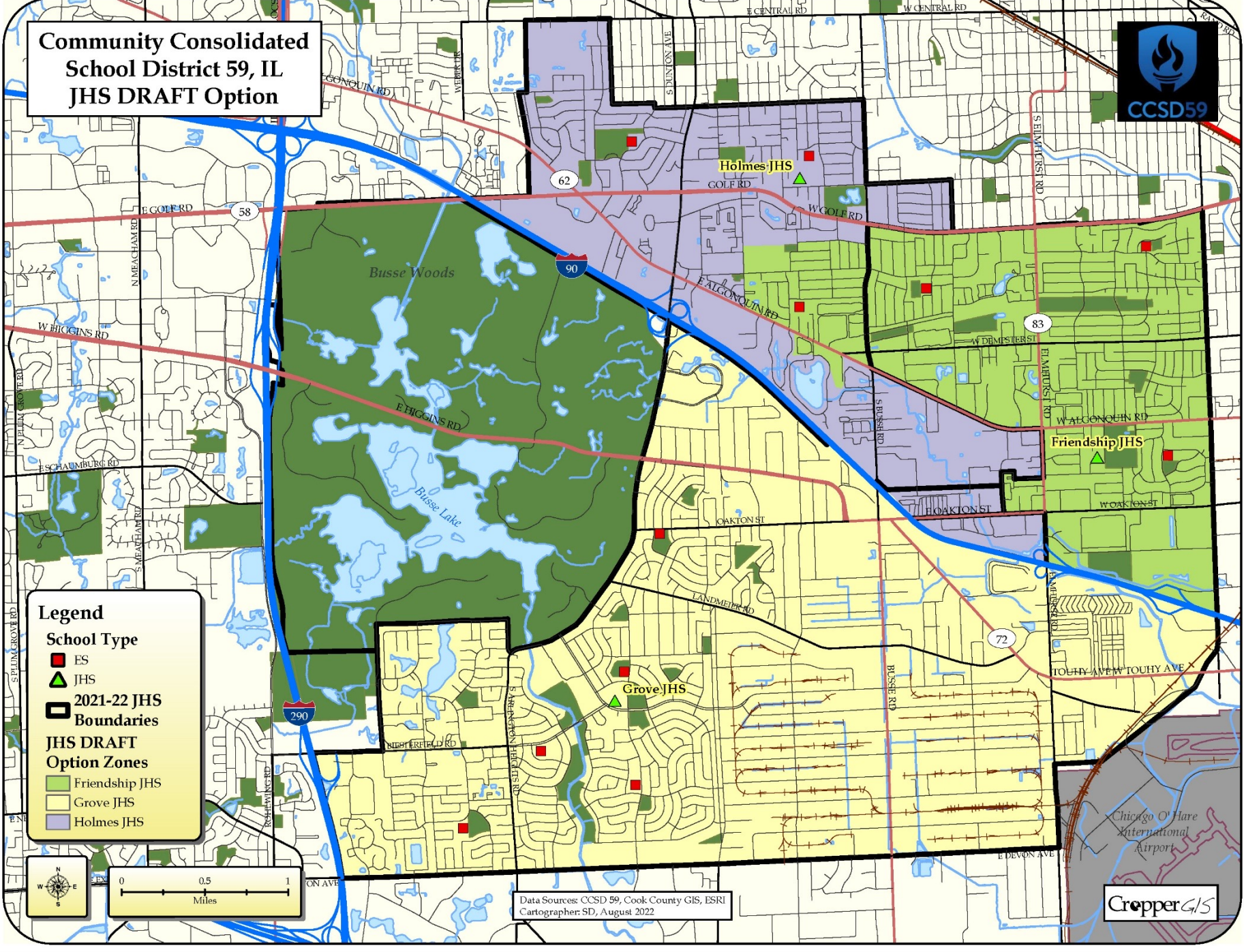


Data Sources: CCSD 59, Cook County GIS, ESRI
Cartographer: SD, Jan 2022



Chicago O'Hare International Airport

Community Consolidated School District 59, IL JHS DRAFT Option



Legend

School Type

- ES
- ▲ JHS

2021-22 JHS Boundaries

JHS DRAFT Option Zones

- Friendship JHS
- Grove JHS
- Holmes JHS



Data Sources: CCSD 59, Cook County GIS, ESRI
Cartographer: SD, August 2022



Chicago O'Hare International Airport



Junior High Schools: DRAFT Option

Within 10%
Between 10-15%
Over/Under 15%

Junior High School	2021-22 Capacity	2021-22 Enrollment and Utilization			JHS DRAFT Option Enrollment and Utilization		
		Current Enrollment	Current Utilization	Trend	Estimated Enrollment	Estimated Utilization	Trend
Friendship JHS	813	618	76%	▼	738	91%	▼
Grove JHS	930	883	95%	▼	814	88%	▼
Holmes JHS	692	452	65%	▼	401	58%	▼
Total	2,435	1,953	80%	▼	1,953	80%	▼

Balance of utilization and minimal number of students impacted.
 Option fits for ES redistricting option and pairing options 1 and 2.



Junior High Schools: DRAFT Option

Within 10%
Between 10-15%
Over/Under 15%

Junior High School	2021-22 Enrollment by Race and Ethnicity							2021-22 Lunch Code			2021-22 Multi-Lingual and Special Ed	
	American Indian or AK Native	Asian	Black	Hispanic / Latino	Native Hawaiian or Other PI	White	Multi-Racial	Paid	Reduced	Free	Multi-Lingual	Special Ed
Friendship JHS	2%	17%	5%	32%	0%	41%	2%	50%	4%	45%	30%	11%
Grove JHS	1%	4%	2%	52%	0%	40%	2%	47%	5%	48%	35%	9%
Holmes JHS	4%	13%	6%	46%	0%	30%	2%	44%	4%	53%	37%	9%
Total	2%	10%	4%	44%	0%	38%	2%	47%	4%	48%	34%	10%

Junior High School	JHS DRAFT Option Race and Ethnicity							JHS DRAFT Option Lunch Code			JHS DRAFT Option M.L. and S.E.	
	American Indian or AK Native	Asian	Black	Hispanic / Latino	Native Hawaiian or Other PI	White	Multi-Racial	Paid	Reduced	Free	Multi-Lingual	Special Ed
Friendship JHS	2%	17%	5%	36%	0%	38%	2%	48%	5%	47%	33%	11%
Grove JHS	1%	4%	2%	50%	0%	42%	2%	49%	5%	47%	31%	8%
Holmes JHS	4%	11%	6%	49%	0%	28%	1%	43%	3%	53%	40%	10%
Total	2%	10%	4%	44%	0%	38%	2%	47%	4%	48%	34%	10%

Minor adjustment has little impact on demographics versus the balance provided to improved utilization.



Small group work

We want to get some input from the EFT on a few concepts/topics.

- Materials and Data:
 - Is there anything you can think of that we haven't explored so far in the process?
 - Thoughts on the scoring methodology / process to evaluate the data?

- Program Considerations:
 - Thoughts on centralized programming versus having program offerings at all schools?
 - Thoughts on potential program considerations for the DRAFT Option?



Online map

- An online map has been developed to further inform all stakeholders on the work of the equity task force.
 - When available/ready, current zones and options will be able to be viewed on the map.
 - Features can be turned on/off on the map.
 - Map is customizable and can/will be updated during the process to show new options along with other information requested by the task force.
 - Site can be viewed on any device, including mobile devices and tablets (with internet connection).
- Site address is:
- www.croppermap.com/ccsd59



**Report back to the group and discuss
next steps**

**Next meeting is
Thursday, September 22nd at 5pm!**