



2022/23 10 Year Facilities Plan Potential Summer Work

Board of Education Meeting
September 12, 2022



COMMUNITY CONSOLIDATED
SCHOOL DISTRICT 59

Work Completed Since July 2020

- Asphalt
- Boilers and Chillers
- Building Automation Systems
- Access Control
- Rooftop Units
- Roofing
- Video Surveillance
- Emergency Lighting
- PA Systems
- Fire Alarm Systems
- Exit Lighting
- Water Fountains
- Vestibules



Phase I (\$12,513,000)

- Asphalt
- HVAC (Boilers, Chillers, Rooftop Units)
- Building Automation Systems
- Roofing



Parking Lot Work



HVAC Work



Phase II (\$21,134,005)

- Asphalt
- HVAC (Boilers, Chillers, Rooftop Units, Univents)
- Building Automation Systems
- Roofing



Roofing



Filters, HVAC, Indoor Air Quality



Univents



Other Work Completed

- Secure Vestibules (\$2,129,561)
- Water Fountains (\$48,000)
- Video Surveillance (\$453,206)
- Exit and Emergency Lighting (\$118,000)
- LED Lighting (\$1,764,447)
- HVAC (\$6,184,000)
- Defunct Sanitary Lines (varies by school)
- PA Systems (\$250,000)
- Friendship Gym (\$450,000 approximate)



Secure Vestibules



Water Fountains



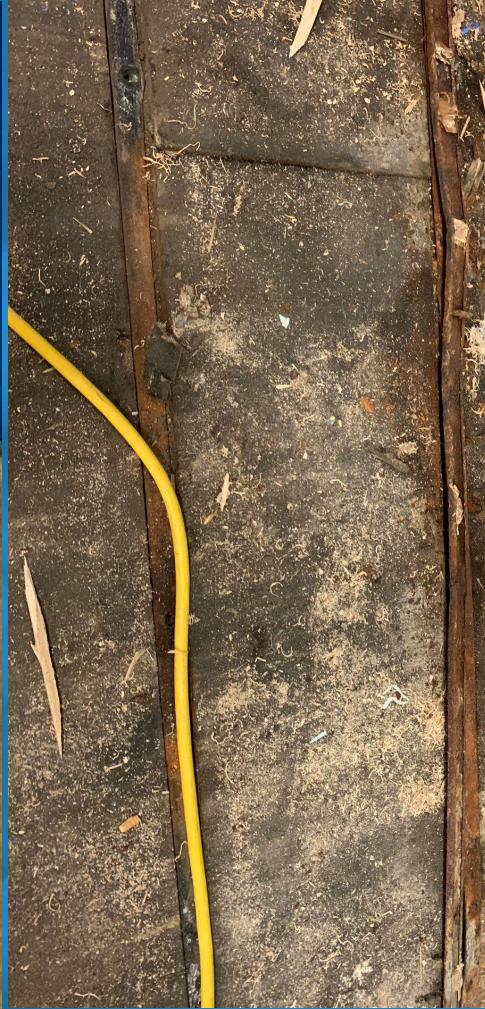
Lighting Project



Sanitary Line Repair



Friendship Gym Before



Friendship Gym (Current)



In Progress

- Juliette Low Retention
- Air Handling Units
- 21st Century Upgrades to Maximize Space for Evolving Educational Needs
 - Gyms
 - LRCs
 - Auditoriums
 - Classrooms



Juliette Low Retention



Building Preparation



Financial Sources

Bond Issuance 2020	\$30,653,715
<u>Local Contribution</u>	<u>\$14,390,504</u>
Total	\$45,044,219



FY23 Planned/Discussed Work

- Seal Coating
- Mill and Overlay at Friendship
- Door and Hardware (Health Life Safety)
- Finish PA System Upgrade
- Sanitary Line Maintenance
- Roofing Overlay (Salt Creek and Frost)
- Windows
- Flooring
- Brentwood Playground

**Projects subject to change based on the outcome of the Equity Journey*



Next Steps

October - Discussion on potential projects and approximate cost

November - Approval to bid on potential projects

December/January - Bring results to the board, with recommendation for approval based on priority



Fund Balance

4:25 Fund Balance Policy - The District shall maintain an aggregate no less than the 50-60% range in the Educational, O&M, Transportation, and Working Cash Funds.

Projected 07/01/22 Fund Balance - \$109,968,997

Budgeted Expenditures for FY23 - \$120,952,410

Current Operating Fund Balance - 91%