

EQUITY JOURNEY: COTW UPDATE

January 30, 2023



COMMUNITY CONSOLIDATED
SCHOOL DISTRICT 59

COTW UPDATE 1/30/23

PURPOSE

Reflection Questions:

- What is it that makes CCSD59 successful?
- What do you believe should be our top priority to address the needs of CCSD59?



AREAS OF FOCUS



Access to Programming
LEARN MORE



Class Sizes
LEARN MORE



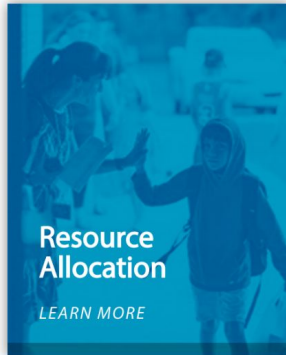
Demographics
LEARN MORE



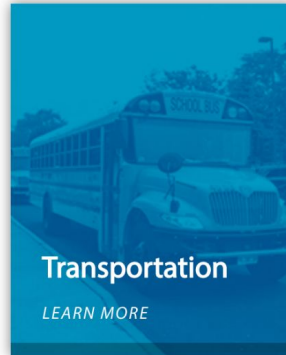
Enrollment
LEARN MORE



Facility and Capacity Usage
LEARN MORE



Resource Allocation
LEARN MORE



Transportation
LEARN MORE



Student Outcomes
LEARN MORE



PLANNING FOR 2023-24



- **KEY DATA POINT:**
 - What is required?
- **FOCUS/KEY QUESTION**
 - What programs exceed requirements?



PLANNING FOR 2023-24

Access to Programming

- Required to provide:
 - Transitional Bilingual Education (TBE) required when there are 20 or more ELs from the same language background in one school. Dual Language is our delivery service model for bilingual education.
 - TPI (ESL) to students designated as English Learners who are not in Dual Language programs



PLANNING FOR 2023-24

Access to Programming

- Not Required to provide:
 - Choice Programs
 - Consolidated (at one school) One-Way Polish Dual Language
 - Two-Way Dual Language
 - School of Choice



Current Status of English Learners (EL) in CCSD59

School	Newcomers 22-23 SY	One-way DL	Two-way DL	ESL	Declined	20+ Language	EL %
Brentwood	36	77	N/O	153	8	Spanish / Russian (20)	50.0%
Byrd	7	168	N/O	N/O	27	Spanish	56.2%
Clearmont	5	146 (Polish)	N/O	52	3	Polish / Spanish (20)	57.7%
Devonshire	9	N/O	N/O	102	4	Spanish / Polish (17)	33.8%
Forest View	24	N/O	N/O	99	5	Spanish	28.2%
Frost	13	142	N/O	59	2	Spanish	60.6%
John Jay	16	50	159	40	2	Spanish	80.4%
Juliette Low	11	N/O	154	42	2	Spanish	71.1%
Ridge	2	N/O	N/O	60	3	Not Applicable	25.3%
Rupley	10	129	N/O	85	2	Spanish	67.4%
Salt Creek	3	93	156	35	4	Spanish	69.7%
Grove	4	175 (Dual Language)		73	18	Spanish	43.4%
Friendship	26	73 (Dual Language)		159	9	Spanish / Polish (19)	41.8%
Holmes	9	117 (Dual Language)		78	9	Spanish	44.2%

N/O = Not Offered at this School



PLANNING FOR 2023-24



- **KEY DATA POINT:**
 - Class size data
- **FOCUS/KEY QUESTION**
 - How do variances in class sizes impact teaching and learning?



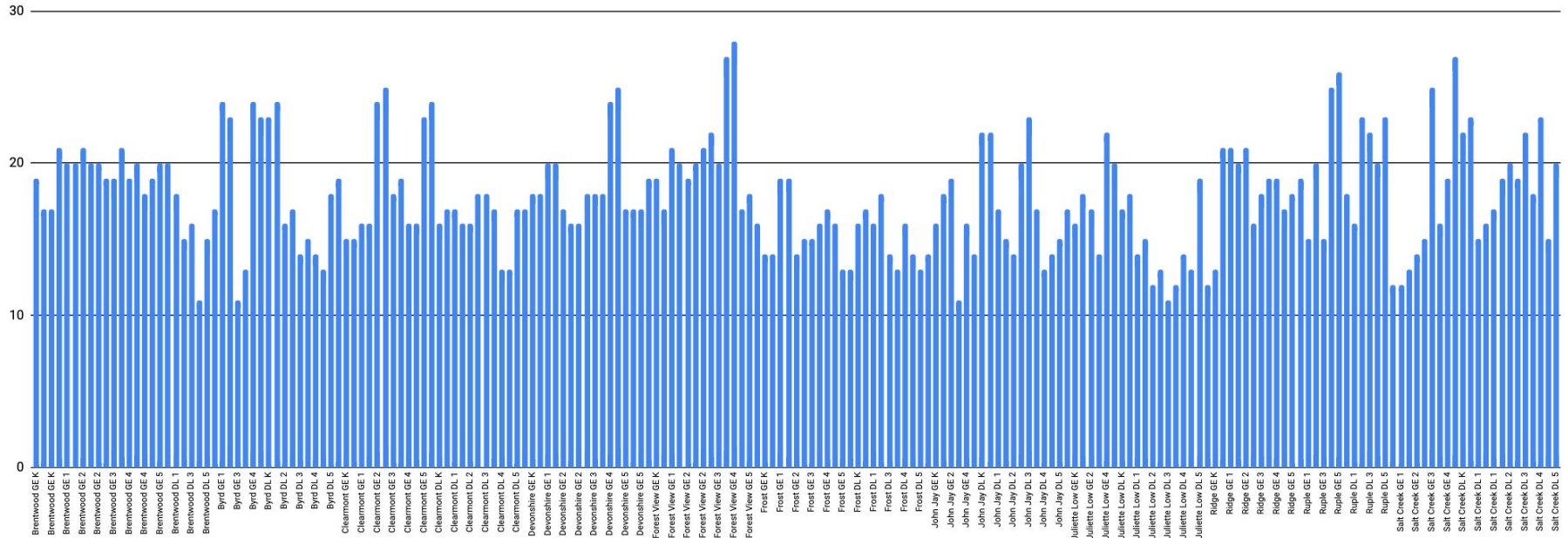
PLANNING FOR 2023-24

- **Variances in class sizes create**
 - Student assignment challenges
 - Instructional group difficulties
 - Unequal teaching conditions
 - Instabilities for stakeholders

- **Focus on balancing class size**

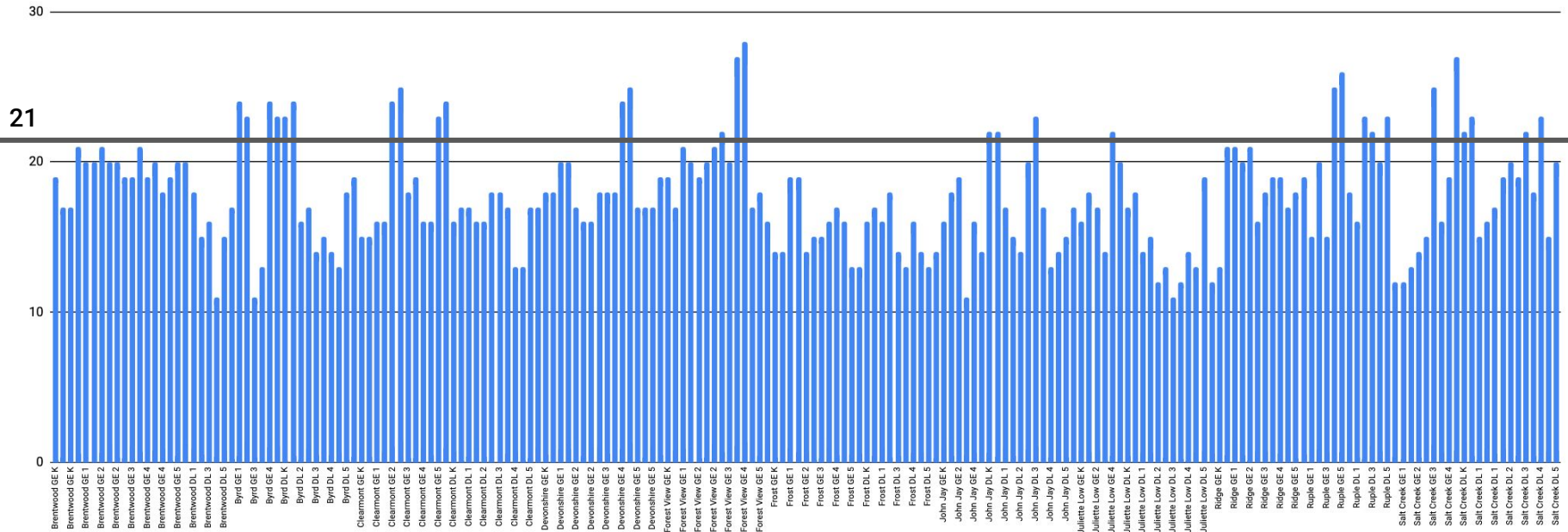


Elementary Class Sizes 2022-23



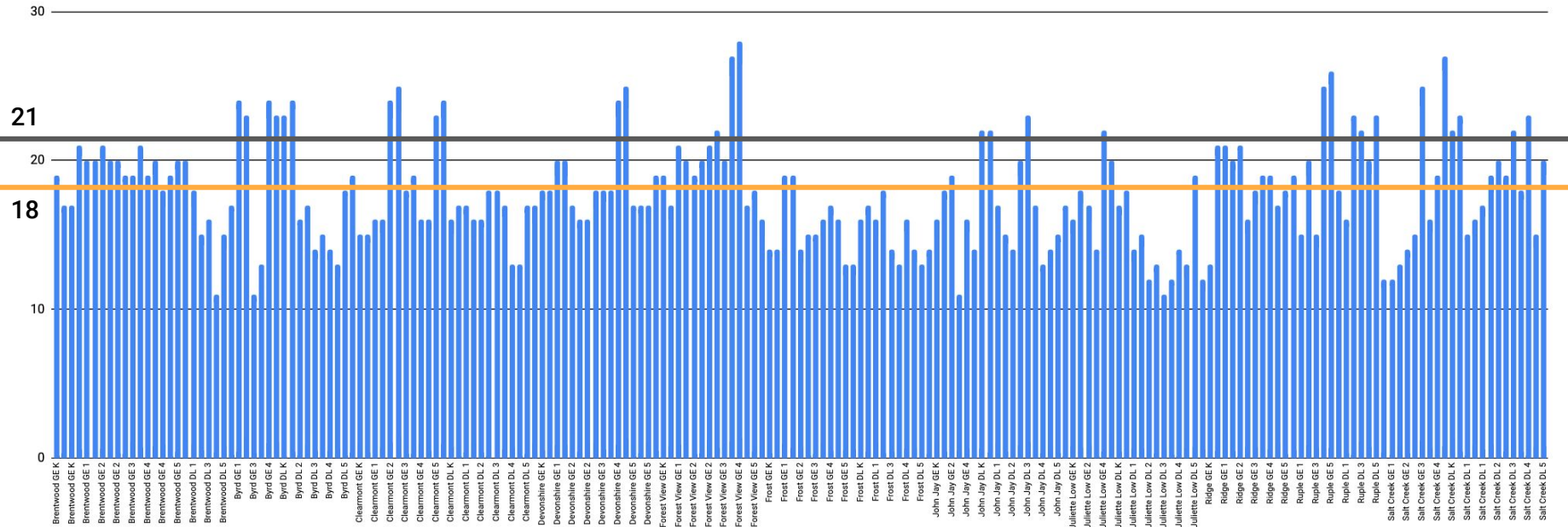
Elementary Class Sizes 2022-23

IL State Average = 21

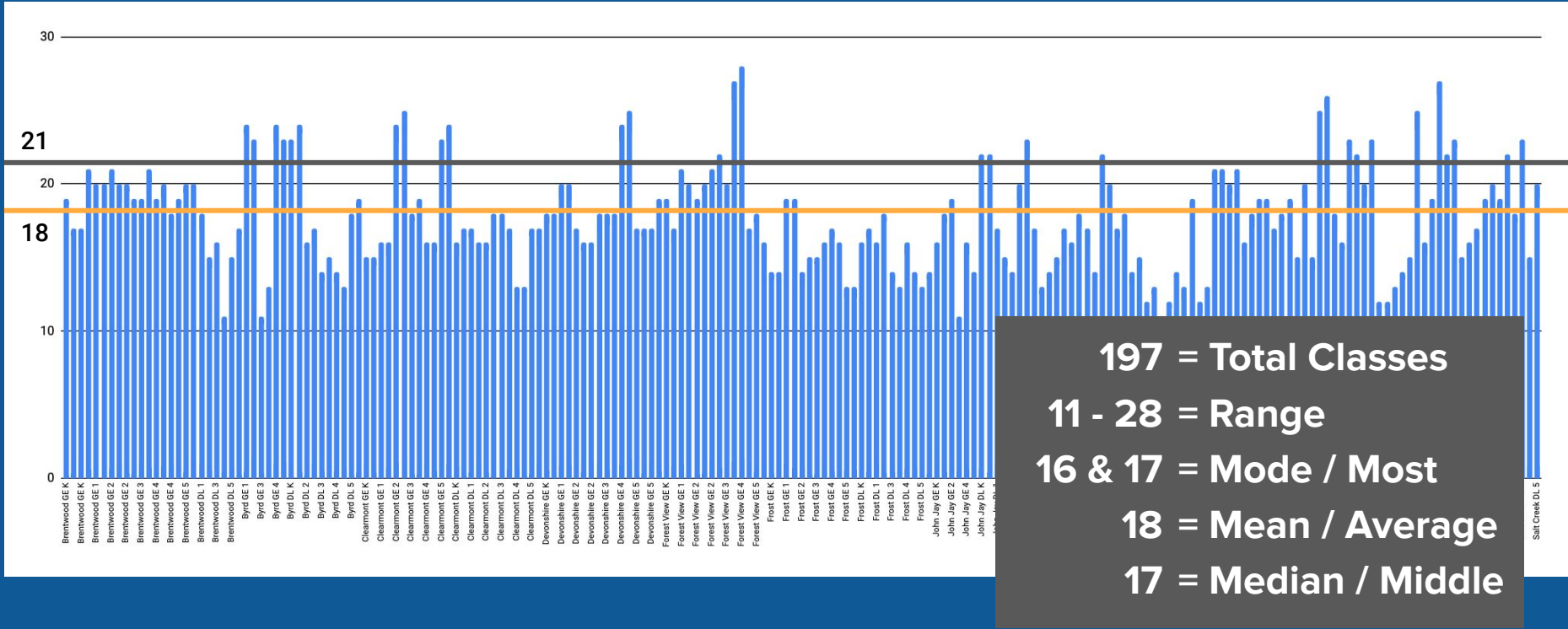


Elementary Class Sizes 2022-23

D59 Average = 18

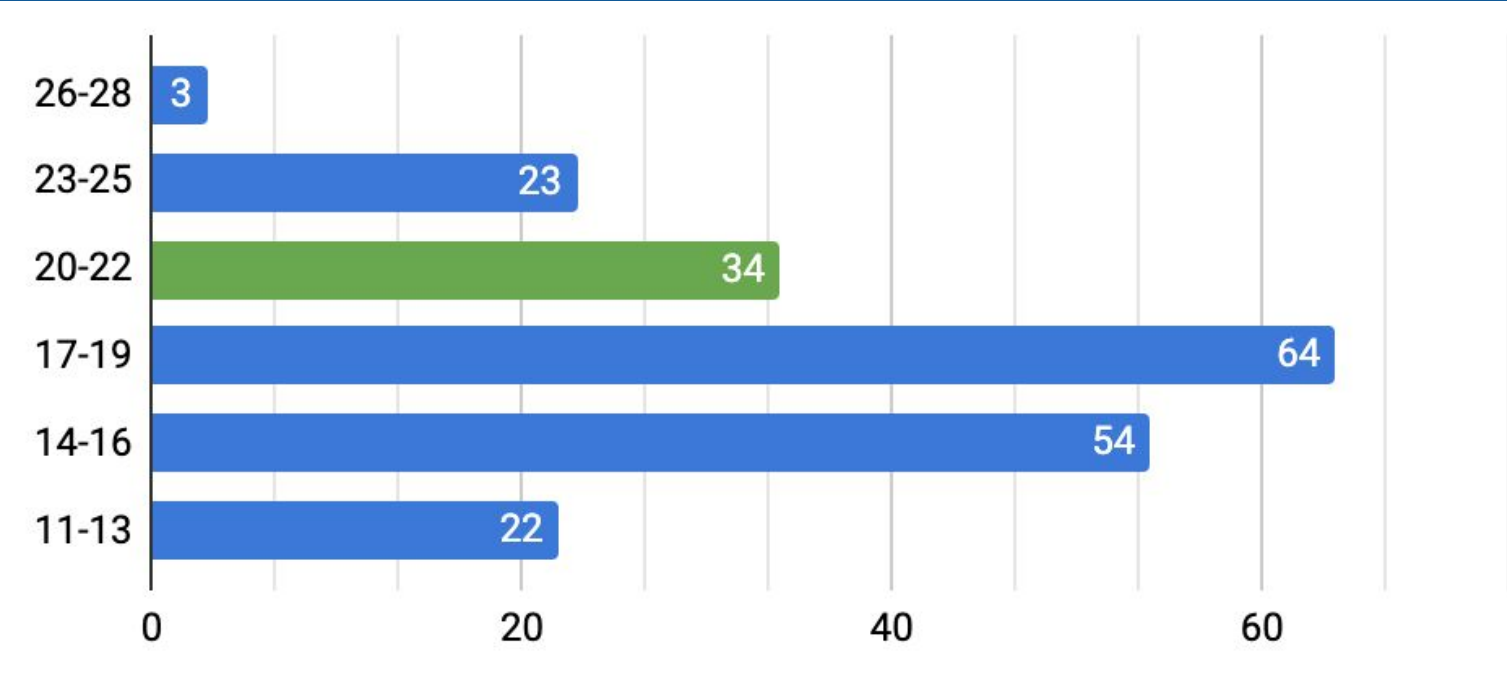


Elementary Class Sizes 2022-23

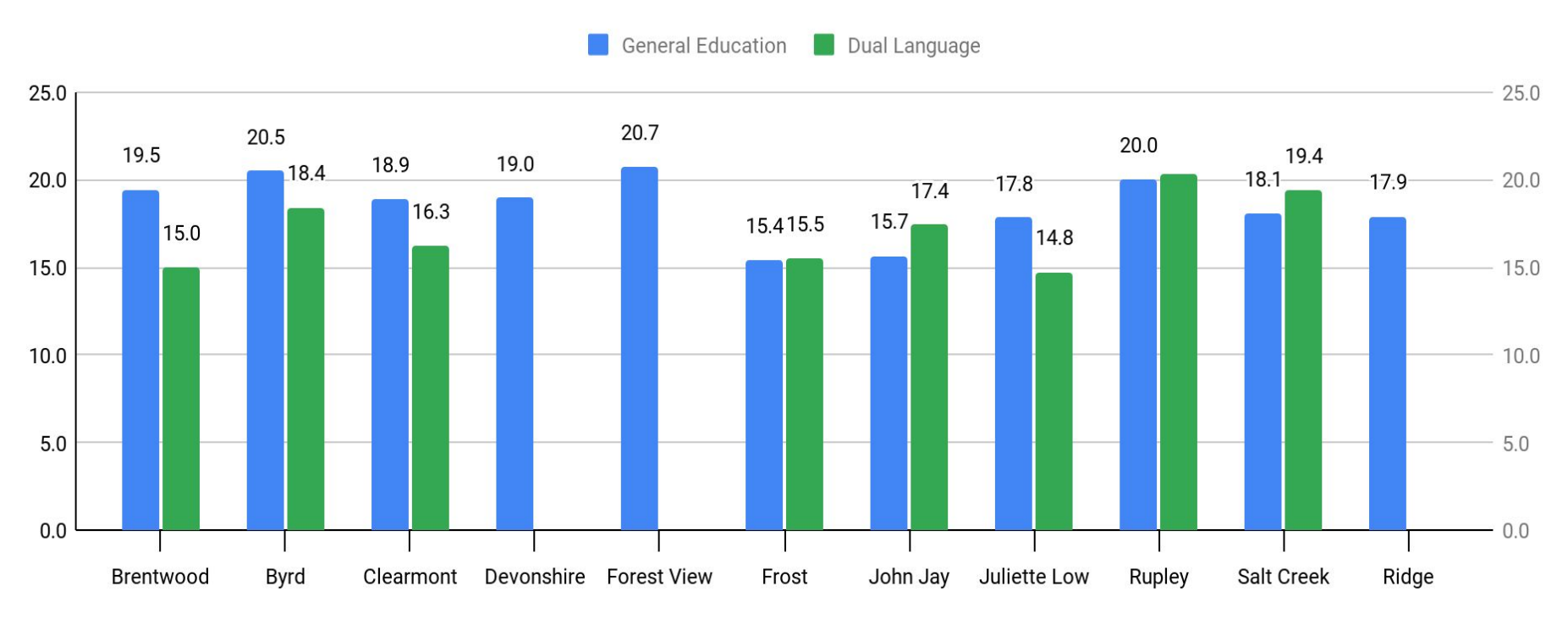


Elementary Class Sizes 2022-23

IL State Average = 21

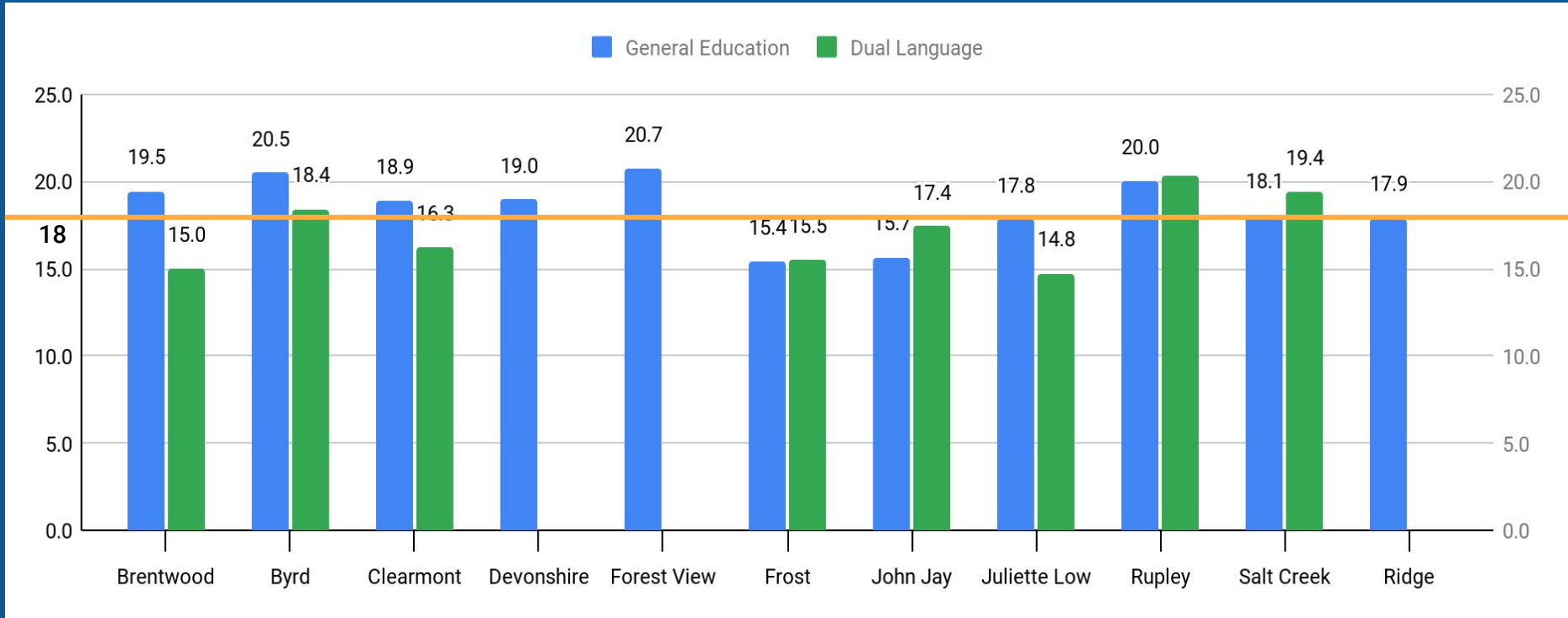


Elementary Class Sizes 2022-23



Elementary Class Sizes 2022-23

D59 Average = 18



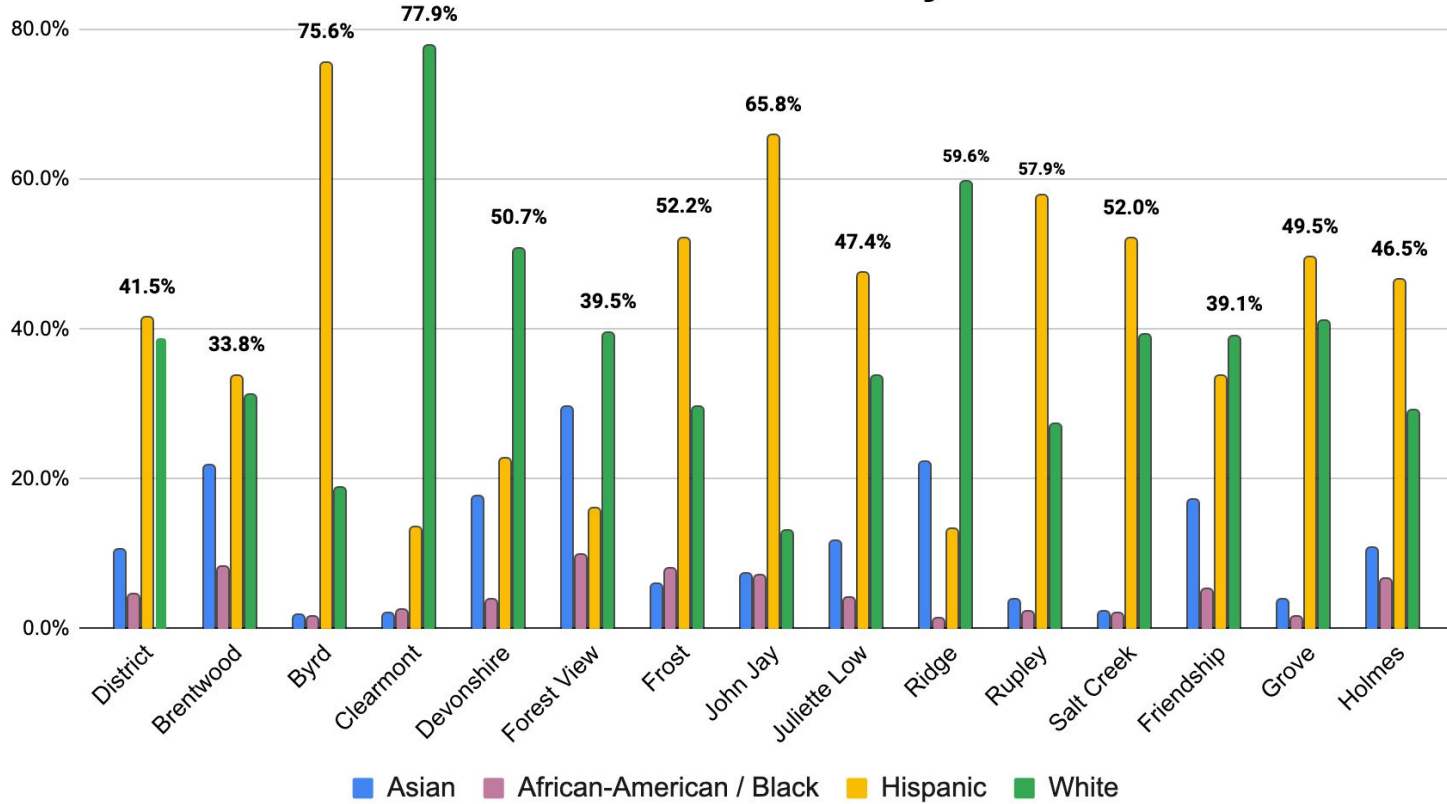
PLANNING FOR 2023-24



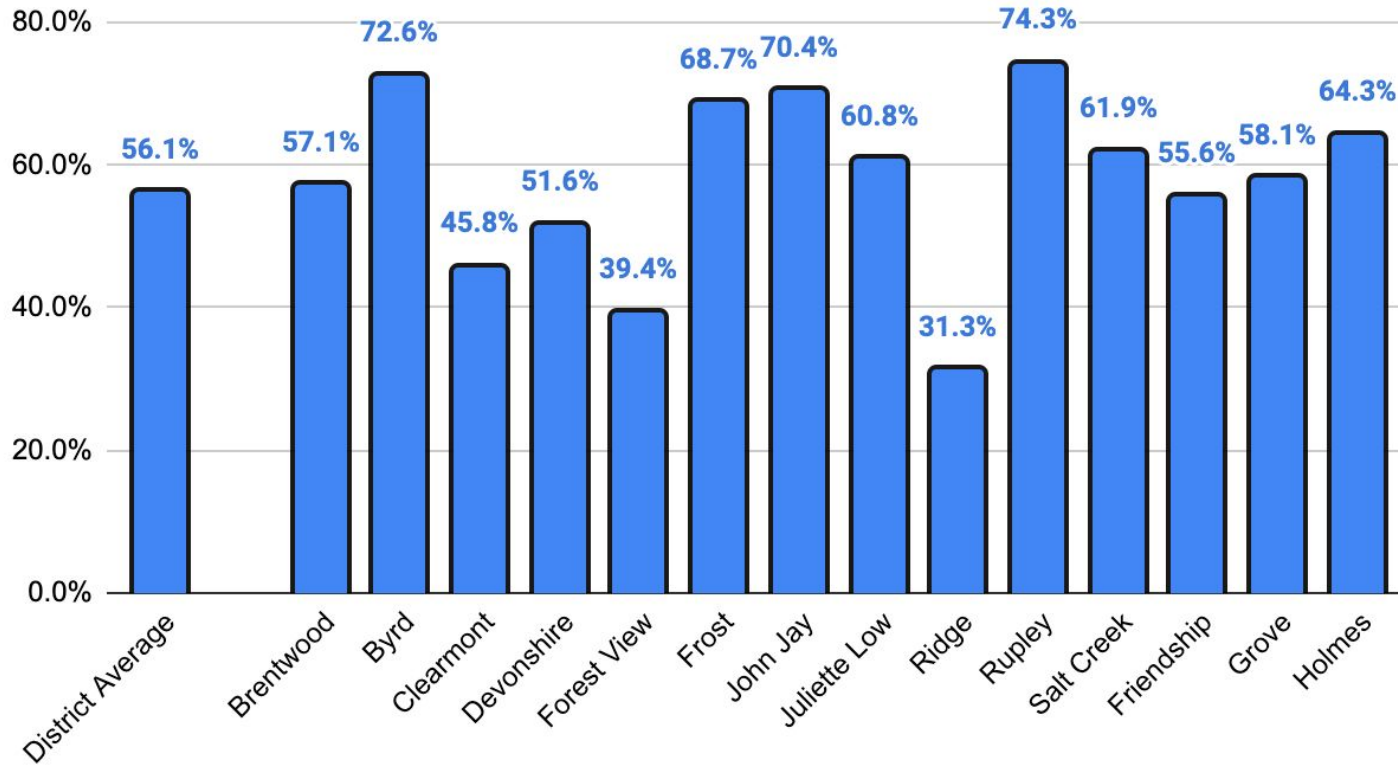
- **KEY DATA POINT:**
 - Current district demographics
- **FOCUS/KEY QUESTION**
 - How can demographic imbalances across schools be addressed?



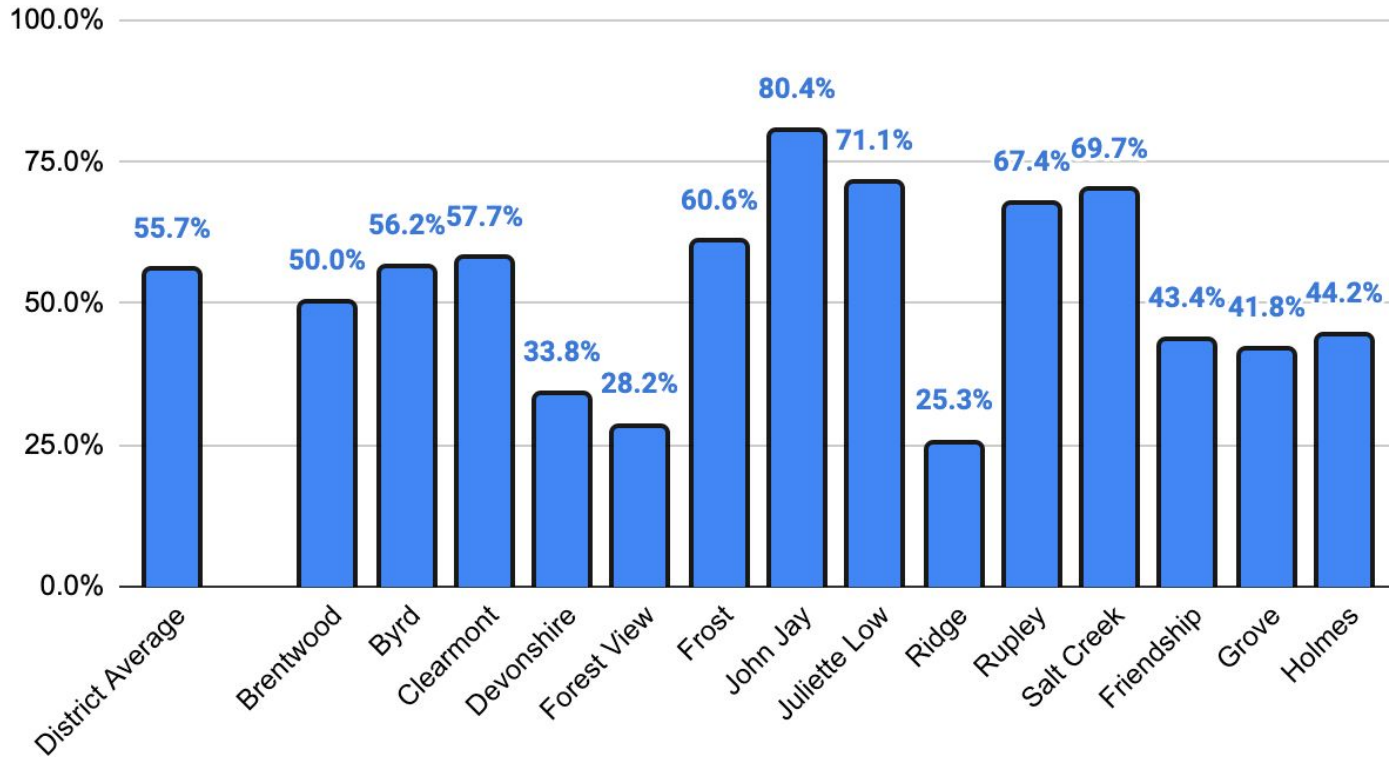
2022.23 Race / Ethnicity %



2022.23 Low Income %



2022.23 Multilingual %



PLANNING FOR 2023-24



- **KEY DATA POINT:**
 - Current enrollment projections
- **FOCUS/KEY QUESTION**
 - What impact does lower enrollment at schools have on teaching and learning?



PLANNING FOR 2023-24

- **Impact of lower enrollment by school**
 - Limits choices for students
 - Teacher assignment changes
 - Creates singleton sections
 - Limits opportunities for diversity and inclusion



PLANNING FOR 2023-24



- **KEY DATA POINT:**
 - Current capacity projections
- **FOCUS/KEY QUESTION**
 - How do we more efficiently utilize our facilities?



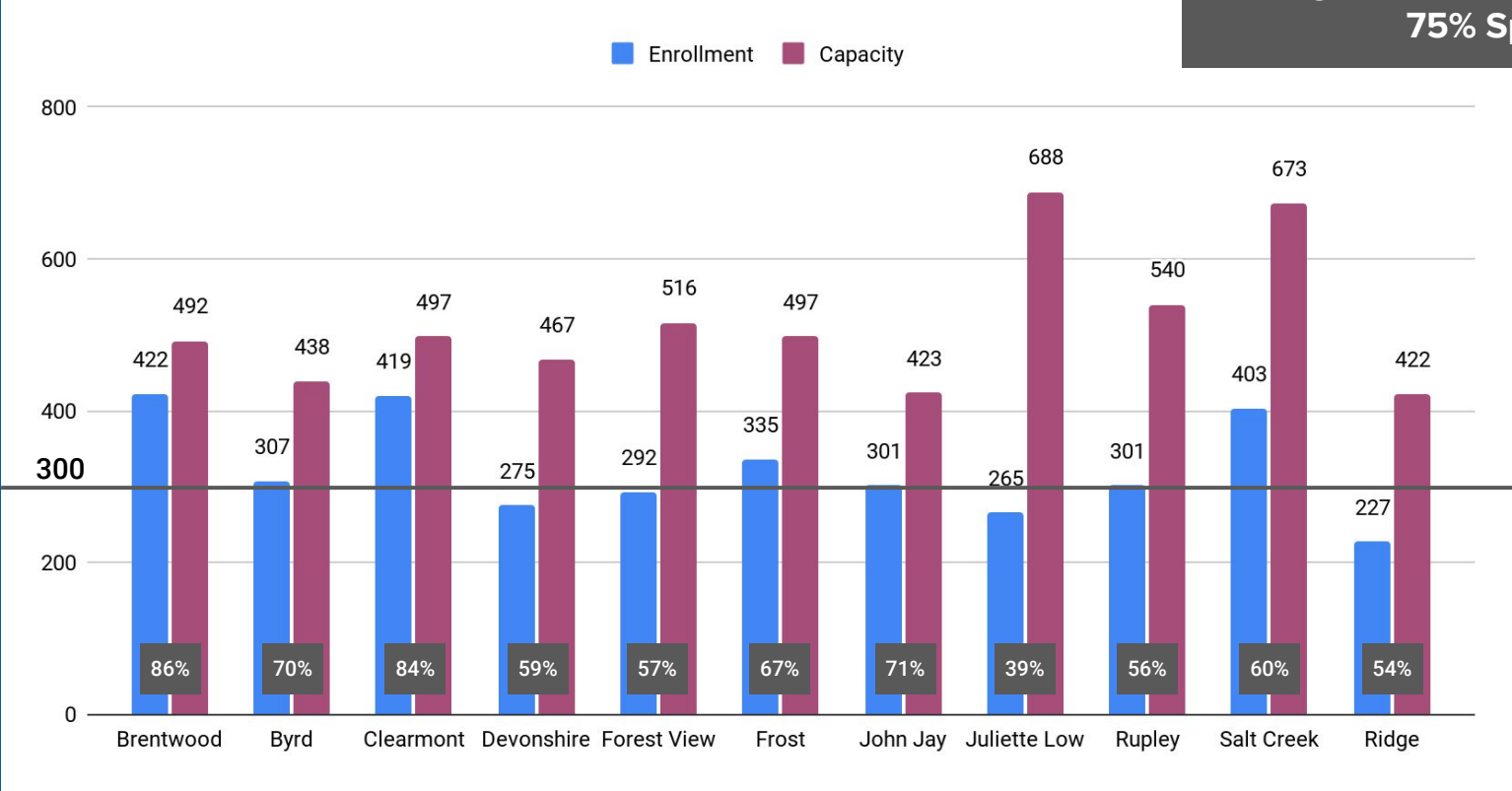
PLANNING FOR 2023-24

- **Impact of inefficient facility utilization**
 - **Increases cost of staffing**
 - **Inefficient school usage and increased costs**
 - **Areas of overcrowding and unused spaces**



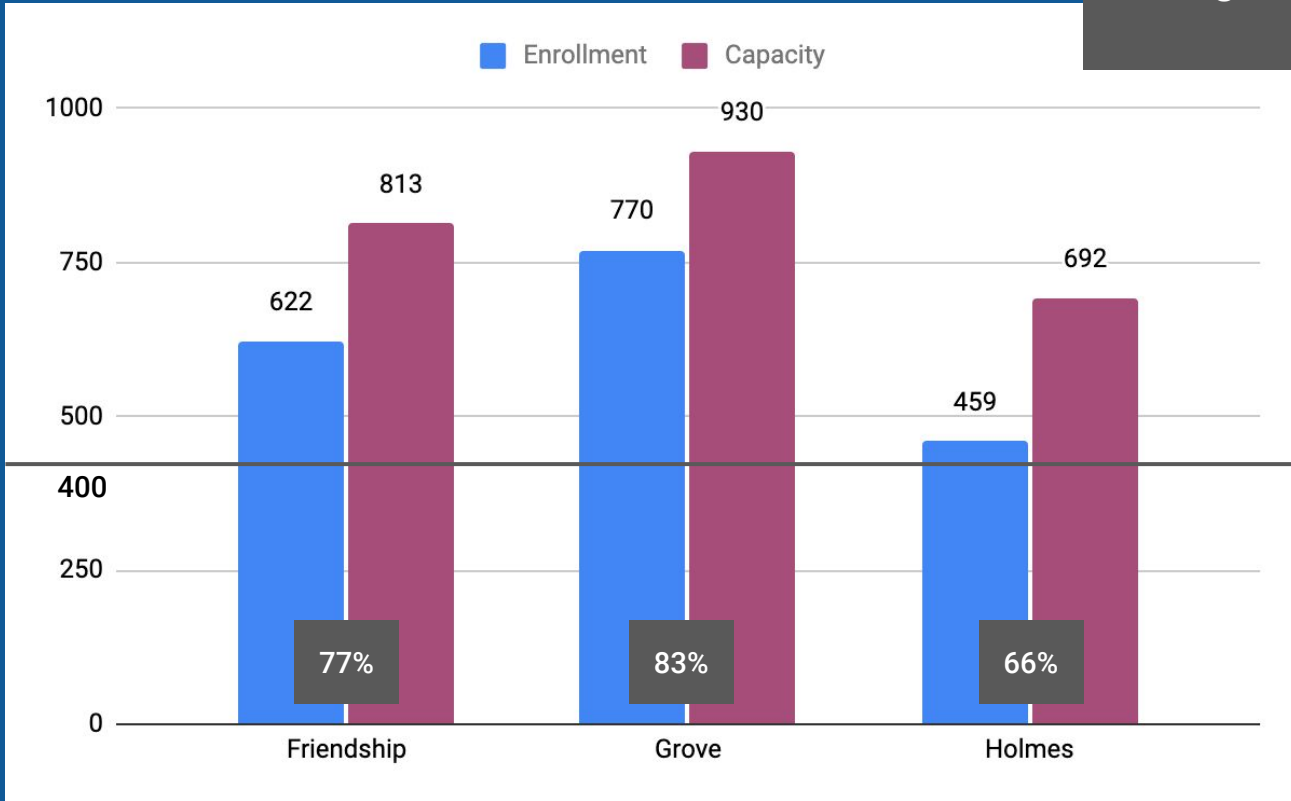
Elementary School Enrollment & Capacity

**EL Target = 300 Students
75% Space**

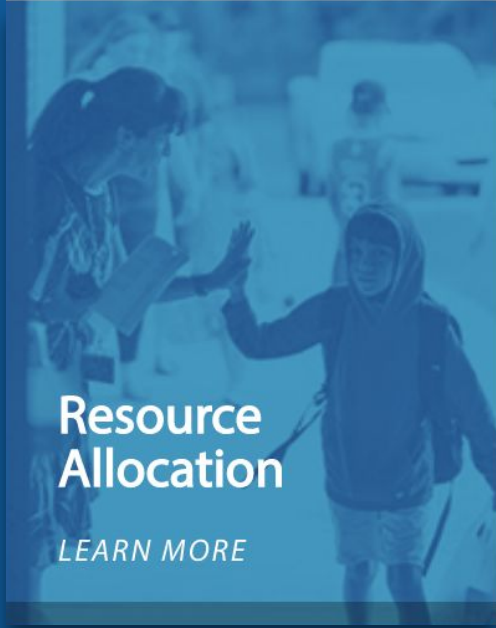


Junior High School Enrollment & Capacity

**JH Target = 400 Students
75% Space**



PLANNING FOR 2023-24



- **KEY DATA POINT:**
 - Per pupil spending & staffing allocations
- **FOCUS/KEY QUESTION**
 - How do we equitably allocate our resources for students and staff?



Singleton Class Sections in Elementary 2022-23

- 42 Singleton Classrooms
- 7 Schools:
 - Brentwood
 - Byrd
 - Frost
 - John Jay
 - Juliette Low
 - Rupley
 - Salt Creek

Grade	General Education	Dual Language
K	5	2
1st	4	4
2nd	4	3
3rd	4	2
4th	4	2
5th	5	3
Totals	26	16



Elementary Class Sizes Compliance 2022-23

- D59 failing to meet compliance
- Bilingual classes shall not exceed 90% of the average class size in general education classes for the same grade in that school

		Class	Ave	Total	90%
K	General Ed. Class	12	12.0	57	
	DL 1-Way Class	22	22.5		183%
	DL 2-Way Class	23			192%

Classrooms Out of Compliance

2 = Byrd
 6 = Clearmont
 6 = Frost
 8 = John Jay
 3 = Juliette Low
 3 = Rupley
 9 = Salt Creek



Elementary Class Sizes Compliance 2022-23

- D59 failing to meet compliance
- Bilingual classes shall not exceed 90% of the average class size in general education classes for the same grade in that school

		Class	Ave	Total	90%
K	General Ed. Class	12	12.0	57	
	DL 1-Way Class	22	22.5		183%
	DL 2-Way Class	23			192%

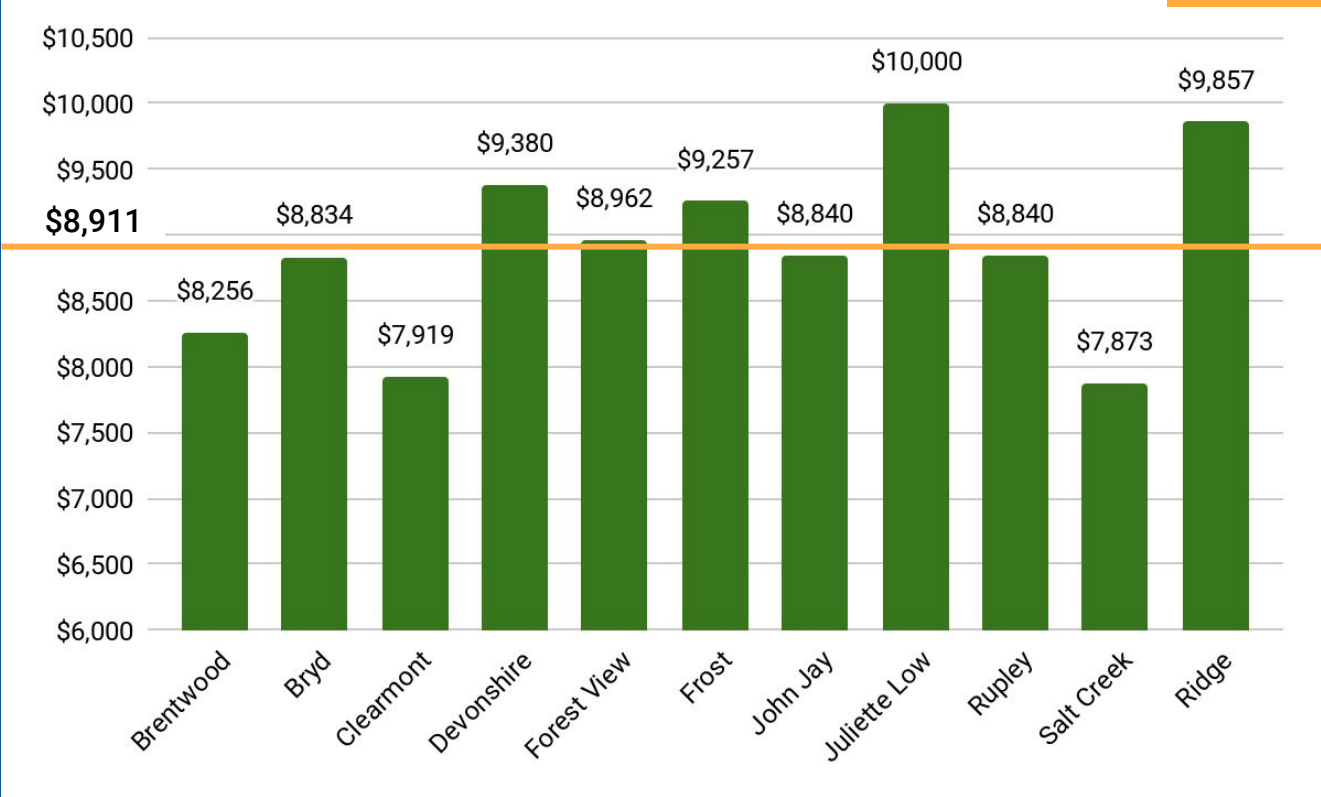
Classrooms Out of Compliance

- 2 = Byrd
- 6 = Clearmont
- 6 = Frost
- 8 = John Jay
- 3 = Juliette Low
- 3 = Rupley
- 9 = Salt Creek



Per Pupil Spending based on Teacher Salary

D59 Average = \$8,911

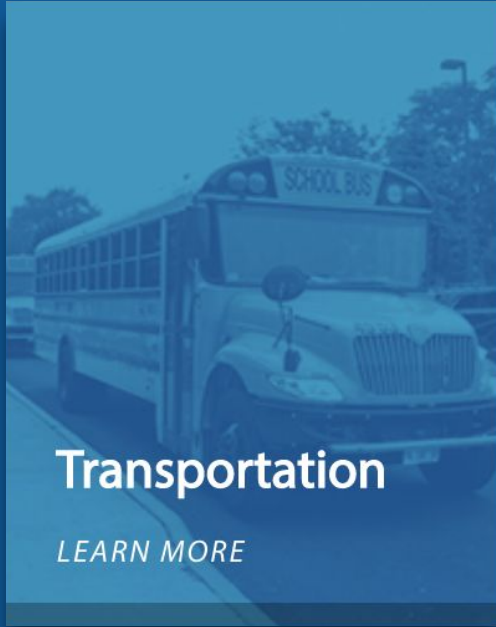


Operating Expenditures Per Pupil

Operating Expenditures Per Pupil as of December 15, 2022			
Schools	Max OEPP	Min OEPP	Difference
15	\$7,476	\$5,618	\$1,858



PLANNING FOR 2023-24



- **KEY DATA POINT:**
 - Transportation route times, costs, and number of routes
- **FOCUS/KEY QUESTION**
 - How do we improve efficiencies and reduce costs?

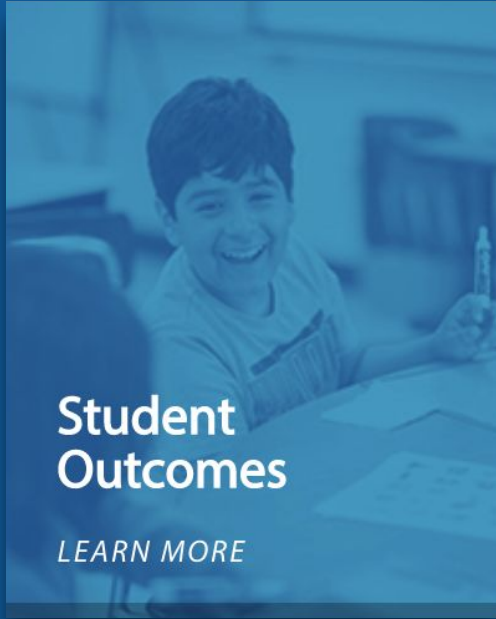


Transportation By the Numbers

Routes	Riders	Average Min/Route	% of Routes Combined
88	3350	30.9	12.60%



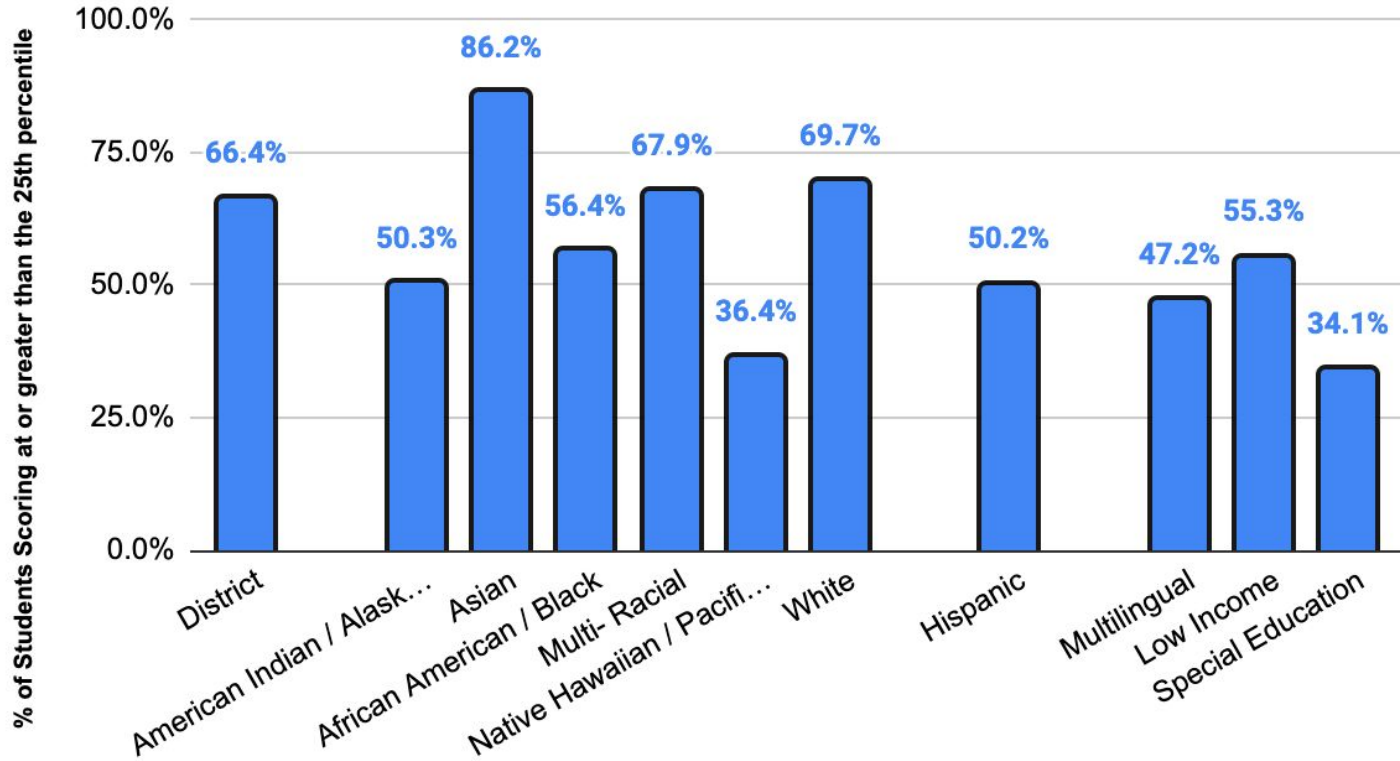
PLANNING FOR 2023-24



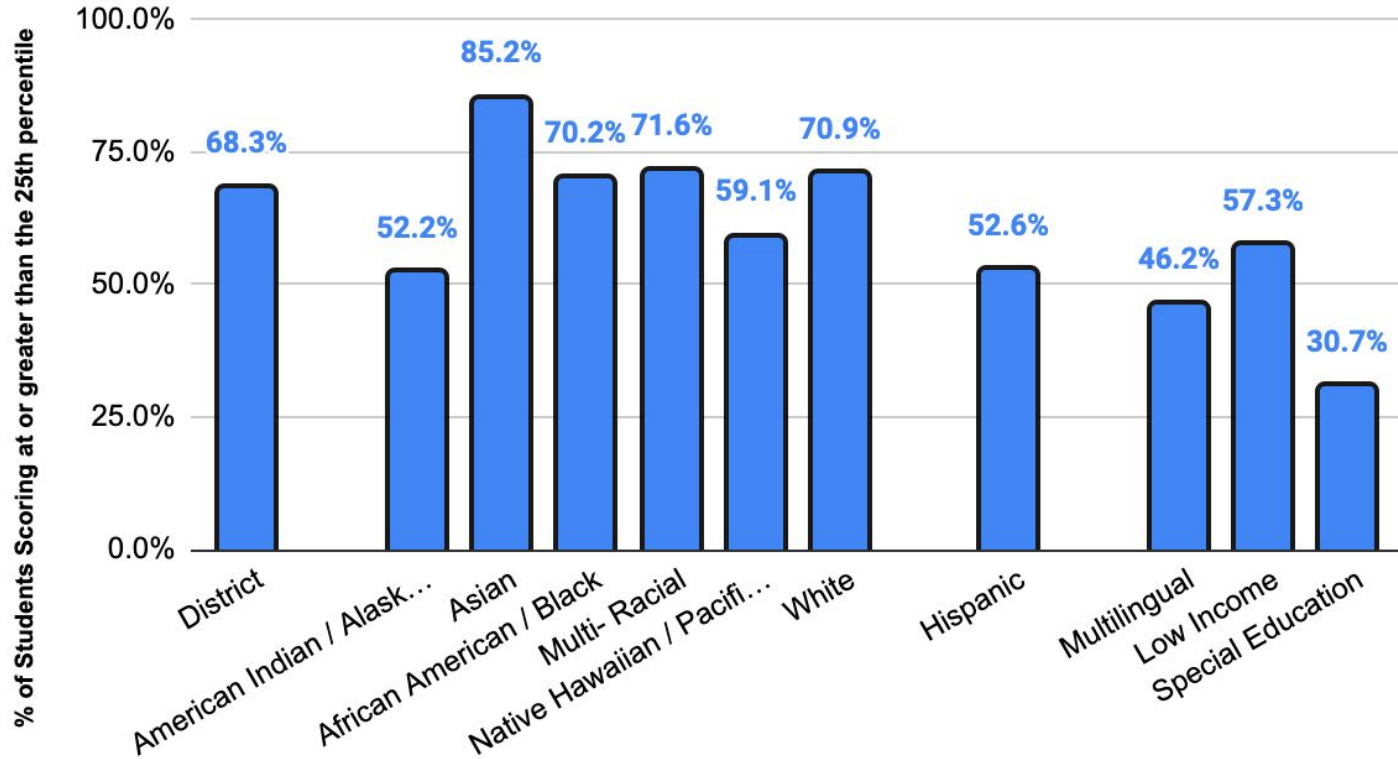
- KEY DATA POINT:
 - Student achievement data
- FOCUS/KEY QUESTION
 - How do we prioritize our work to ensure *all* students across our district meet our KPI goal? (80% of student needs are met in Tier 1, intervention needs met)



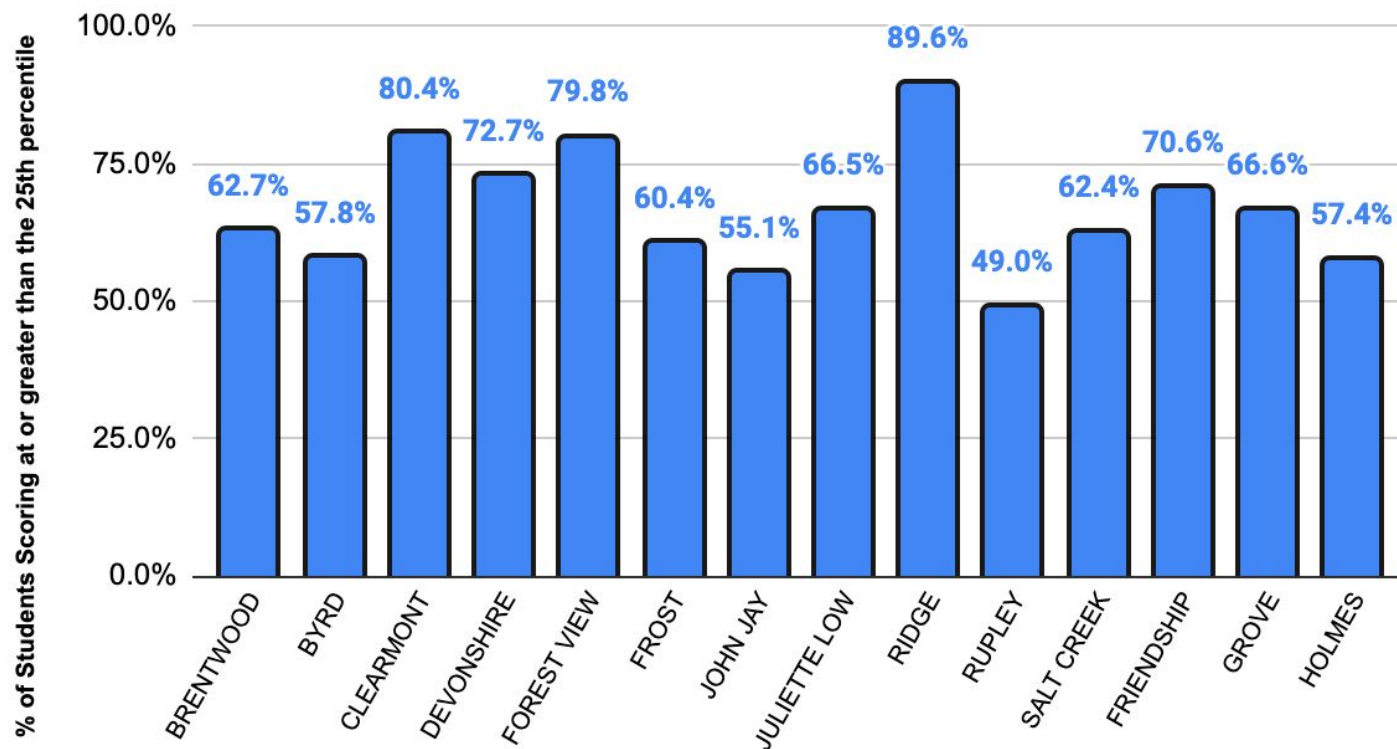
2022.23 Winter Math District Demographic KPI %



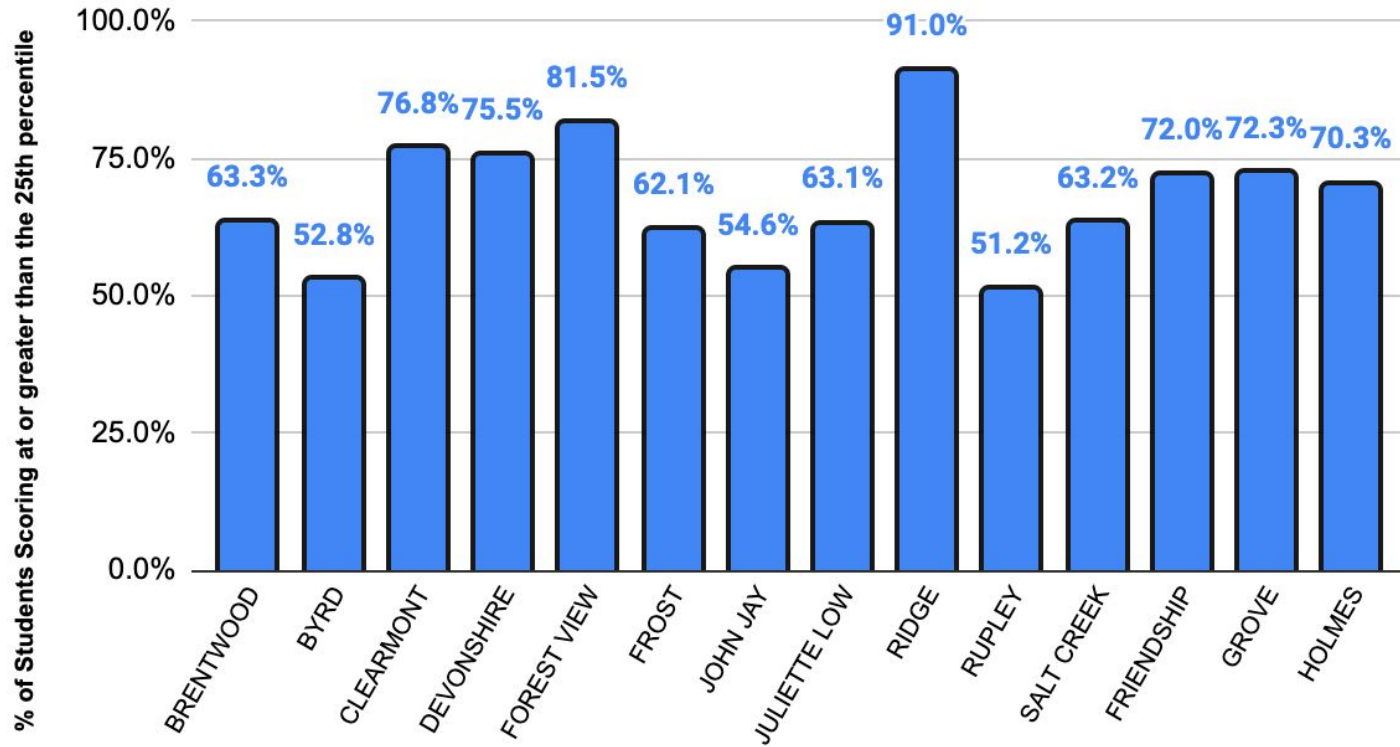
2022.23 Winter Reading District Demographic KPI %



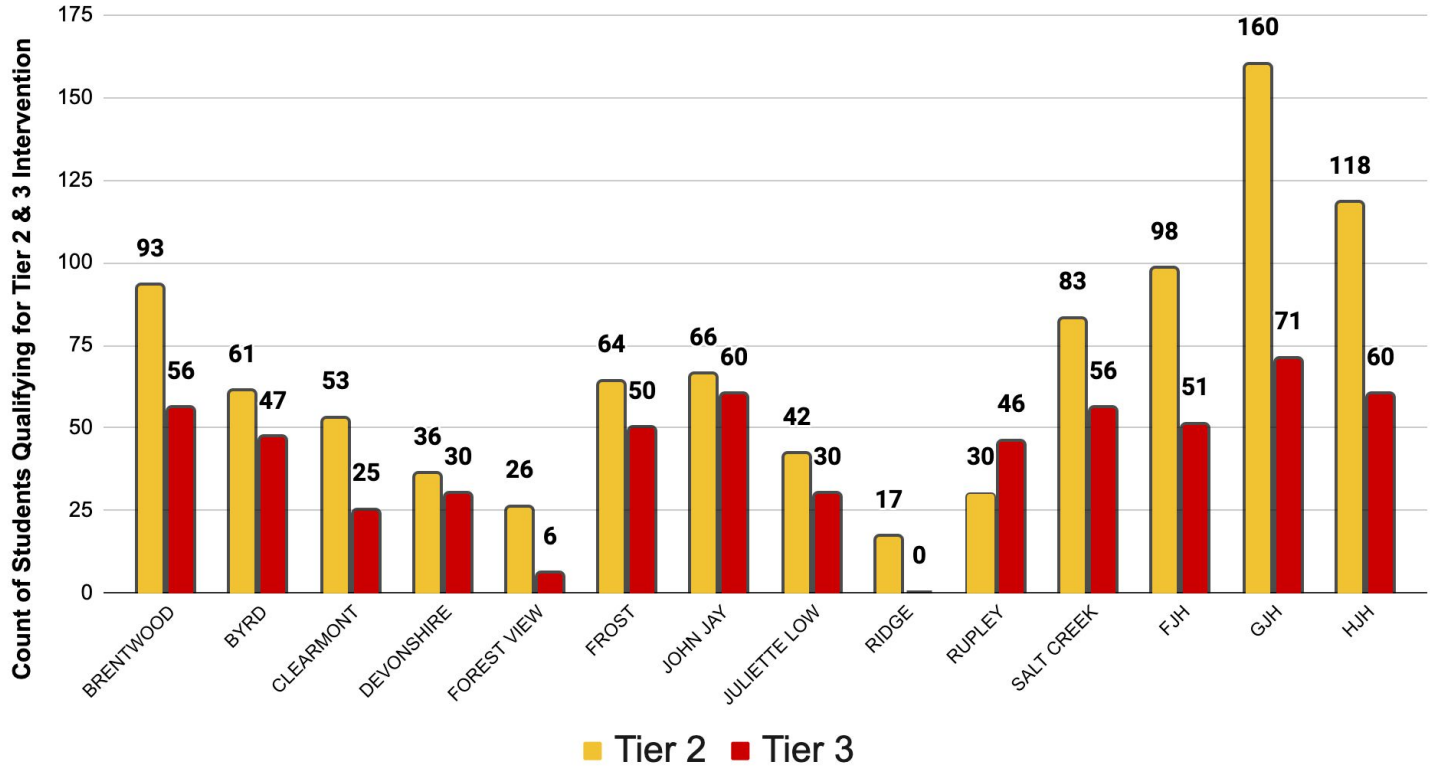
2022.23 Winter Math School KPI %



2022.23 Winter Reading School KPI %



2022.23 Math Winter School Tier 2 & Tier 3 Intervention Needs



Students Served through Intervention

Percent of Students in Need of Intervention who Receive Intervention

	Elementary	Junior High	Overall
Math	61%	48%	52%
Reading	64%	58%	62%



Success of Interventions

Percent of Students Who *Receive Intervention* and Are on Track to *Exceed Typical Growth*

	Elementary	Junior High
Math	64%	71%
Reading	65%	66%



AREAS OF FOCUS

